

Excellent Integrated System Limited

Stocking Distributor

Click to view price, real time Inventory, Delivery & Lifecycle Information:

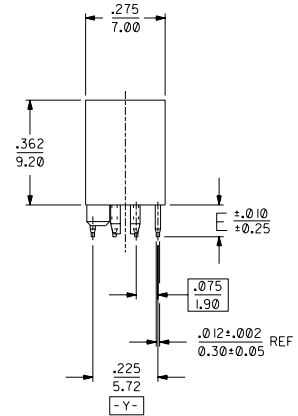
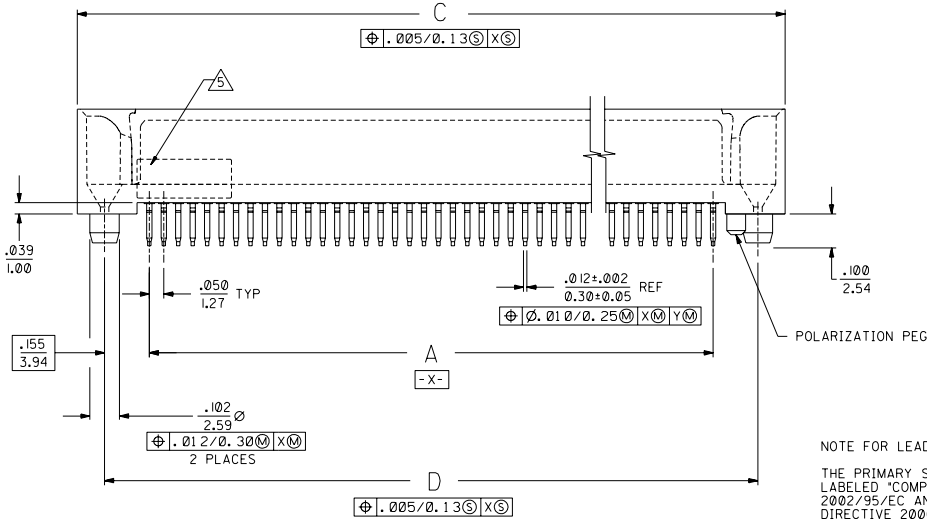
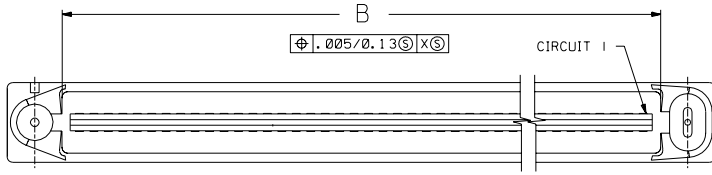
[Molex Connector Corporation](#)
[71661-7068](#)

For any questions, you can email us directly:

sales@integrated-circuit.com

NOTES:

- 1) MATERIALS:
HOUSING - LIQUID CRYSTAL POLYMER (LCP), GLASS FILLED, UL94V-0, COLOR: BLACK
TERMINALS - COPPER ALLOY
- 2) TERMINAL FINISH:
30 MICROINCH/0.76 MICROMETER MINIMUM GOLD IN CONTACT AREA AND 50 MICROINCH/L27 MICROMETER MINIMUM TIN IN TAIL AREA OVER NICKEL UNDERPLATE OVERALL.
- 3) ASSEMBLY MATES WITH MOLEX PART NUMBER 71660-7***. CONFORMS TO PRODUCT SPECIFICATION PS-71660.
- 4) RECOMMENDED P.C. BOARD THICKNESS IS .062/1.6 MILLIMETER.
- 5) FOUR DIGIT DATE CODE TO BE LOCATED ON SURFACE AS SHOWN.
- 6) PRODUCT PACKAGED PER SPECIFICATION PK-71660.



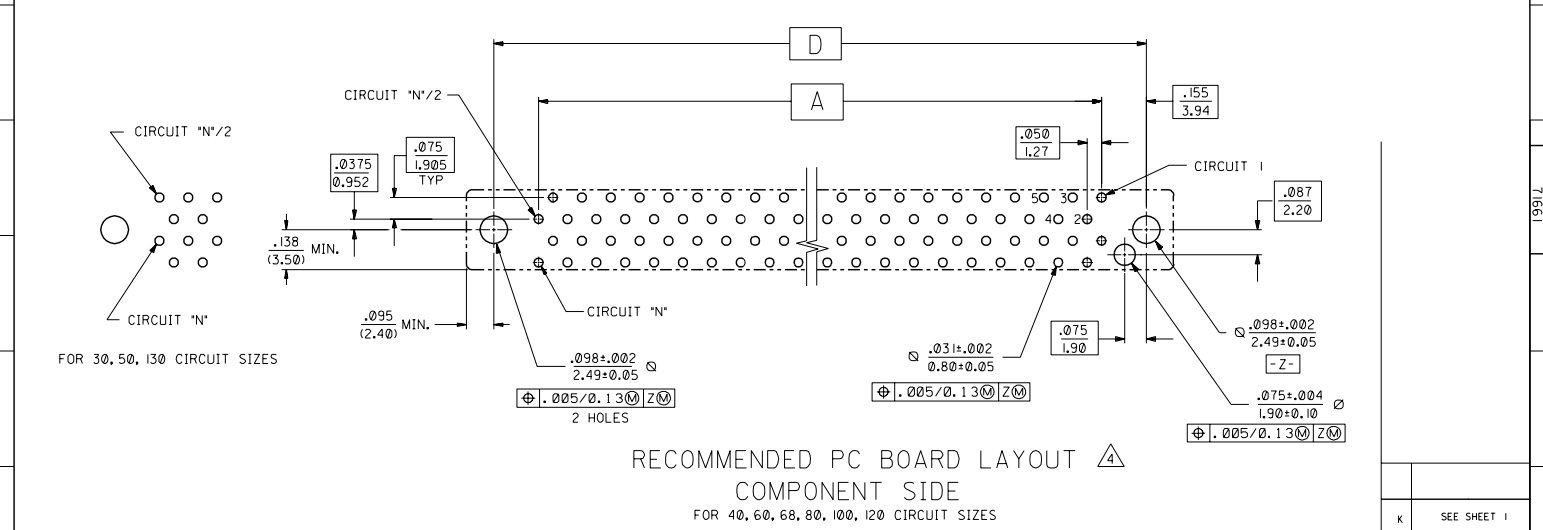
NOTE FOR LEAD FREE CONVERSION:

THE PRIMARY SHIPPING CARTON WILL BE LABELED "COMPLIANT TO ROHS DIRECTIVE 2002/95/EC AND ELV ANNEX II OF DIRECTIVE 2000/53/EC". CARTONS WITHOUT THIS LABEL MAY CONTAIN PRODUCT WITH LEAD.

L	LEAD FREE CONV ECN UCP2004-2096 RKADAMS 04/04/26
K	REVISOR PER ECN U71314 ACHAMMER 97-4-28
J	REVISOR PER ECN U70133 ACHAMMER 96-8-7
I	REVISOR PER ECN U51477 7-3-96 DGA
H	REVISOR PER ECN U51278 5-2-96 DGA
G	REVISOR PER ECN U60641 11-28-95 DMS
F	REVISOR PER ECN U60564 11-8-95 RAN
E	REVISOR PER ECN U50229 9-23-94 RAN
D	REVISOR PER ECN U50990 8-30-94 RAN
C	REVISOR PER ECN U40506 4-15-94 RAN
B	REVISOR PER ECN U40305 3-4-94 RAN
A	INITIAL RELEASE PER ECN U31632 12-15-93 RAN
I	PRELIMINARY 11-17-93 RAN
L	REV. LTR.
K	REV. LTR.
J	REV. LTR.
I	REV. LTR.
H	REV. LTR.
G	REV. LTR.
F	REV. LTR.
E	REV. LTR.
D	REV. LTR.
C	REV. LTR.
B	REV. LTR.
A	REV. LTR.

DIMENSIONS SHOWN (METRIC) INCH UNLESS OTHERWISE SPECIFIED TOLERANCES: MILLIMETER ± 0.25		TITLE REVISIONS	
± PLAGE ± .005	---	1	1
± PLAGE ± .01	±	2	2
± PLAGE ---	±	3	3
DRAFT WHEN DIMENSIONS MUST REMAIN WITHIN DIMENSIONS		REVISIONS	
DRG: RAN	CHK'D: RAN	MFG. SH. REV. LTR.	
BY: CAB	SCALE: 4:1	REV. LTR.	
PART NO. SDA-71661-7***		REVISIONS	
FILE NAME: ST/661X7		REV. LTR.	
SHEET NO. 1 OF 2		REV. LTR.	
DATE: 11/17/93		REV. LTR.	
MOLEX INCORPORATED		REV. LTR.	
USA		REV. LTR.	
SEE TABLE		REV. LTR.	
THIS DRAWING CONTAINS INFORMATION THAT IS PROPRIETARY TO MOLEX INC. AND SHOULD NOT BE USED WITHOUT WRITTEN PERMISSION.		REV. LTR.	

ITEM NUMBER	CKT. ('N')	A	B	C	D	E
71661-7030	30	.700 (17.78)	.820 (20.83)	1.199 (30.45)	1.010 (25.65)	.110 (2.79)
71661-7040	40	.950 (24.13)	1.070 (27.18)	1.449 (36.80)	1.260 (32.00)	
71661-7050	50	1.200 (30.48)	1.320 (33.53)	1.699 (43.15)	1.510 (38.35)	
71661-7060	60	1.450 (36.83)	1.570 (39.88)	1.949 (49.50)	1.760 (44.70)	
71661-7068	68	1.650 (41.91)	1.770 (44.96)	2.149 (54.58)	1.960 (49.78)	
71661-7080	80	1.950 (49.53)	2.070 (52.58)	2.449 (62.20)	2.260 (57.40)	
71661-7100	100	2.450 (62.23)	2.570 (65.28)	2.949 (74.90)	2.760 (70.10)	
71661-7120	120	2.950 (74.93)	3.070 (77.98)	3.449 (87.60)	3.260 (82.80)	
71661-7130	130	3.200 (81.28)	3.320 (84.33)	3.699 (93.95)	3.510 (89.15)	
71661-7230	30	.700 (17.78)	.820 (20.83)	1.199 (30.45)	1.010 (25.65)	.134 (3.40)
71661-7240	40	.950 (24.13)	1.070 (27.18)	1.449 (36.80)	1.260 (32.00)	
71661-7250	50	1.200 (30.48)	1.320 (33.53)	1.699 (43.15)	1.510 (38.35)	
71661-7260	60	1.450 (36.83)	1.570 (39.88)	1.949 (49.50)	1.760 (44.70)	
71661-7268	68	1.650 (41.91)	1.770 (44.96)	2.149 (54.58)	1.960 (49.78)	
71661-7280	80	1.950 (49.53)	2.070 (52.58)	2.449 (62.20)	2.260 (57.40)	
71661-7300	100	2.450 (62.23)	2.570 (65.28)	2.949 (74.90)	2.760 (70.10)	
71661-7320	120	2.950 (74.93)	3.070 (77.98)	3.449 (87.60)	3.260 (82.80)	
71661-7330	130	3.200 (81.28)	3.320 (84.33)	3.699 (93.95)	3.510 (89.15)	



RECOMMENDED PC BOARD LAYOUT COMPONENT SIDE
 FOR 40, 60, 68, 80, 100, 120 CIRCUIT SIZES

MFG. SH.	REV.	LTR.	REVISIONS
			SEE SHEET 1
DIMENSIONS SHOWN IN METRIC/INCH UNLESS OTHERWISE SPECIFIED TOLERANCES ANGULAR ± 1/2°			
TITLE: SALES ASSEMBLY EBBI 50D, VERTICAL PLUG BLIND MATE CONNECTOR			
DRAWN: RAN CHECKED: RAN APPROVED: CAB			
MOLEX INCORPORATED DATE: 11/17/93 SHEET: 2			
PART NO.: SEE TABLE DRAWING NO.: SDA-71661-7			
NOTE: DIMENSIONS CONTAINING INFORMATION THAT IS PROPRIETARY TO MOLEX INC. AND SHOULD NOT BE USED WITHOUT WRITTEN PERMISSION.			