

## Excellent Integrated System Limited

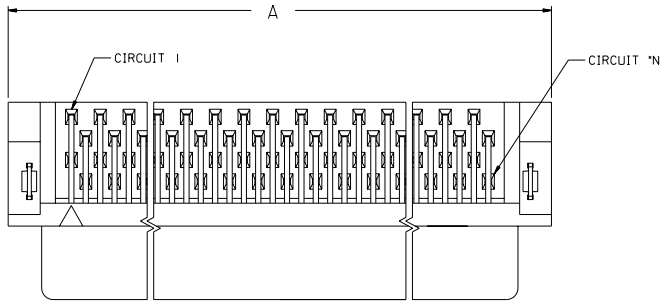
Stocking Distributor

Click to view price, real time Inventory, Delivery & Lifecycle Information:

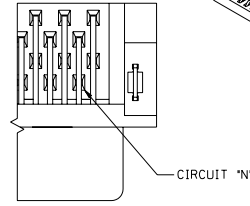
[Molex Connector Corporation](#)  
[87552-0681](#)

For any questions, you can email us directly:

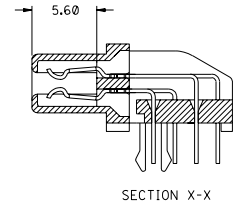
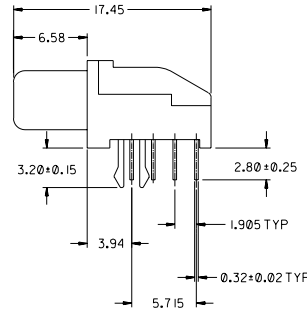
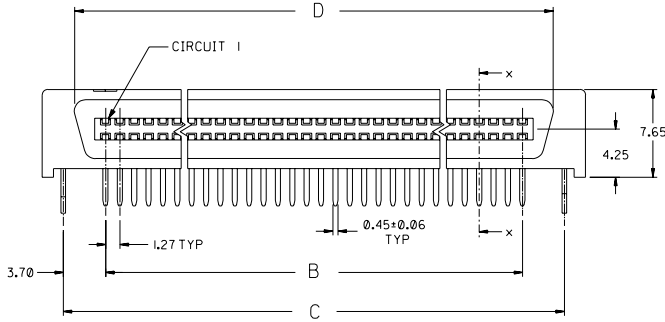
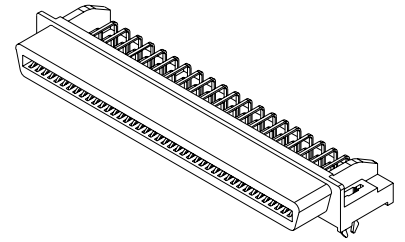
[sales@integrated-circuit.com](mailto:sales@integrated-circuit.com)



FOR CIRCUIT SIZES 68 AND 80 ONLY



FOR CIRCUIT SIZE 50 ONLY



**NOTES:**

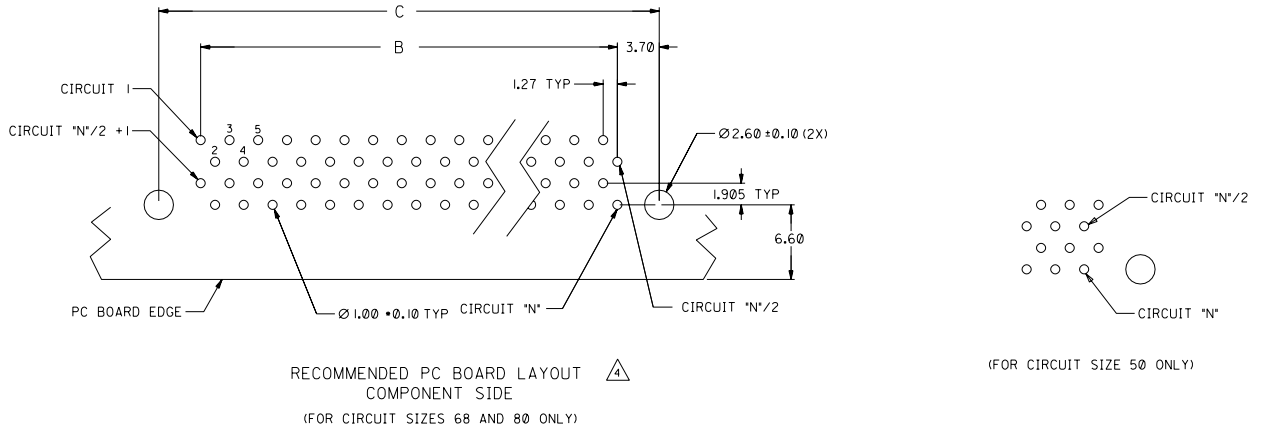
1. MATERIAL: HOUSING -- HIGH TEMP. THERMOPLASTIC, UL94-V0  
TERMINALS -- COPPER ALLOY
2. PLATING:
  - 2A 0.76µM MIN. GOLD IN SELECTIVE CONTACT AREA AND 2.54µM MIN. TIN-LEAD IN SOLDER TAIL AREA, BOTH OVER 1.27µM MIN. NICKEL.
  - 2B 0.75µM MIN. GOLD IN SELECTIVE CONTACT AREA AND 2.5µM MIN. TIN IN SOLDER TAIL AREA, BOTH OVER 1.27µM MIN. NICKEL.
3. ASSEMBLY MATES WITH MOLEX P/N 71661-\*\*\*\*.
4. RECOMMENDED P.C. BOARD THICKNESS IS 1.60MM.
5. PRODUCT SPEC. NO.: PS-87552-006
6. SEE TABLE ON SHEET 2 FOR ASSEMBLY PART NUMBERS.

ADD TIN PLATED OPTION	EC NO. 52004-016	030930	QUALITY SYMBOLS
DRWN: KSEE	CHK: KCLING	030930	MAJOR
APPR: SKTOH	030930		CRITICAL
REV	DESCRIPTION		
G1			

GENERAL TOLERANCES: (UNLESS SPECIFIED)	SCALE 3:1	DESIGN UNITS <input checked="" type="checkbox"/> mm <input type="checkbox"/> INCH
4 PLACES ±0. - ±. -	DRAWN BY & DATE	
3 PLACES ±0. - ±. -	D SOH 970401	
2 PLACES ±0.30 ±. -	CHECKED BY & DATE	
1 PLACE ±0. - ±. -	KC LING 970506	
ANGULAR: ± 3°	APPROVED BY & DATE	
	SK TOH 970508	
	CAD FILENAME	
	S87552AA.S01	

THIRD ANGLE PROJECTION	DIMENSIONS: <input type="checkbox"/> mm <input type="checkbox"/> INCH <input checked="" type="checkbox"/> mm ONLY	SHT 2	REV G1
TITLE: ASSY, 1.27mm PITCH, R/A EBBI RECEPT			
MATERIAL NO. SEE CHART	DRAWING NO. SD-87552-007	SHEET NO. 1 OF 2	REV G1
MOLEX INCORPORATED			
THIS DRAWING CONTAINS INFORMATION THAT IS PROPRIETARY TO MOLEX INCORPORATED AND SHOULD NOT BE USED WITHOUT WRITTEN PERMISSION.			SIZE A3

D	C	B	A	CKT SIZE	ASSEMBLY PART NUMBER (TIN/LEAD)	ASSEMBLY PART NUMBER (TIN)
36.02	37.88	30.48	41.70	50	87552-0501	87552-0507
47.45	49.31	41.91	53.13	68	87552-0681	87552-0687
55.07	56.93	49.53	60.75	80	87552-0801	87552-0807



ADD TIN PLATED OPTION		QUALITY SYMBOLS	GENERAL TOLERANCES: (UNLESS SPECIFIED)		SCALE	DESIGN UNITS	THIRD ANGLE PROJECTION	DIMENSIONS:		SHT	REV
EC NO.	DRWN. / CSEEN.		mm	INCH	3:1	mm	INCH	mm	INCH		
52004-0161	030930	MAJOR ▼ = 0	±0. -	±. -	DRAWN BY & DATE	<input checked="" type="checkbox"/> mm <input type="checkbox"/> INCH	<input checked="" type="checkbox"/> THIRD ANGLE	<input type="checkbox"/> mm <input checked="" type="checkbox"/> INCH	<input type="checkbox"/> mm <input checked="" type="checkbox"/> INCH		
030930	030930	CRITICAL ▽ = 0	4 PLACES ±0. -	±. -	D SOH 970401						
DRG. / CLING	030930		3 PLACES ±0. -	±. -	CHECKED BY & DATE						
APPR. / SCTION	030930		2 PLACES ±0.30	±. -	KC LING 970506						
DESCRIPTION			1 PLACE ±0. -	±. -	APPROVED BY & DATE						
					SK TOH 970508						
REV					ANGULAR: ± 3°	CAD FILENAME	MATERIAL NO.	DRAWING NO.	SHEET NO.		
G1						S87552AA.S01	SEE CHART	SD-87552-007	2 OF 2		