

Excellent Integrated System Limited

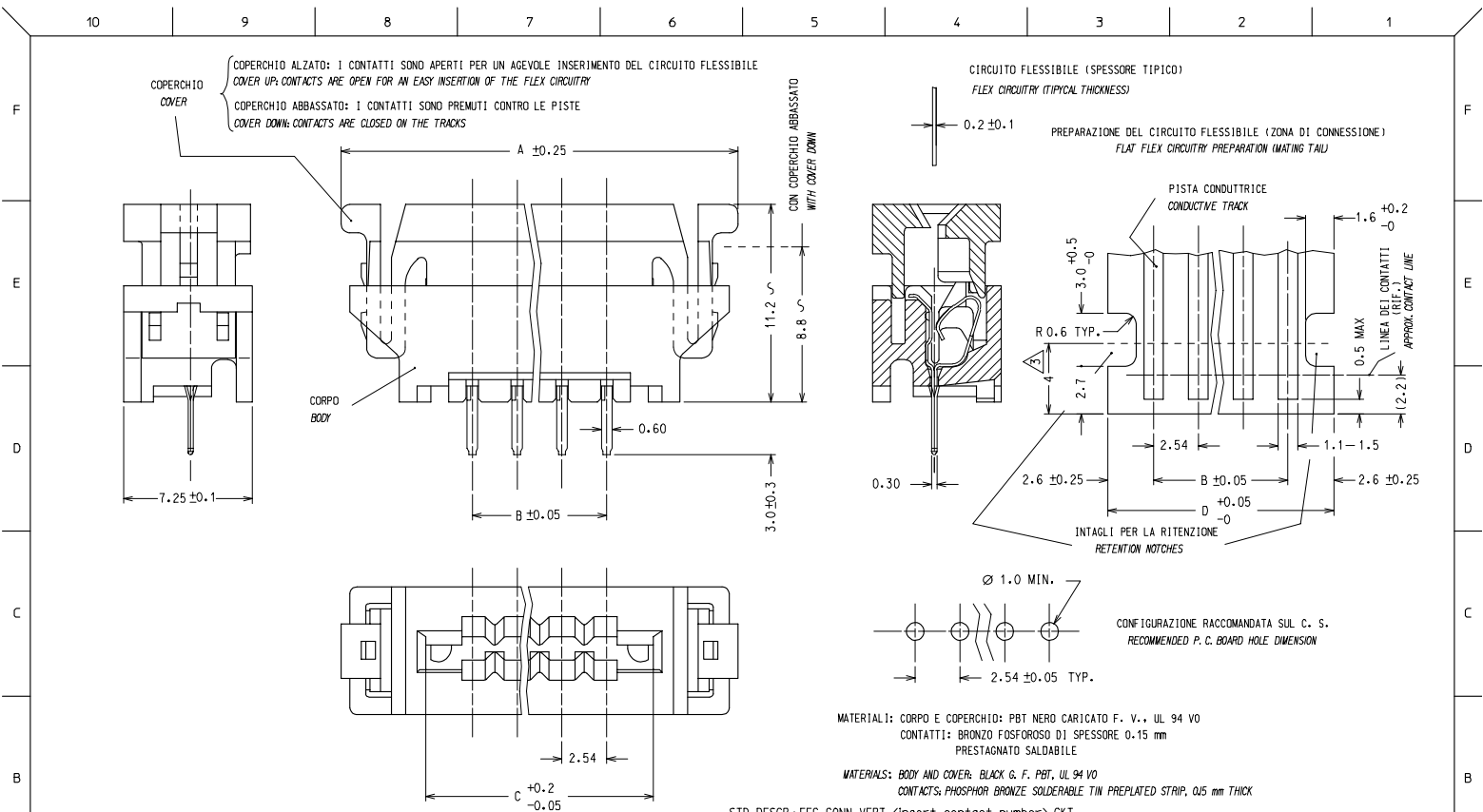
Stocking Distributor

Click to view price, real time Inventory, Delivery & Lifecycle Information:

[Molex Connector Corporation](#)
[90500-3016](#)

For any questions, you can email us directly:

sales@integrated-circuit.com



NOTE: 1) IL PRODOTTO VIENE FORNITO IN TUBI (VEDI FOGLIO 2/2)
 2) CARATTERISTICHE TECNICHE E FUNZIONALI COME DA PS 90500.
 3) LUNGHEZZA MINIMA DI ESPOSIZIONE DELLE PISTE
 4) SPQ: VEDERE FOGLIO 2/2

NOTE: 1) PRODUCT WILL BE SUPPLIED PACKAGED IN A TUBE (SEE SHEET 2/2)
 2) TECHNICAL CHARACTERISTICS AS INDICATED IN PS90500.
 3) MINIMUM EXPOSED LENGTH OF TRACKS
 4) SPQ: SEE SHEET 2/2

STD. DESCR.: FFC CONN VERT (insert contact number) CKT

FC NO: Z72005-0177 DRWNS: SBARBERI 2005/05/19 CHKDRS: SANDANO 2005/05/20 APPR: FBI SELLO 2005/05/20	QUALITY SYMBOLS	GENERAL TOLERANCES (UNLESS SPECIFIED)	DIMENSION STYLE	SCALE	DESIGN UNITS	FIRST ANGLE PROJECTION																		
	$\nabla=0$ $\nabla=0$	<table border="1"> <tr><th></th><th>mm</th><th>INCH</th></tr> <tr><td>4 PLACES</td><td>±---</td><td>±---</td></tr> <tr><td>3 PLACES</td><td>±---</td><td>±---</td></tr> <tr><td>2 PLACES</td><td>±0.05</td><td>±---</td></tr> <tr><td>1 PLACE</td><td>±0.10</td><td>±---</td></tr> <tr><td>ANGULAR</td><td>±---</td><td>±---</td></tr> </table>		mm	INCH	4 PLACES	±---	±---	3 PLACES	±---	±---	2 PLACES	±0.05	±---	1 PLACE	±0.10	±---	ANGULAR	±---	±---	MM ONLY	5:1	METRIC	
		mm	INCH																					
	4 PLACES	±---	±---																					
3 PLACES	±---	±---																						
2 PLACES	±0.05	±---																						
1 PLACE	±0.10	±---																						
ANGULAR	±---	±---																						
DESCRIPTION	DRAWN BY	DATE	TITLE																					
B1	SBARBERI	2000/04/13	FFC CONNECTOR VERTICAL MOUNTING VERSION																					
	APPROVED BY	DATE	MATERIAL NO.																					
	RMARTUCCI	2000/04/13	SD-90500-001																					
			DOCUMENT NO.																					
			SHEET NO.																					
			1 OF 2																					

DRAFT WHERE APPLICABLE MUST REMAIN WITHIN DIMENSIONS

SIZE A3

THIS DRAWING CONTAINS INFORMATION THAT IS PROPRIETARY TO MOLEX INCORPORATED AND SHOULD NOT BE USED WITHOUT WRITTEN PERMISSION

10 9 8 7 6 5 4 3 2 1

N° DI CODICE PART. NO.	ATTREZZAGGIO TOOLING	N° VIE CCT NO.	DIM "A"	DIM "B"	DIM "C"	DIM "D"	N° CONN./TUBO CONN. NO./TUBE	N° CONN./SCATOLA CONN. NO./BOX (SPQ)
90500-3002	NON ATTREZZATO NOT TOOLED	2						
90500-3003	"	3						
90500-3004	ATTREZZATO TOOLED	4	22.52	7.62	12.92	12.82	24	4320
90500-3005	"	5	25.06	10.16	15.46	15.36	21	3780
90500-3006	"	6	27.60	12.70	18.00	17.90	19	3420
90500-3007	"	7	30.14	15.24	20.54	20.44	17	3060
90500-3008	"	8	32.68	17.78	23.08	22.98	16	2880
90500-3009	"	9	35.22	20.32	25.62	25.52	15	2700
90500-3010	"	10	37.76	22.86	28.16	28.06	14	2520
90500-3011	"	11	40.30	25.40	30.70	30.60	13	2340
90500-3012	"	12	42.84	27.94	33.24	33.14	12	2160
90500-3013	"	13	45.38	30.48	35.78	35.68	11	1980
90500-3014	"	14	47.92	33.02	38.32	38.22	11	1980
90500-3015	"	15	50.46	35.56	40.86	40.76	10	1800
90500-3016	"	16	53.00	38.10	43.40	43.30	10	1800
90500-3017	"	17	55.54	40.64	45.94	45.84	9	1620
90500-3018	"	18	58.08	43.18	48.48	48.38	9	1620
90500-3019	"	19	60.62	45.72	51.02	50.92	8	1440
90500-3020	"	20	63.16	48.26	53.56	53.46	8	1440

FC NO: Z7005-0177 DRAWN: SBARBERI 2005/05/19 CHKD: RSANDANO 2005/05/20 APPR: FBISELLO 2005/05/20	QUALITY SYMBOLS	GENERAL TOLERANCES (UNLESS SPECIFIED)	DIMENSION STYLE MM ONLY	SCALE ---	DESIGN UNITS METRIC	FIRST ANGLE PROJECTION															
	$\nabla=0$ $\nabla=0$	<table border="1"> <tr><td>4 PLACES</td><td>\pm---</td><td>\pm---</td></tr> <tr><td>3 PLACES</td><td>\pm---</td><td>\pm---</td></tr> <tr><td>2 PLACES</td><td>\pm0.05</td><td>\pm---</td></tr> <tr><td>1 PLACE</td><td>\pm0.10</td><td>\pm---</td></tr> <tr><td colspan="2">ANGULAR</td><td>\pm---</td></tr> </table>	4 PLACES	\pm ---	\pm ---	3 PLACES	\pm ---	\pm ---	2 PLACES	\pm 0.05	\pm ---	1 PLACE	\pm 0.10	\pm ---	ANGULAR		\pm ---	DRAWN BY: SBARBERI DATE: 2000/04/15 CHECKED BY: RSANDANO DATE: 2000/04/15 APPROVED BY: FBISELLO DATE: 2000/04/15	TITLE FFC CONNECTOR VERTICAL MOUNTING VERSION		
	4 PLACES	\pm ---	\pm ---																		
	3 PLACES	\pm ---	\pm ---																		
2 PLACES	\pm 0.05	\pm ---																			
1 PLACE	\pm 0.10	\pm ---																			
ANGULAR		\pm ---																			
	DRAFT WHERE APPLICABLE MUST REMAIN WITHIN DIMENSIONS	SEE TABLE	MATERIAL NO.	DOCUMENT NO.	SHEET NO.																
				SD-90500-001	2 OF 2																

9 8 7 6 5 4 3 2 1