

Excellent Integrated System Limited

Stocking Distributor

Click to view price, real time Inventory, Delivery & Lifecycle Information:

[Johanson Technology Inc.](#)
[6120BP39A0240E](#)

For any questions, you can email us directly:

sales@integrated-circuit.com

High Frequency Ceramic Solutions

Preliminary

6.12 GHz Band Pass Filter (UWB High Rejection BPF) **P/N 6120BP39A0240**
 Detail Specification: 11/07/08 Page 1 of 2

General Specifications

Part Number	6120BP39A0240	
Frequency (MHz)	6000 - 6240	
Insertion Loss	4 dB max.	
Return Loss	19.43 dB min.	
Attenuation (min.)	< 2540 MHz	37 dB
Attenuation (min.)	< 5350 MHz	14 dB
Attenuation (min.)	> 7000 MHz	14 dB

Impedance	50 Ω
Input Power	500 mW max.
Operating Temperature	-40 to +85°C
Storage Temperature	+5 ~ +35°C, Humidity 45~75%RH, 12 mos. Max
Reel Quantity	3,000
MSL	2 *

* - 1 yr shelf life in bag; 1 week shelf life out of bag;
 Vacuum reseal unused reel

Mechanical Dimensions

	In	mm
L	0.098 ± 0.008	2.50 ± 0.20
W	0.079 ± 0.008	2.00 ± 0.20
T	0.043 ± 0.004	1.10 ± 0.10
a	0.012 ± 0.008	0.30 ± 0.20
b	0.024 ± 0.008	0.60 ± 0.20
c	0.012 ± 0.008	0.30 ± 0.20

Terminal Configuration

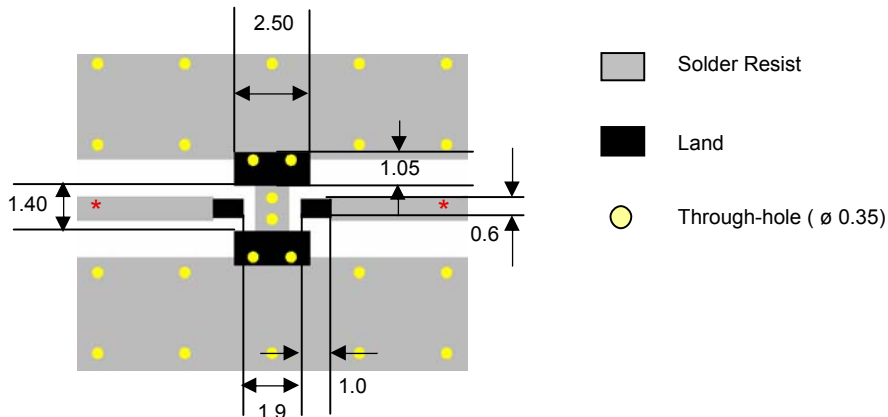
No.	Function
1	GND
2	OUT
3	GND
4	IN

Mounting Considerations

Mount these devices with brown mark facing up.

* Line width should be designed to provide 50Ω impedance matching characteristics.

Units: mm



Johanson Technology, Inc. reserves the right to make design changes without notice.

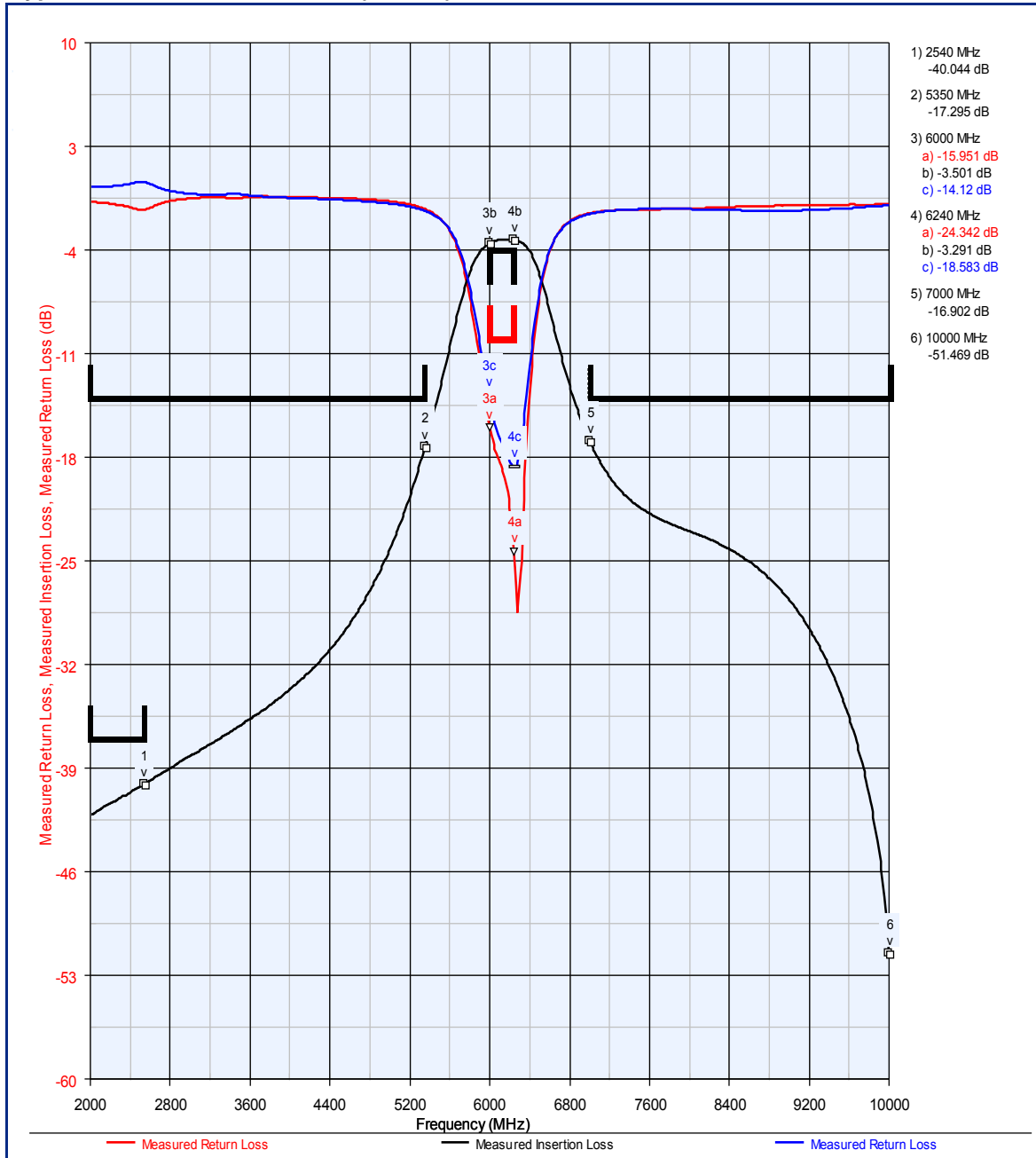
All sales are subject to Johanson Technology, Inc. terms and conditions.

High Frequency Ceramic Solutions

Preliminary

6.12 GHz Band Pass Filter (UWB High Rejection BPF) **P/N 6120BP39A0240**
 Detail Specification: 11/07/08 Page 2 of 2

Typical Electrical Performance (T=25°C)



Johanson Technology, Inc. reserves the right to make design changes without notice.
 All sales are subject to Johanson Technology, Inc. terms and conditions.