

Excellent Integrated System Limited

Stocking Distributor

Click to view price, real time Inventory, Delivery & Lifecycle Information:

[Cinch Connectivity Solutions](#)
[RFI3455-2-DD8](#)

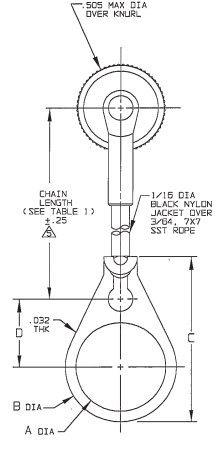
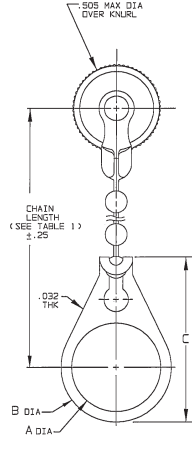
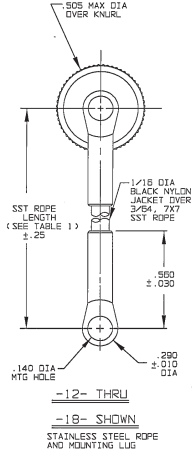
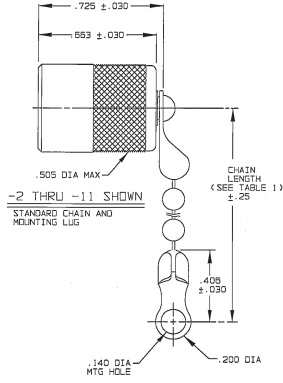
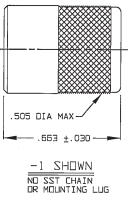
For any questions, you can email us directly:
sales@integrated-circuit.com

DASH NO	DESCRIPTION
-1	CAP (NO CHAIN)
-2	CAP WITH 2.50 BRASS CHAIN
-3	CAP WITH 2.50 NYLON CHAIN
-4	CAP WITH 3.00 BRASS CHAIN
-5	CAP WITH 3.00 NYLON CHAIN
-6	CAP WITH 4.00 BRASS CHAIN
-7	CAP WITH 4.00 NYLON CHAIN
-8	CAP WITH 5.00 BRASS CHAIN
-9	CAP WITH 5.00 NYLON CHAIN
-10	CAP WITH 6.00 BRASS CHAIN
-11	CAP WITH 6.00 NYLON CHAIN
-12	CAP WITH 2.50 JACKETED SST ROPE
-13	CAP WITH 3.00 JACKETED SST ROPE
-14	CAP WITH 4.00 JACKETED SST ROPE
-15	CAP WITH 5.00 JACKETED SST ROPE
-16	CAP WITH 6.00 JACKETED SST ROPE
-17	CAP WITH 7.00 JACKETED SST ROPE
-18	CAP WITH 8.00 JACKETED SST ROPE

DASH NO	"A" DIA	"B" DIA	"C" DIA	"D" DIA
-01	.755	.875	1.191	.513
-02	.830	.750	1.056	.450
-03	.505	.625	.941	.398
-04	.430	.562	.878	.356
-05	.380	.500	.818	.325
-06	.317	.437	.753	.294
-07	.281	.406	.722	.278
-08	.610	.750	1.068	.450
-09	.627	.687	1.003	.419
-10	.192	.312	.629	.231
-11	1.005	1.125	1.441	.638
-12	.330	.450	.768	.300

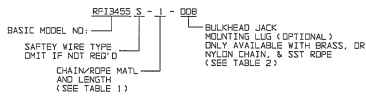
REVISIONS		1-0071	SH 1
REV	DESCRIPTION	DATE	APPROVED
E	REVISED PER ECO 15103	7/1/03	USJ

RED INDICATES ORIGINAL



NOTE THAT LENGTH FOR SST ROPE WITH MOUNTING LUG OPTION IS NOT MEASURED TO CENTER OF BULKHEAD MOUNTING LUG

4. EXAMPLE OF COMPLETE MODEL NO:



3. THREADED RFI CAP WITH & WITHOUT CHAIN, JACKETED STAINLESS STEEL ROPE OR SAFETY WIRE HOLES AND MOUNTING LUG OPTION
2. FINISH: TFS-1U (500 HRS SALT SPRAY)
1. ALL DIM ARE IN INCHES

INSPECT DRAWING FOR MISREADS INDICATING AS TO DIMS AND UNLESS OTHERWISE SPECIFIED	TOL: UNLESS SPECIFIED .XX .XXX ± .005 ANGLES
DATE: 6/27/03	MATERIAL:
REV: 1	FINISH:
DATE: 7/1/03	DATE: 7/1/03
DATE: 7/1/03	DATE: 7/1/03

TROMPETER RF connectivity	
TITLE: RFI3455/S	
SIZE: A 14849	DRAWING NO: 1-0071
SCALE: 4/1	DATE: 1-28-88
REV: E	SHEET 1C

NEXT ASSY: 150071E (D) NOT SCALE DIM