



**Distributor of Amphenol Commercial Products: Excellent Integrated System Limited**  
Datasheet of 17EHD062SAA232 - D-Sub Connector Receptacle, Female Sockets 62 Position  
Free Hanging (In-Line) Solder Cup

Contact us: [sales@integrated-circuit.com](mailto:sales@integrated-circuit.com) Website: [www.integrated-circuit.com](http://www.integrated-circuit.com)

---

## **Excellent Integrated System Limited**

Stocking Distributor

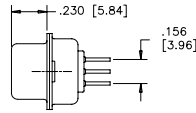
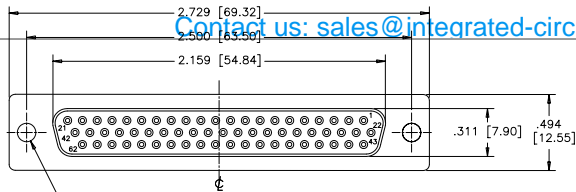
Click to view price, real time Inventory, Delivery & Lifecycle Information:

[Amphenol Commercial Products](#)  
[17EHD062SAA232](#)

For any questions, you can email us directly:  
[sales@integrated-circuit.com](mailto:sales@integrated-circuit.com)

Contact us: sales@integrated-circuit.com Website: www.integrated-circuit.com

REVISIONS			
REV	ECN, ERN NO.	DATE	APPRD.
1	PRODUCT DRAWING (EAR 12956)	JUL26/06	K.L.



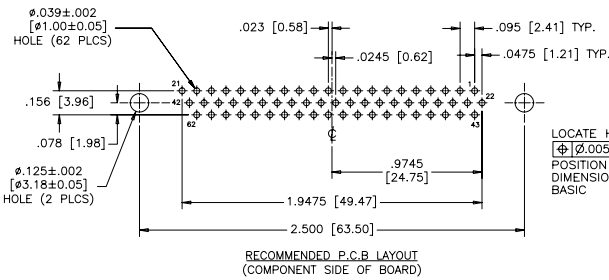
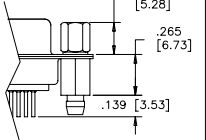
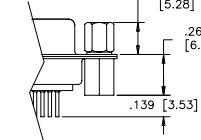
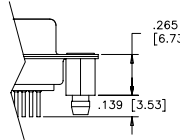
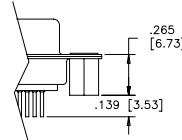
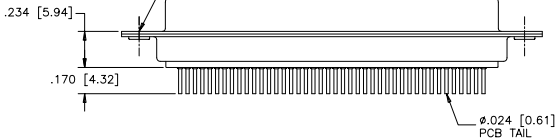
TERMINATION-MTG OPTION 030  
 .120 [3.05] DIA. THROUGH HOLES (2 PLACES), SEE ORDERING CODE.

TERMINATION-MTG OPTION 130  
 VERTICAL MOUNT, #4-40 UNC THREADED THROUGH STANDOFFS

TERMINATION-MTG OPTION 132  
 VERTICAL MOUNT, #4-40 UNC STANDOFFS WITH BOARDLOCKS

TERMINATION-MTG OPTION 230  
 VERTICAL MOUNT, #4-40 UNC HEX JACK SOCKETS, STANDOFFS

TERMINATION-MTG OPTION 232  
 VERTICAL MOUNT, #4-40 UNC HEX JACK SOCKETS, STANDOFFS WITH BOARDLOCKS



LOCATE HOLES  
 Ø .005 [0.13]  
 POSITION DIMENSIONS ARE BASIC

**ORDERING CODE:**

PART NUMBER: 1 7 E H D - 0 6 2 S X X - X 3 X

SERIES ————  
 NUMBER OF CONTACTS ————

STYLE  
 S=SOCKET

TERMINATION-MOUNTING OPTIONS  
 030=VERTICAL MOUNT, ø.120 [3.05] THROUGH HOLE  
 130=VERTICAL MOUNT, #4-40 UNC STANDOFFS  
 132=VERTICAL MOUNT, #4-40 UNC STANDOFFS WITH BOARDLOCKS  
 230=VERTICAL MOUNT, #4-40 UNC HEX JACK SOCKETS, STANDOFFS  
 232=VERTICAL MOUNT, #4-40 UNC HEX JACK SOCKETS, STANDOFFS WITH BOARDLOCKS

**CONTACT PLATING OPTIONS**

AA=ENGAGEMENT AREA 3µ" [0.08 MICRONS] GOLD FLASH  
 CH=ENGAGEMENT AREA 15µ" [0.38 MICRONS] GOLD  
 AM=ENGAGEMENT AREA 30µ" [0.76 MICRONS] GOLD

**SPECIFICATIONS:**

MATERIALS: ALL MATERIALS ARE RoHS COMPLIANT

SHELL: STEEL, TIN PLATED

INSERTS: HIGH TEMPERATURE RESISTANT NYLON, GLASS REINFORCED, UL FLAMMABILITY RATING 94V-0, COLOUR: BLACK

CONTACTS: COPPER ALLOY, GOLD PLATING (SEE ORDERING CODE) OVER 50µ" [1.27 MICRONS] NICKEL ON ENGAGEMENT AREA WITH 100µ" [2.54 MICRONS] MIN. MATTE TIN ON CONTACT TERMINALS.

BOARDLOCK: COPPER ALLOY, TIN PLATED

**ELECTRICAL DATA:**

CURRENT RATING: 3 AMP

CONTACT RESISTANCE: 15 MILLIOHMS MAX.

INSULATION RESISTANCE: 3000 MEGOHMS MIN.

DIELECTRIC WITHSTANDING VOLTAGE: 1000 VAC rms

OPERATING TEMPERATURE: -55°C TO +105°C

DRAWN	E.CHEN	DATE	JUN27/06
DESIGNED			
CHECKED	K.LAMBIE	DATE	JUL26/06
I. E. APPRD.			
Q. A. APPRD.			
DWG. APPRD.			
ENG. REL. NO.		DWG	DRAWING NO.
REF.	EAR 12955	C	P-17EHD-062SXX-X3X
DIMENSIONS ARE IN INCHES [mm]	03554	SCALE	2/1

**Amphenol Canada Corp.**  
 TITLE 17EHD SERIES HIGH DENSITY D-SUB CONNECTOR, 62 SIZE SOCKET, VERTICAL PCB MOUNT CONTACTS, PLATING & MOUNTING OPTIONS, RoHS COMPLIANT

THIS DOCUMENT CONTAINS PROPRIETARY INFORMATION AND SUCH INFORMATION MAY NOT BE DISCLOSED TO OTHERS FOR ANY PURPOSE OR USED FOR MANUFACTURING PURPOSES WITHOUT WRITTEN PERMISSION FROM AMPHENOL CANADA CORP.

WT.	-----	SURF.	-----	SHEET	1 OF 1
-----	-------	-------	-------	-------	--------