



Excellent Integrated System Limited

Stocking Distributor

Click to view price, real time Inventory, Delivery & Lifecycle Information:

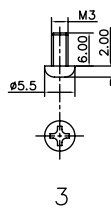
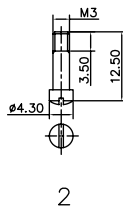
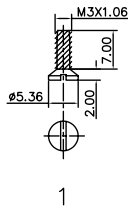
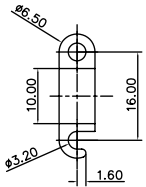
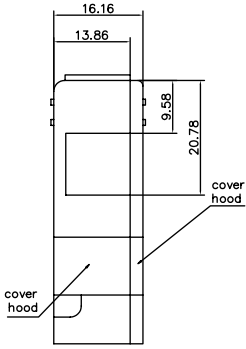
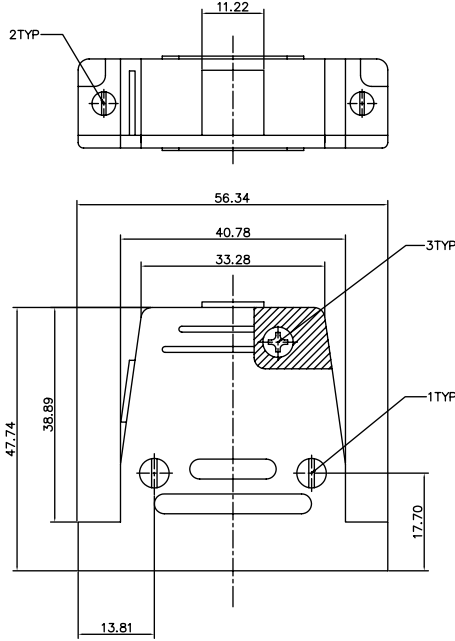
[Amphenol Commercial Products](#)

[L17158906](#)

For any questions, you can email us directly:

sales@integrated-circuit.com

The document is the property of Amphenol Corporation and is delivered on the express condition that it is not to be disclosed, reproduced or used, in whole or in part, for manufacture or sale by anyone other than Amphenol Corporation without its prior consent. All rights are granted to Amphenol or to use any information in this document.



REVISIONS				
SYM	ECN	DESCRIPTION	DATE	APPROVED
A			07/03/07	

D-SUB TECHNICAL DATA

Hood, plastic, For 25 positions D-SUB connectors
 MATERIAL :plastic
 CLIMATIC : Temperature range -30 °C up to 90°C
 MARKING : Amphenol...(Series No.)
 Commercial reference
 Manufacturing date

PRODUCT CODE

L 17158906
 ROHS

UNLESS OTHERWISE SPECIFIED		APPROVAL	DATE
TOLERANCES		DRAWN	07/03/07
U.S.		CHECKED	07/03/07
X	+/-	0.50	
XX	+/-	0.30	
XXX	+/-	0.20	
FRACTIONS		2'	
ANGLES		2'	
FOR MATERIALS AND FINISHES		DRAWING FILE :	
REMOVE SHARP EDGES		ANGLE OF PROJECTION	
DIMENSIONS		FIRST ANGLE	
U.S.		INCHES	
METRIC		MM	

Amphenol		
TITLE		
hood		
SIZE	DRAWING NO.	REV.
A4	C L17158906	A
SCALE	NONE	SHEET 1 OF 1