

Excellent Integrated System Limited

Stocking Distributor

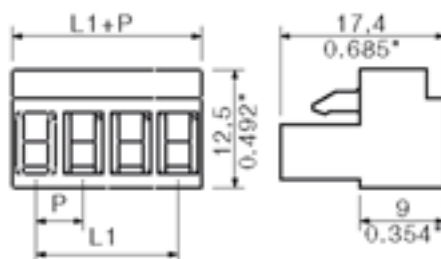
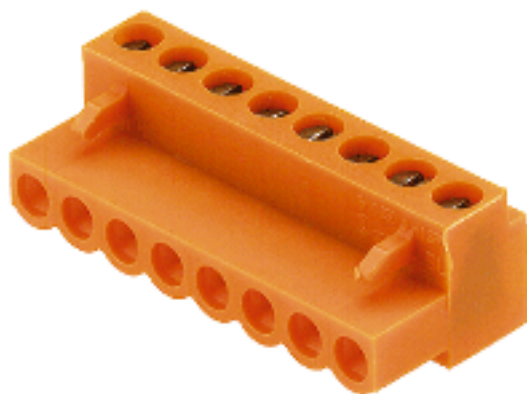
Click to view price, real time Inventory, Delivery & Lifecycle Information:

[Weidmüller](#)
[1730820000](#)

For any questions, you can email us directly:

sales@integrated-circuit.com

Product catalogue | PCB connection systems | PCB plug-in connectors | Pitch 5.00 / 5.08 mm (0.197 / 0.200 inch) | Socket connectors, pressure clamp connection, pitch 5.00/5.08 | BL 5.00/5.08 | BL 5.00


General ordering data

Order No.	1730820000
Part designation	BL 5.00/14 SN SW
Version	PCB plug-in connector, Female connectors, Leaf spring connection, Clamping range, max.: 2.08 mm ² , Pitch: 5.00 mm, No. of poles: 14, 180°, Box
EAN	4008190387211
Qty.	50 pc(s).

System parameters

Conductor connection system	Leaf spring connection
Outgoing direction of conductor	180°
Pitch	5 mm
Pitch in inch	0.197 inch
No. of poles	14
No. of rows	1
Tightening torque, min.	0.4 Nm
Tightening torque, max.	0.5 Nm
Clamping screw	M 2.5
Stripping length	6 mm
L1 in mm	65 mm
L1 in inch	2.559 inch
Electric shock protection to DIN VDE 0470	IP 00

Material data

Insulating material	PA
Colour	black
colour chart	Similar to RAL 9011
Insulating material group	I
Flammability class UL 94	V-2
CTI	>= 200
Contact base material	CuSn
Contact surface	tinned

Product catalogue | PCB connection systems | PCB plug-in connectors | Pitch 5.00 / 5.08 mm (0.197 / 0.200 inch) |
 Socket connectors, pressure clamp connection, pitch 5.00/5.08 | BL 5.00/5.08 | BL 5.00

Connectable conductors

Clamping range, min.	0.13 mm ²
Clamping range, max.	2.08 mm ²
AWG, min.	26
AWG, max.	14
Solid, min. H05(07) V-U	0.5 mm ²
Solid, max. H05(07) V-U	1.5 mm ²
Flexible, min. H05(07) V-K	0.5 mm ²
Flexible, max. H05(07) V-K	1.5 mm ²
With wire end ferrule, acc. to DIN 46 228/1, min.	0.5 mm ²
w. plastic collar ferrule, DIN 46228 pt 4, min.	0.5 mm ²
w. plastic collar ferrule, DIN 46228 pt 4, max.	1 mm ²
Gauge to EN 60999 a x b; ø	2.4 mm x 1.5 mm;

DIN IEC rating data

Rated current, min. No. pins (Tu=20°C)	14 A
Rated current, max. No. pins (Tu=20°C)	12 A
Rated current, min. No. pins (Tu=40°C)	12 A
Rated current, max. No. pins (Tu=40°C)	10 A
Rated voltage for overvoltage class/pollution severity II/2	400 V
Rated voltage for overvoltage class/pollution severity III/2	320 V
Rated voltage for overvoltage class/pollution severity III/3	250 V
Rated impulse withstand voltage for overvoltage class/pollution severity II/2	4 kV
Rated impulse withstand voltage for overvoltage class/pollution severity III/2	4 kV
Rated impulse withstand voltage for overvoltage class/pollution severity III/3	4 kV

CSA rating data

Rated voltage (Use group D)	300 V
Rated current (Use group D)	10 A
AWG conductor (field wiring), min.	26
AWG conductor (field wiring), max.	14

UL 1059 rating data

Rated voltage (Use group D)	300 V
Rated current (Use group D)	10 A
AWG conductor, min.	26
AWG conductor, max.	14

Approvals

Approvals institutes



Product catalogue | PCB connection systems | PCB plug-in connectors | Pitch 5.00 / 5.08 mm (0.197 / 0.200 inch) | Socket connectors, pressure clamp connection, pitch 5.00/5.08 | BL 5.00/5.08 | BL 5.00

Classifications

ETIM 2.0	NK
ETIM 3.0	EC001284
eClass 4.1	27-26-07-01
eClass 5.0	27-26-07-01
eClass 5.1	27-26-07-04

Similar products

Order No.	Part designation	Version
1762770000	BL 5.00/2 SN GR	PCB plug-in connector, Female connectors, Leaf spring connection, Clamping range, max.: 2.08 mm ² , Pitch: 5.00 mm, No. of poles: 2, 180°, Box
1723110000	BL 5.00/2 SN OR	PCB plug-in connector, Female connectors, Leaf spring connection, Clamping range, max.: 2.08 mm ² , Pitch: 5.00 mm, No. of poles: 2, 180°, Box
1730700000	BL 5.00/2 SN SW	PCB plug-in connector, Female connectors, Leaf spring connection, Clamping range, max.: 2.08 mm ² , Pitch: 5.00 mm, No. of poles: 2, 180°, Box
1723120000	BL 5.00/3 SN OR	PCB plug-in connector, Female connectors, Leaf spring connection, Clamping range, max.: 2.08 mm ² , Pitch: 5.00 mm, No. of poles: 3, 180°, Box
1730710000	BL 5.00/3 SN SW	PCB plug-in connector, Female connectors, Leaf spring connection, Clamping range, max.: 2.08 mm ² , Pitch: 5.00 mm, No. of poles: 3, 180°, Box
1762790000	BL 5.00/4 SN GR	PCB plug-in connector, Female connectors, Leaf spring connection, Clamping range, max.: 2.08 mm ² , Pitch: 5.00 mm, No. of poles: 4, 180°, Box
1723130000	BL 5.00/4 SN OR	PCB plug-in connector, Female connectors, Leaf spring connection, Clamping range, max.: 2.08 mm ² , Pitch: 5.00 mm, No. of poles: 4, 180°, Box
1730720000	BL 5.00/4 SN SW	PCB plug-in connector, Female connectors, Leaf spring connection, Clamping range, max.: 2.08 mm ² , Pitch: 5.00 mm, No. of poles: 4, 180°, Box
1723140000	BL 5.00/5 SN OR	PCB plug-in connector, Female connectors, Leaf spring connection, Clamping range, max.: 2.08 mm ² , Pitch: 5.00 mm, No. of poles: 5, 180°, Box
1730730000	BL 5.00/5 SN SW	PCB plug-in connector, Female connectors, Leaf spring connection, Clamping range, max.: 2.08 mm ² , Pitch: 5.00 mm, No. of poles: 5, 180°, Box
1723150000	BL 5.00/6 SN OR	PCB plug-in connector, Female connectors, Leaf spring connection, Clamping range, max.: 2.08 mm ² , Pitch: 5.00 mm, No. of poles: 6, 180°, Box
1730740000	BL 5.00/6 SN SW	PCB plug-in connector, Female connectors, Leaf spring connection, Clamping range, max.: 2.08 mm ² , Pitch: 5.00 mm, No. of poles: 6, 180°, Box
1723160000	BL 5.00/7 SN OR	PCB plug-in connector, Female connectors, Leaf spring connection, Clamping range, max.: 2.08 mm ² , Pitch: 5.00 mm, No. of poles: 7, 180°, Box

Product catalogue | PCB connection systems | PCB plug-in connectors | Pitch 5.00 / 5.08 mm (0.197 / 0.200 inch) | Socket connectors, pressure clamp connection, pitch 5.00/5.08 | BL 5.00/5.08 | BL 5.00

1730750000	BL 5.00/7 SN SW	PCB plug-in connector, Female connectors, Leaf spring connection, Clamping range, max.: 2.08 mm ² , Pitch: 5.00 mm, No. of poles: 7, 180°, Box
1723170000	BL 5.00/8 SN OR	PCB plug-in connector, Female connectors, Leaf spring connection, Clamping range, max.: 2.08 mm ² , Pitch: 5.00 mm, No. of poles: 8, 180°, Box
1730760000	BL 5.00/8 SN SW	PCB plug-in connector, Female connectors, Leaf spring connection, Clamping range, max.: 2.08 mm ² , Pitch: 5.00 mm, No. of poles: 8, 180°, Box
1723180000	BL 5.00/9 SN OR	PCB plug-in connector, Female connectors, Leaf spring connection, Clamping range, max.: 2.08 mm ² , Pitch: 5.00 mm, No. of poles: 9, 180°, Box
1730770000	BL 5.00/9 SN SW	PCB plug-in connector, Female connectors, Leaf spring connection, Clamping range, max.: 2.08 mm ² , Pitch: 5.00 mm, No. of poles: 9, 180°, Box
1723190000	BL 5.00/10 SN OR	PCB plug-in connector, Female connectors, Leaf spring connection, Clamping range, max.: 2.08 mm ² , Pitch: 5.00 mm, No. of poles: 10, 180°, Box
1730780000	BL 5.00/10 SN SW	PCB plug-in connector, Female connectors, Leaf spring connection, Clamping range, max.: 2.08 mm ² , Pitch: 5.00 mm, No. of poles: 10, 180°, Box
1723200000	BL 5.00/11 SN OR	PCB plug-in connector, Female connectors, Leaf spring connection, Clamping range, max.: 2.08 mm ² , Pitch: 5.00 mm, No. of poles: 11, 180°, Box
1730790000	BL 5.00/11 SN SW	PCB plug-in connector, Female connectors, Leaf spring connection, Clamping range, max.: 2.08 mm ² , Pitch: 5.00 mm, No. of poles: 11, 180°, Box
1723210000	BL 5.00/12 SN OR	PCB plug-in connector, Female connectors, Leaf spring connection, Clamping range, max.: 2.08 mm ² , Pitch: 5.00 mm, No. of poles: 12, 180°, Box
1730800000	BL 5.00/12 SN SW	PCB plug-in connector, Female connectors, Leaf spring connection, Clamping range, max.: 2.08 mm ² , Pitch: 5.00 mm, No. of poles: 12, 180°, Box
1723220000	BL 5.00/13 SN OR	PCB plug-in connector, Female connectors, Leaf spring connection, Clamping range, max.: 2.08 mm ² , Pitch: 5.00 mm, No. of poles: 13, 180°, Box
1730810000	BL 5.00/13 SN SW	PCB plug-in connector, Female connectors, Leaf spring connection, Clamping range, max.: 2.08 mm ² , Pitch: 5.00 mm, No. of poles: 13, 180°, Box
1723230000	BL 5.00/14 SN OR	PCB plug-in connector, Female connectors, Leaf spring connection, Clamping range, max.: 2.08 mm ² , Pitch: 5.00 mm, No. of poles: 14, 180°, Box
1723240000	BL 5.00/15 SN OR	PCB plug-in connector, Female connectors, Leaf spring connection, Clamping range, max.: 2.08 mm ² , Pitch: 5.00 mm, No. of poles: 15, 180°, Box
1730830000	BL 5.00/15 SN SW	PCB plug-in connector, Female connectors, Leaf spring connection, Clamping range, max.: 2.08 mm ² , Pitch: 5.00 mm, No. of poles: 15, 180°, Box
1723250000	BL 5.00/16 SN OR	PCB plug-in connector, Female connectors, Leaf spring connection, Clamping range, max.: 2.08 mm ² , Pitch: 5.00 mm, No. of poles: 16, 180°, Box

Product catalogue | PCB connection systems | PCB plug-in connectors | Pitch 5.00 / 5.08 mm (0.197 / 0.200 inch) |
Socket connectors, pressure clamp connection, pitch 5.00/5.08 | BL 5.00/5.08 | BL 5.00

1730840000 BL 5.00/16 SN SW

PCB plug-in connector, Female connectors, Leaf spring connection,
Clamping range, max.: 2.08 mm², Pitch: 5.00 mm, No. of poles: 16,
180°, Box