

Excellent Integrated System Limited

Stocking Distributor

Click to view price, real time Inventory, Delivery & Lifecycle Information:

[Electronic Assembly GmbH](#)

[EA B254-20](#)

For any questions, you can email us directly:

sales@integrated-circuit.com



REV	DATE	FILE	BY
A	29-Jan-2004	New Mold	Jeremy Liu

DRAWN:	Jeremy Liu
CHECKED:	Jerry Chen
APPROVAL:	Mike Wu

GENERAL TOLERANCE:	.X = ±0.2 .XX = ±0.15
UNIT:	MM
SCALE:	10:1
SHEET:	1 / 1
PROJECTION:	

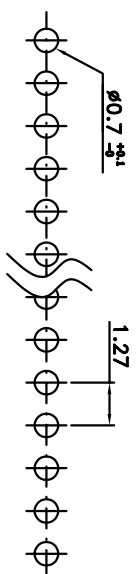
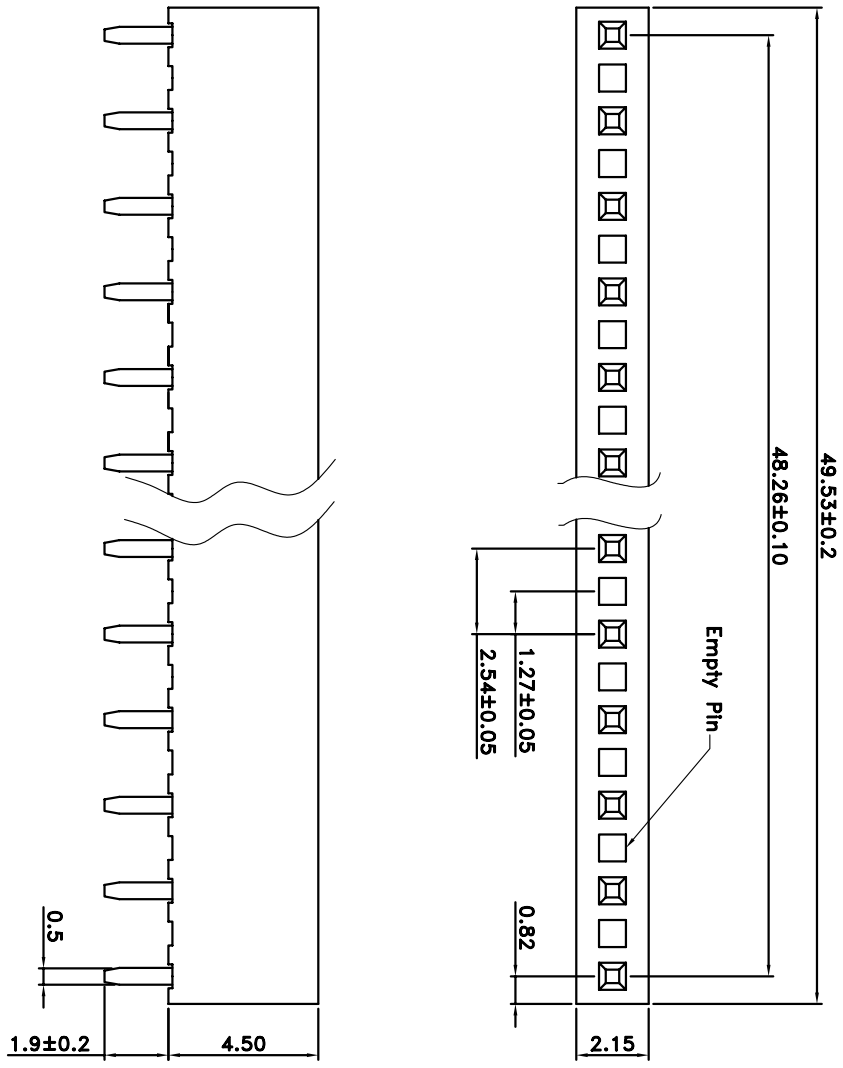
DESCRIPTION:	1.27MM CENTER SINGLE ROW PCB SOCKET
PART NO.:	2200SA-39SG-E2X



繼德工業股份有限公司
Neltron Industrial Co., Ltd.

SIZE

A4



P.C.B LAYOUT

Specifications:
 Current rating: 1 Amps
 Dielectric Withstanding: AC 500V
 Operating Temperature: -25°C ~ +105°C
 Contact resistance: 20mohm max.
 Insulation resistance: 5,000Mohm min.

Materials:
 Insulator: PBT (UL94V-0)
 Contact material: Phosphor Bronze
 Plating: Selective Gold Plated

HOW TO ORDER
 2200SA-39SG-E2X

Empty Pin
 Selective Gold Plating 1u"
 No. Of Position
 Series Number