

Excellent Integrated System Limited

Stocking Distributor

Click to view price, real time Inventory, Delivery & Lifecycle Information:

[Knowles](#)

[TO-30023-000](#)

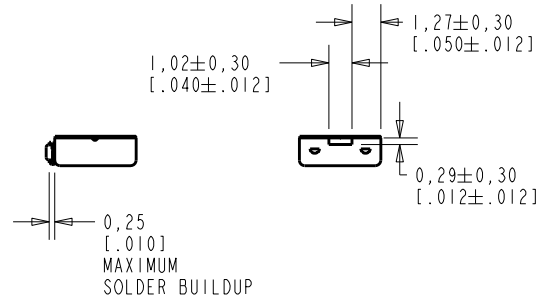
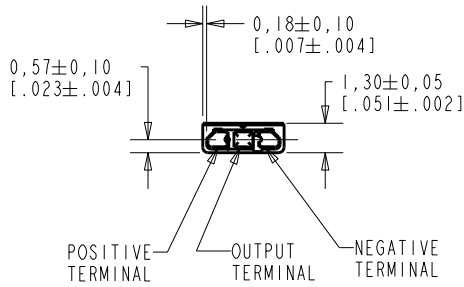
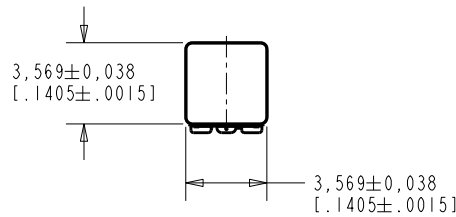
For any questions, you can email us directly:

sales@integrated-circuit.com

TO-30023-000
SHT 1.1

NOTES:

- INCREASED PRESSURE AT THE SOUND INLET CAUSES A POSITIVE GOING VOLTAGE TO APPEAR AT THE OUTPUT TERMINAL, RELATIVE TO THE NEGATIVE TERMINAL.



NOMINAL WEIGHT
.063 GRAMS

DIMENSIONS IN MILLIMETERS [INCHES]

Revision	C.O. #	Implementation Date	RELEASE LEVEL	REVISION
I	MI0105051	6-3-13	Active	I
H	MI0104164	6-15-11		
G	MI0103810	8-24-10		

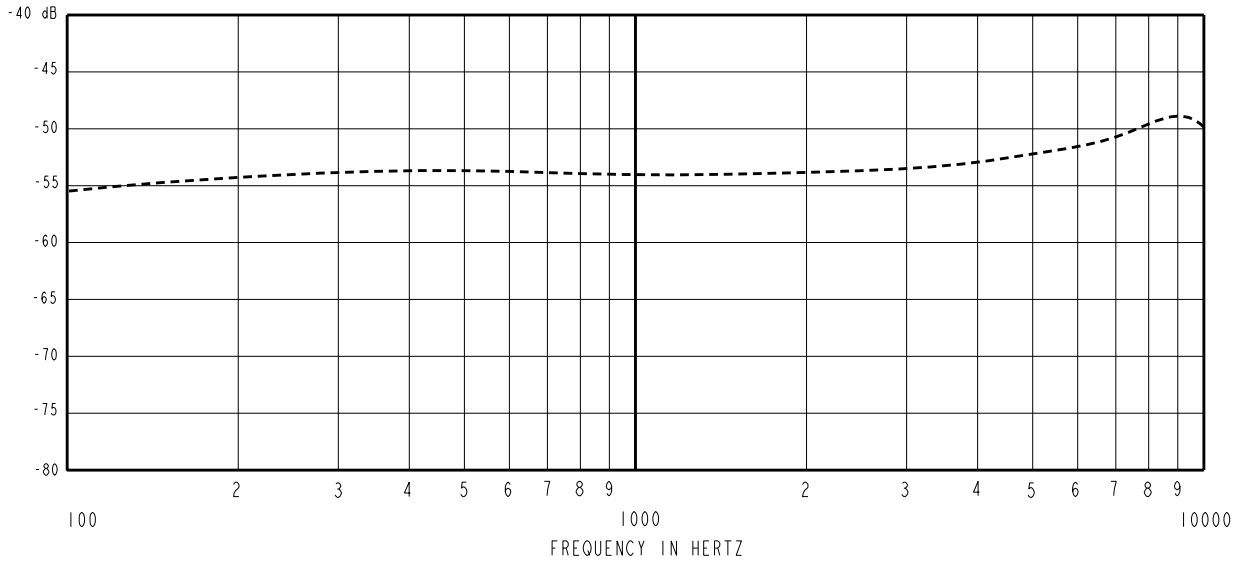
KNOWLES ELECTRONICS
ITASCA, ILLINOIS U.S.A.

SCALE:	4:1		DR. BY	DATE
DO NOT SCALE DRAWING			MMM	6-15-06
TITLE:	MICROPHONE	TO-30023-000	CK. BY	DATE
OUTLINE DRAWING		SHT 1.1	GJP	6-20-06
			APP. BY	DATE
			GJP	6-20-06

KE111ASIZE.FRM

Rev: B

SENSITIVITY IN dB RELATIVE TO 1.0 VOLT/0.1 Pa (N/M²)
FOR CONDITIONS SHOWN BELOW.

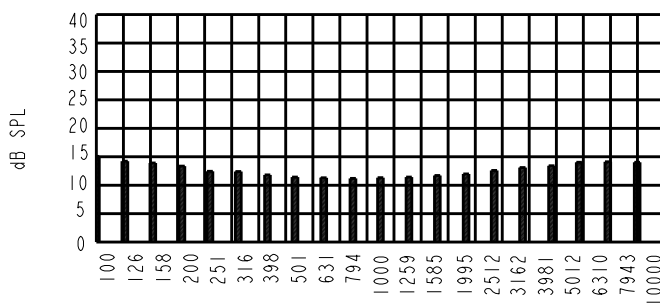


FREQUENCY	SENSITIVITY			DEVICE CONFORMITY	
	MIN.	NOM.	MAX.	RANGE OF DEVIATION FROM 1KHz	
70	---	-57.0	---	-5.0	-1.0
1000	-57.0	-54.0	-51.0	0.0	0.0
9500	---	-49.0	---	+2.0	+8.0

- NOTES:
1. CASE CONNECTED TO NEGATIVE TERMINAL.
 2. MICROPHONE TO BE FUNCTIONAL WITH 1.6 VDC SUPPLY.
 3. TYPICAL SENSITIVITY TO HUMIDITY AT 1000Hz IS 0.03 dB/%RH
 4. SENSITIVITY AND NOISE VALUES INDICATED ON THIS SPECIFICATION ARE VALID AT 50% HUMIDITY.

PORT LOCATION	DC SUPPLY	AMPLIFIER CURRENT DRAIN	SENSITIVITY CHANGE ON REDUCING SUPPLY TO 0.9VDC	"A" WEIGHTED NOISE (1 kHz EQUIV. SPL)		OUTPUT IMPEDANCE OHMS		
				NOM.	MAX.	MIN.	NOM.	MAX.
12N	1.3V	75 µA MAX.	3 dB MAX.	25.0 dB	27.0 dB	1500	3750	6000

1/3RD OCTAVE BAND INPUT REFERRED NOISE - TYPICAL



3RD O.B. (Hz)