

## Excellent Integrated System Limited

Stocking Distributor

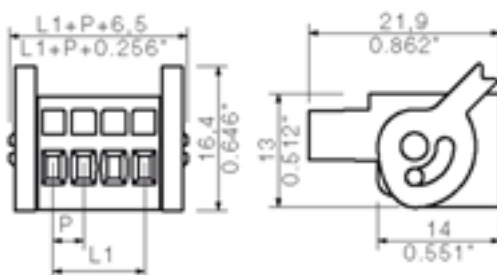
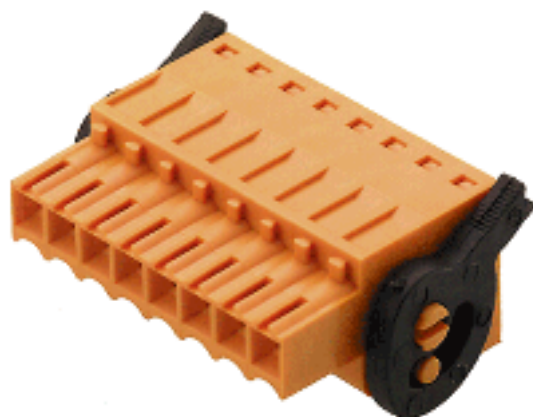
Click to view price, real time Inventory, Delivery & Lifecycle Information:

[Weidmüller](#)  
[1691880000](#)

For any questions, you can email us directly:

[sales@integrated-circuit.com](mailto:sales@integrated-circuit.com)

Product catalogue | PCB connection systems | PCB plug-in connectors | Pitch 3.50 mm (0.138 inch) | Socket connectors, tension clamp connection, pitch 3.5 | BLZF 3.5 | BLZF 3.5/180LH



#### General ordering data

Order No.	1691880000
Part designation	BLZF 3.5/10/LH SN SW
Version	PCB plug-in connector, Female connectors, Tension clamp connection, Clamping range, max.: 1.5 mm <sup>2</sup> , Pitch: 3.50 mm, No. of poles: 10, 180°, Box
EAN	4008190373856
Qty.	50 pc(s).

#### System parameters

Conductor connection system	Tension clamp connection
Outgoing direction of conductor	180°
Pitch	3.5 mm
Pitch in inch	0.138 inch
No. of poles	10
No. of rows	1
Screwdriver blade	0.4 x 2.5
Screwdriver blade standard	DIN 5264-A
Stripping length	10 mm
L1 in mm	31.5 mm
L1 in inch	1.24 inch
Electric shock protection to DIN VDE 0470	IP 20
Electric shock protection to DIN VDE 0470	Safe from finger touch

Product catalogue | PCB connection systems | PCB plug-in connectors | Pitch 3.50 mm (0.138 inch) | Socket connectors, tension clamp connection, pitch 3.5 | BLZF 3.5 | BLZF 3.5/180LH

### System parameters

#### Material data

Insulating material	PBT
Colour	black
colour chart	Similar to RAL 9011
Insulating material group	IIIa
Flammability class UL 94	V-0
CTI	>= 200
Contact base material	Copper alloy
Contact surface	tinned

#### Connectable conductors

Clamping range, min.	0.13 mm <sup>2</sup>
Clamping range, max.	1.5 mm <sup>2</sup>
AWG, min.	28
AWG, max.	16
Outer diameter of insulation, max.	2.9 mm
Solid, min. H05(07) V-U	0.2 mm <sup>2</sup>
Solid, max. H05(07) V-U	1.5 mm <sup>2</sup>
Flexible, min. H05(07) V-K	0.2 mm <sup>2</sup>
Flexible, max. H05(07) V-K	1.5 mm <sup>2</sup>
With wire end ferrule, acc. to DIN 46 228/1, min.	0.2 mm <sup>2</sup>
With wire end ferrule, acc. to DIN 46 228/1, max.	1.5 mm <sup>2</sup>
w. plastic collar ferrule, DIN 46228 pt 4, min.	0.2 mm <sup>2</sup>
w. plastic collar ferrule, DIN 46228 pt 4, max.	1 mm <sup>2</sup>
Gauge to EN 60999 a x b; ø	2.4 mm x 1.5 mm;

#### DIN IEC rating data

Rated current, min. No. pins (Tu=20°C)	14.5 A
Rated current, max. No. pins (Tu=20°C)	10 A
Rated current, min. No. pins (Tu=40°C)	12 A
Rated current, max. No. pins (Tu=40°C)	8 A
Rated voltage for overvoltage class/pollution severity II/2	320 V
Rated voltage for overvoltage class/pollution severity III/2	160 V
Rated voltage for overvoltage class/pollution severity III/3	160 V
Rated impulse withstand voltage for overvoltage class/pollution severity II/2	2.5 kV
Rated impulse withstand voltage for overvoltage class/pollution severity III/2	2.5 kV
Rated impulse withstand voltage for overvoltage class/pollution severity III/3	2.5 kV
Short-time withstand current resistance	3 x 1s with 100 A

#### CSA rating data

Rated voltage (Use group D)	300 V
Rated current (Use group D)	10 A
AWG conductor (field wiring), min.	26
AWG conductor (field wiring), max.	14

Product catalogue | PCB connection systems | PCB plug-in connectors | Pitch 3.50 mm (0.138 inch) | Socket connectors, tension clamp connection, pitch 3.5 | BLZF 3.5 | BLZF 3.5/180LH

**CSA rating data**
**UL 1059 rating data**

Rated voltage (Use group D)	300 V
Rated current (Use group D)	10 A
AWG conductor, min.	26
AWG conductor, max.	14

**Approvals**

Approvals institutes


**Classifications**

ETIM 2.0	NK
ETIM 3.0	EC001284
eClass 4.1	27-26-07-01
eClass 5.0	27-26-07-01
eClass 5.1	27-26-07-04

**Similar products**

Order No.	Part designation	Version
1691570000	BLZF 3.5/2/LH SN OR	PCB plug-in connector, Female connectors, Tension clamp connection, Clamping range, max.: 1.5 mm <sup>2</sup> , Pitch: 3.50 mm, No. of poles: 2, 180°, Box
1691800000	BLZF 3.5/2/LH SN SW	PCB plug-in connector, Female connectors, Tension clamp connection, Clamping range, max.: 1.5 mm <sup>2</sup> , Pitch: 3.50 mm, No. of poles: 2, 180°, Box
1691580000	BLZF 3.5/3/LH SN OR	PCB plug-in connector, Female connectors, Tension clamp connection, Clamping range, max.: 1.5 mm <sup>2</sup> , Pitch: 3.50 mm, No. of poles: 3, 180°, Box
1691810000	BLZF 3.5/3/LH SN SW	PCB plug-in connector, Female connectors, Tension clamp connection, Clamping range, max.: 1.5 mm <sup>2</sup> , Pitch: 3.50 mm, No. of poles: 3, 180°, Box
1691590000	BLZF 3.5/4/LH SN OR	PCB plug-in connector, Female connectors, Tension clamp connection, Clamping range, max.: 1.5 mm <sup>2</sup> , Pitch: 3.50 mm, No. of poles: 4, 180°, Box
1691820000	BLZF 3.5/4/LH SN SW	PCB plug-in connector, Female connectors, Tension clamp connection, Clamping range, max.: 1.5 mm <sup>2</sup> , Pitch: 3.50 mm, No. of poles: 4, 180°, Box
1691600000	BLZF 3.5/5/LH SN OR	PCB plug-in connector, Female connectors, Tension clamp connection, Clamping range, max.: 1.5 mm <sup>2</sup> , Pitch: 3.50 mm, No. of poles: 5, 180°, Box
1691830000	BLZF 3.5/5/LH SN SW	PCB plug-in connector, Female connectors, Tension clamp connection, Clamping range, max.: 1.5 mm <sup>2</sup> , Pitch: 3.50 mm, No. of poles: 5, 180°, Box

Product catalogue | PCB connection systems | PCB plug-in connectors | Pitch 3.50 mm (0.138 inch) | Socket connectors, tension clamp connection, pitch 3.5 | BLZF 3.5 | BLZF 3.5/180LH

1691610000	BLZF 3.5/6/LH SN OR	PCB plug-in connector, Female connectors, Tension clamp connection, Clamping range, max.: 1.5 mm <sup>2</sup> , Pitch: 3.50 mm, No. of poles: 6, 180°, Box
1691840000	BLZF 3.5/6/LH SN SW	PCB plug-in connector, Female connectors, Tension clamp connection, Clamping range, max.: 1.5 mm <sup>2</sup> , Pitch: 3.50 mm, No. of poles: 6, 180°, Box
1691620000	BLZF 3.5/7/LH SN OR	PCB plug-in connector, Female connectors, Tension clamp connection, Clamping range, max.: 1.5 mm <sup>2</sup> , Pitch: 3.50 mm, No. of poles: 7, 180°, Box
1691850000	BLZF 3.5/7/LH SN SW	PCB plug-in connector, Female connectors, Tension clamp connection, Clamping range, max.: 1.5 mm <sup>2</sup> , Pitch: 3.50 mm, No. of poles: 7, 180°, Box
1691630000	BLZF 3.5/8/LH SN OR	PCB plug-in connector, Female connectors, Tension clamp connection, Clamping range, max.: 1.5 mm <sup>2</sup> , Pitch: 3.50 mm, No. of poles: 8, 180°, Box
1691860000	BLZF 3.5/8/LH SN SW	PCB plug-in connector, Female connectors, Tension clamp connection, Clamping range, max.: 1.5 mm <sup>2</sup> , Pitch: 3.50 mm, No. of poles: 8, 180°, Box
1691640000	BLZF 3.5/9/LH SN OR	PCB plug-in connector, Female connectors, Tension clamp connection, Clamping range, max.: 1.5 mm <sup>2</sup> , Pitch: 3.50 mm, No. of poles: 9, 180°, Box
1691870000	BLZF 3.5/9/LH SN SW	PCB plug-in connector, Female connectors, Tension clamp connection, Clamping range, max.: 1.5 mm <sup>2</sup> , Pitch: 3.50 mm, No. of poles: 9, 180°, Box
1691650000	BLZF 3.5/10/LH SN OR	PCB plug-in connector, Female connectors, Tension clamp connection, Clamping range, max.: 1.5 mm <sup>2</sup> , Pitch: 3.50 mm, No. of poles: 10, 180°, Box
1691660000	BLZF 3.5/11/LH SN OR	PCB plug-in connector, Female connectors, Tension clamp connection, Clamping range, max.: 1.5 mm <sup>2</sup> , Pitch: 3.50 mm, No. of poles: 11, 180°, Box
1691890000	BLZF 3.5/11/LH SN SW	PCB plug-in connector, Female connectors, Tension clamp connection, Clamping range, max.: 1.5 mm <sup>2</sup> , Pitch: 3.50 mm, No. of poles: 11, 180°, Box
1691670000	BLZF 3.5/12/LH SN OR	PCB plug-in connector, Female connectors, Tension clamp connection, Clamping range, max.: 1.5 mm <sup>2</sup> , Pitch: 3.50 mm, No. of poles: 12, 180°, Box
1691900000	BLZF 3.5/12/LH SN SW	PCB plug-in connector, Female connectors, Tension clamp connection, Clamping range, max.: 1.5 mm <sup>2</sup> , Pitch: 3.50 mm, No. of poles: 12, 180°, Box
1691680000	BLZF 3.5/13/LH SN OR	PCB plug-in connector, Female connectors, Tension clamp connection, Clamping range, max.: 1.5 mm <sup>2</sup> , Pitch: 3.50 mm, No. of poles: 13, 180°, Box
1691910000	BLZF 3.5/13/LH SN SW	PCB plug-in connector, Female connectors, Tension clamp connection, Clamping range, max.: 1.5 mm <sup>2</sup> , Pitch: 3.50 mm, No. of poles: 13, 180°, Box
1691690000	BLZF 3.5/14/LH SN OR	PCB plug-in connector, Female connectors, Tension clamp connection, Clamping range, max.: 1.5 mm <sup>2</sup> , Pitch: 3.50 mm, No. of poles: 14, 180°, Box
1691920000	BLZF 3.5/14/LH SN SW	PCB plug-in connector, Female connectors, Tension clamp connection, Clamping range, max.: 1.5 mm <sup>2</sup> , Pitch: 3.50 mm, No. of poles: 14, 180°, Box

Product catalogue | PCB connection systems | PCB plug-in connectors | Pitch 3.50 mm (0.138 inch) | Socket connectors, tension clamp connection, pitch 3.5 | BLZF 3.5 | BLZF 3.5/180LH

1691700000	BLZF 3.5/15/LH SN OR	PCB plug-in connector, Female connectors, Tension clamp connection, Clamping range, max.: 1.5 mm <sup>2</sup> , Pitch: 3.50 mm, No. of poles: 15, 180°, Box
1691930000	BLZF 3.5/15/LH SN SW	PCB plug-in connector, Female connectors, Tension clamp connection, Clamping range, max.: 1.5 mm <sup>2</sup> , Pitch: 3.50 mm, No. of poles: 15, 180°, Box
1691710000	BLZF 3.5/16/LH SN OR	PCB plug-in connector, Female connectors, Tension clamp connection, Clamping range, max.: 1.5 mm <sup>2</sup> , Pitch: 3.50 mm, No. of poles: 16, 180°, Box
1691940000	BLZF 3.5/16/LH SN SW	PCB plug-in connector, Female connectors, Tension clamp connection, Clamping range, max.: 1.5 mm <sup>2</sup> , Pitch: 3.50 mm, No. of poles: 16, 180°, Box
1691720000	BLZF 3.5/17/LH SN OR	PCB plug-in connector, Female connectors, Tension clamp connection, Clamping range, max.: 1.5 mm <sup>2</sup> , Pitch: 3.50 mm, No. of poles: 17, 180°, Box
1691950000	BLZF 3.5/17/LH SN SW	PCB plug-in connector, Female connectors, Tension clamp connection, Clamping range, max.: 1.5 mm <sup>2</sup> , Pitch: 3.50 mm, No. of poles: 17, 180°, Box
1691730000	BLZF 3.5/18/LH SN OR	PCB plug-in connector, Female connectors, Tension clamp connection, Clamping range, max.: 1.5 mm <sup>2</sup> , Pitch: 3.50 mm, No. of poles: 18, 180°, Box
1691960000	BLZF 3.5/18/LH SN SW	PCB plug-in connector, Female connectors, Tension clamp connection, Clamping range, max.: 1.5 mm <sup>2</sup> , Pitch: 3.50 mm, No. of poles: 18, 180°, Box
1691740000	BLZF 3.5/19/LH SN OR	PCB plug-in connector, Female connectors, Tension clamp connection, Clamping range, max.: 1.5 mm <sup>2</sup> , Pitch: 3.50 mm, No. of poles: 19, 180°, Box
1691970000	BLZF 3.5/19/LH SN SW	PCB plug-in connector, Female connectors, Tension clamp connection, Clamping range, max.: 1.5 mm <sup>2</sup> , Pitch: 3.50 mm, No. of poles: 19, 180°, Box
1691750000	BLZF 3.5/20/LH SN OR	PCB plug-in connector, Female connectors, Tension clamp connection, Clamping range, max.: 1.5 mm <sup>2</sup> , Pitch: 3.50 mm, No. of poles: 20, 180°, Box
1691980000	BLZF 3.5/20/LH SN SW	PCB plug-in connector, Female connectors, Tension clamp connection, Clamping range, max.: 1.5 mm <sup>2</sup> , Pitch: 3.50 mm, No. of poles: 20, 180°, Box
1691760000	BLZF 3.5/21/LH SN OR	PCB plug-in connector, Female connectors, Tension clamp connection, Clamping range, max.: 1.5 mm <sup>2</sup> , Pitch: 3.50 mm, No. of poles: 21, 180°, Box
1691990000	BLZF 3.5/21/LH SN SW	PCB plug-in connector, Female connectors, Tension clamp connection, Clamping range, max.: 1.5 mm <sup>2</sup> , Pitch: 3.50 mm, No. of poles: 21, 180°, Box
1691770000	BLZF 3.5/22/LH SN OR	PCB plug-in connector, Female connectors, Tension clamp connection, Clamping range, max.: 1.5 mm <sup>2</sup> , Pitch: 3.50 mm, No. of poles: 22, 180°, Box
1692000000	BLZF 3.5/22/LH SN SW	PCB plug-in connector, Female connectors, Tension clamp connection, Clamping range, max.: 1.5 mm <sup>2</sup> , Pitch: 3.50 mm, No. of poles: 22, 180°, Box
1691780000	BLZF 3.5/23/LH SN OR	PCB plug-in connector, Female connectors, Tension clamp connection, Clamping range, max.: 1.5 mm <sup>2</sup> , Pitch: 3.50 mm, No. of poles: 23, 180°, Box

Product catalogue | PCB connection systems | PCB plug-in connectors | Pitch 3.50 mm (0.138 inch) | Socket connectors, tension clamp connection, pitch 3.5 | BLZF 3.5 | BLZF 3.5/180LH

1692010000	BLZF 3.5/23/LH SN SW	PCB plug-in connector, Female connectors, Tension clamp connection, Clamping range, max.: 1.5 mm <sup>2</sup> , Pitch: 3.50 mm, No. of poles: 23, 180°, Box
1691790000	BLZF 3.5/24/LH SN OR	PCB plug-in connector, Female connectors, Tension clamp connection, Clamping range, max.: 1.5 mm <sup>2</sup> , Pitch: 3.50 mm, No. of poles: 24, 180°, Box
1692020000	BLZF 3.5/24/LH SN SW	PCB plug-in connector, Female connectors, Tension clamp connection, Clamping range, max.: 1.5 mm <sup>2</sup> , Pitch: 3.50 mm, No. of poles: 24, 180°, Box