

Excellent Integrated System Limited

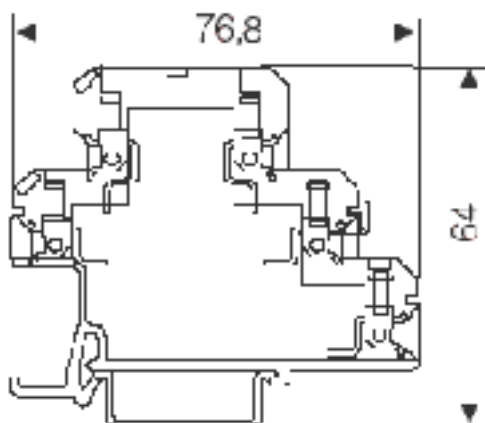
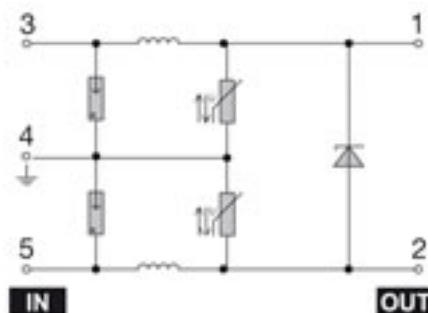
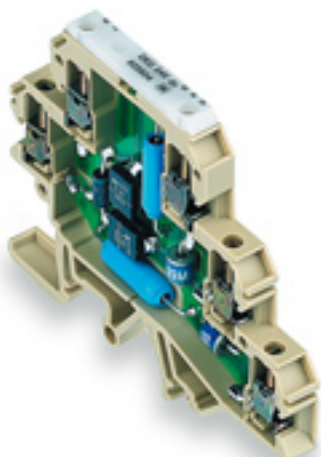
Stocking Distributor

Click to view price, real time Inventory, Delivery & Lifecycle Information:

[Weidmüller](#)
[8238340000](#)

For any questions, you can email us directly:

sales@integrated-circuit.com



General ordering data

Order No.	8238340000
Part designation	DKU DK5 24VDC 0,3A
Version	Surge protection for instrumentation and control, {Reference (AttributeDefinition) not found: pattr2500833906422}, Rated voltage: 24 V DC
EAN	4008190425456
Qty.	10 pc(s).

Clamped conductors

Flexible w. ferrule, min. (DIN 46228-1)	0.5 mm ²
Flexible, max.	4 mm ²
Flexible, min.	0.5 mm ²
Rated cross-section for solid/flexible with ferrule	2.5 mm ²
Rated cross-section, max. ferrules	4 mm ²
Solid, min.	0.5 mm ²
Stranded, max.	4 mm ²
Stranded, min.	0.5 mm ²
Tightening torque range	0.4...0.6 Nm
Type of connection	Screw connection

Clamped conductors

General data

Design	Terminal
Storage temperature	-25 ... 85°C
Ambient temperature (operational)	-25 ... 60°C

Insulation coordination acc. to EN 50178

Overvoltage category	III
Pollution severity	2

Interference voltage

Protection level on output side sym., input 1 kV/ µs, typ.	30 V
Protection level on output side sym., input 8/20 µs, typ.	45 V
Protection level on output side unsym., input 1kV/ µs, typ.	35 V
Protection level on output side unsym., input 8/20 µs, typ.	45 V

Technical data

Limiting frequency (-3 dB) at load resistance	400 kHz 240 Ω
Rated voltage (DC), max.	28 V
Volume resistance	3 Ω
Rated current	0.3 A
Rated voltage	24 V DC
Rated voltage (DC)	24 V
Max. continuous voltage, U _c (AC)	28 V
Operating current, I _{max}	0.3 A
Discharge current, max. (8/20 µs)	5 kA
Sparkover time	≤ 100 ps
Fuse, max.	0.5 A

Dimensions

Clamping range, max.	4 mm ²
Clamping range, nom.	4 mm ²
Length	76.8 mm
Height	72 mm
Width	6 mm

Approvals

Approvals institutes



Classifications

ETIM 2.0	EC000943
ETIM 3.0	EC000943
eClass 4.1	27-14-11-27

Classifications

eClass 5.0	27-14-11-27
eClass 5.1	27-14-11-27

Similar products

Order No.	Part designation	Version
8015800000	DKU 32 24VDC In:0,22A	Surge protection for instrumentation and control, {Reference (AttributeDefinition) not found: pattr2500833906422}, Rated voltage: 24 V DC
8015810000	DKU 35 24VDC In:0,22A	Surge protection for instrumentation and control, {Reference (AttributeDefinition) not found: pattr2500833906422}, Rated voltage: 24 V DC
8019330000	DKU 35 230VUC 0,3A	Surge protection for instrumentation and control, {Reference (AttributeDefinition) not found: pattr2500833906422}, Rated voltage: 230 V
8262470000	DKU DK5 48VUC 0,3A	Surge protection for instrumentation and control, {Reference (AttributeDefinition) not found: pattr2500833906422}, Rated voltage: 48 V