

Excellent Integrated System Limited

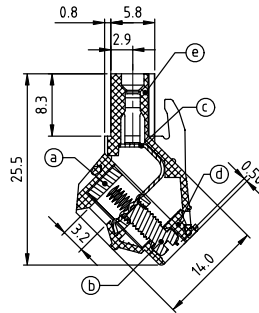
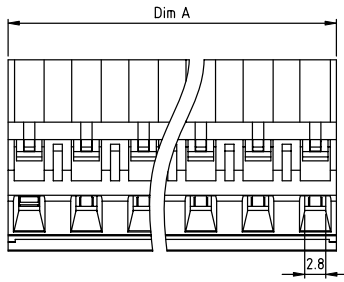
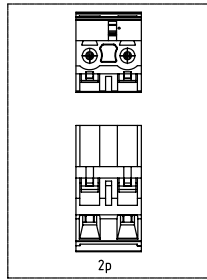
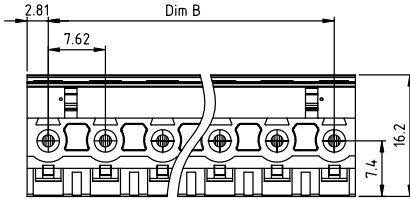
Stocking Distributor

Click to view price, real time Inventory, Delivery & Lifecycle Information:

[FCI](#)
[EM02015000JOG](#)

For any questions, you can email us directly:
sales@integrated-circuit.com

PRODUCT NUMBER	PITCH
EMxx01x000J0G	7.62 mm



Material:

- Item (a) Clamp: Brass(CuZn) Ni plated
- Item (b) Terminal screw: Steel Zinc plating "-" slot type
- Item (c) Female contact: High conductivity copper, Tin plated
- Item (d) Terminal (top body): Thermoplastic (UL94V-0)
- Item (e) Terminal (bottom body): Thermoplastic (UL94V-0)

Electrical cULus

- Voltage rating: 300VAC
- Current rating: 20A
- Wire range:
- Solid wire(AWG): 12-22
- Stranded wire(AWG): 12-22
- Torque: 4 Lb-In
- Screw: M3
- Wire strip length: 7-8mm
- Withstanding Voltage: 1.6KV
- Operating temperature: -40°C to +115°C
- Safety Approval:

PART NO.: EM xx 01 x 0 00J0 G

Dim A=(N-1)×7.62+5.62
Dim B=(N-1)×7.62
N=Number of poles

POLES	Tolerance
2p-6p	±0.20
7p-12p	±0.30
13p-16p	±0.40

Solid block	No. of poles	Color	RoHS compliant (lead<4%) In copper Alloy
0	2	Black (RAL9005)	
02	3	Red (RAL3001/D)	
03	4	Orange(RAL2011/P)	
...	5	Yellow(RAL1018/A)	
...	6	Green(RAL6018/T)	
...	8	Blue (RAL5015/A)	
...	9	Grey(RAL7035/D)	
...	9	White(RAL1102)	
...	16	Green(RAL6018/U)	

mat'l. code	surface ASME Y14.5	tolerance ASME Y14.5	projection 	product family TERMINAL BLOCK
itr	ecn	no	dr	date
tolerances unless otherwise specified				title TERMINAL BLOCK PLUGGABLE PLUG,WITHOUT FLANGE
angles	X.±0.5		MM	scale
X'±1'	X.X±0.3			dwg no
	X.XX±0.1			sheet 1 of 1
dr	EVIN ZHONG	042114		size A4
enr	EVIN ZHONG	042114		EMxx01x000J0G
chr	HANKE FENG	042114		type CUSTOMER Drawing
appd	SHI JUN	042114		
sheet index	revision sheet	A 1		