

Excellent Integrated System Limited

Stocking Distributor

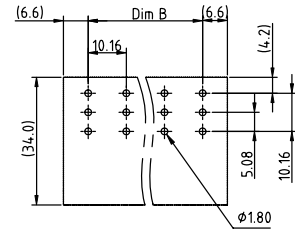
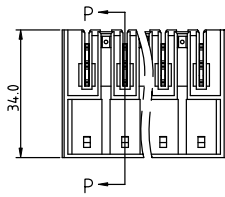
Click to view price, real time Inventory, Delivery & Lifecycle Information:

[FCI](#)
[EW02615200J0G](#)

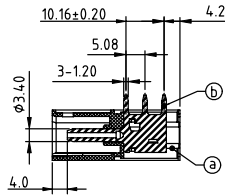
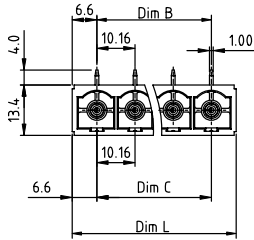
For any questions, you can email us directly:

sales@integrated-circuit.com

PRODUCT NUMBER	PITCH
EWxx61x200J0G	10.16 mm



RECOMMENDED P.C.B. LAYOUT
TOP VIEW



SECTION P-P

Material:

- Item① Terminal(housing):Thermoplastic(UL 94 - V0)
- Item② Male contact pin: Copper Gold plated

Electrical:

- cULus
- Voltage rating: 300V
- Current rating: 55A
- Withstanding Voltage: 1.6 KV
- Operating temperature: -40°C to +115°C
- Soldering temperature: 260°C±5°C/5 Sec
- Safety Approval: cULus

DIMENSION

Dim L	$N \times 10.16 \pm 3.04$
Dim B	$(N-1) \times 10.16$
Dim C	$(N-1) \times 10.16$

N=Number of contacts

Poles	Tolerance
2p-5p	±0.25
6p-8p	±0.35
9p-12p	±0.45

PART NO.: EW xx 61 x 2 00J0 G

Solid block	No. of poles	Color	RoHS compliant (lead<4%) In copper Alloy
0	2	Black (RAL9005)	
2	3	Red (RAL3001/D)	
3	4	Orange(RAL2011/P)	
4	5	Yellow(RAL1018/A)	
5	6	Green(RAL6018/T)	
6	8	Blue (RAL5015/A)	
8	9	Grey(RAL7035/D)	
9	12	White(RAL1102)	
C		Green(RAL6018/U)	

mat'l. code	surface ASME Y14.5	tolerance ASME Y14.5	projection	product family TERMINAL BLOCK
ltr	ecn no	dr	date	title TERMINAL BLOCK
tolerances unless otherwise specified				PLUGGABLE SOCKET,PCB UP,CLOSE RIGHT ANGLE
angles	X.±0.5		MM	scale
X'±1'	X.X±0.3			dr
	X.XX±0.1			enrg
				chr
				appd
sheet index	revision sheet	A	1	type CUSTOMER Drawing