

Excellent Integrated System Limited

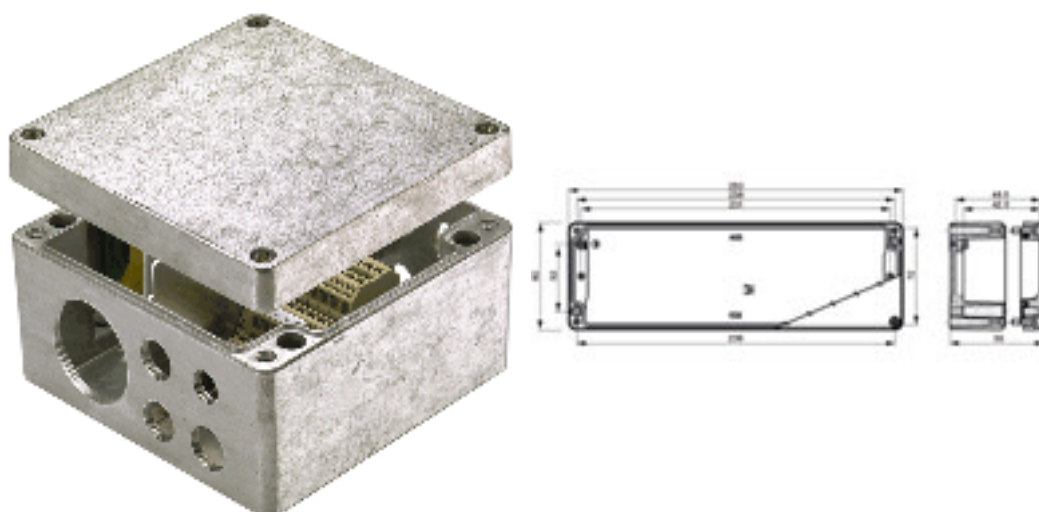
Stocking Distributor

Click to view price, real time Inventory, Delivery & Lifecycle Information:

[Weidmüller](#)
[1565260000](#)

For any questions, you can email us directly:

sales@integrated-circuit.com



General ordering data

Order No.	1565260000
Part designation	KLIPPON K32
Version	Housings, 55 mm, 80 mm, 250 mm, Aluminium alloy (AlSi12)
EAN	4008190188528
Qty.	5 pc(s).

Dimensions

Fixing dimension, width	238 mm
Height	55 mm
Length	80 mm
Width	250 mm

General details

Cover fixing	4 stainless steel M4 screws
Enclosure fixing	Holes 4 mm
Integral fixing	Threaded holes M4
Resistance to shocks	10 J
Sealing material	Neoprene
Version cover	closed
Surface finish	untreated
Class of protection to EN 60529	IP 66 and IP 67
Weight	710 g
Ambient temperature, min.	-30 °C
Ambient temperature, max.	80 °C

Screwed cable glands top/bottom

M 12	15
M 16	9
M 20	7
M 25	6
Side of enclosure	Top / Bottom

Screwed cable glands, left/right

M12	2
M16	2
M20	1
On housing side	left / right

Approvals

Approvals institutes



Classifications

ETIM 2.0	EC000058
ETIM 3.0	EC000058
eClass 4.1	27-14-12-06
eClass 5.0	27-14-91-07
eClass 5.1	27-14-91-07

Similar products

Order No.	Part designation	Version
9529180000	KLIPPON K32 RAL7001	Housings, 55 mm, 80 mm, 250 mm, Aluminium alloy (AlSi12)