

## Excellent Integrated System Limited

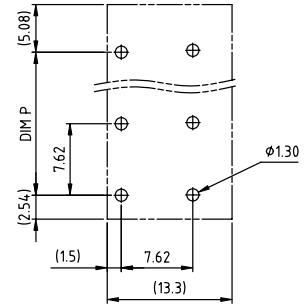
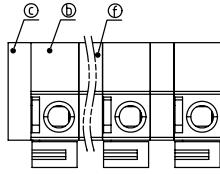
Stocking Distributor

Click to view price, real time Inventory, Delivery & Lifecycle Information:

[FCI](#)  
[HA02205000J0G](#)

For any questions, you can email us directly:  
[sales@integrated-circuit.com](mailto:sales@integrated-circuit.com)

PRODUCT NUMBER	PITCH
HAxx20x000J0G	7.62 mm



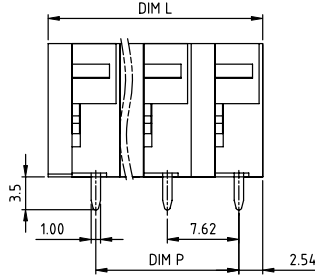
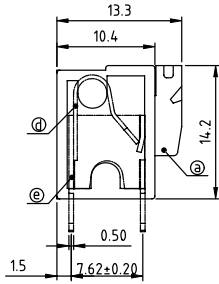
RECOMMENDED P.C.B. LAYOUT  
TOP VIEW

Material:

- Item① Lever: Thermoplastic (UL94V-0) Orange RAL2011/P
- Item② Terminal body: Thermoplastic (UL94V-0)
- Item③ cover: Thermoplastic (UL94V-0)
- Item④ Spring clamp: Stainless steel
- Item⑤ Pin: Brass Tin plated
- Item⑥ Pad board: Thermoplastic (UL94V-0)

Electrical

- cULus/VDE
- Voltage rating: 300VAC/450VAC
- Current rating: 10A/10A
- Wire range: 0.75-1.5mm<sup>2</sup>
- Solid wire(AWG): 14-24
- Stranded wire(AWG): 14-24
- Pull force:
- Screw:
- Wire strip length: 9-10mm
- Withstanding Voltage: 1.6KV/2.5KV
- Operating temperature: -40°C to +115°C
- Soldering temperature: 260°C±5°C/5 Sec
- Safety Approval: cULus VDE



N=Number of poles  
Dim L=Nx7.62  
Dim P=(N-1)x7.62

Poles	Dim L	Dim P
2-6p	±0.20	±0.20
7-12p	±0.30	±0.25
13-16p	±0.40	±0.30

PART NO.: HA xx 20 x 0 00J0 G

- |                 |                     |                 |
|-----------------|---------------------|-----------------|
| End stackable 0 | Color               | RoHS compliant  |
| No. of poles 2  | Black (RAL9005)     | (lead<4%)       |
| 02 2 poles      | Red (RAL3001/D)     | In copper Alloy |
| 03 3 poles      | Orange(RAL2011/P)   |                 |
| ...             | 4 Yellow(RAL1018/A) |                 |
| 16 16 poles     | 5 Green(RAL6018/T)  |                 |
|                 | 6 Blue (RAL5015/A)  |                 |
|                 | 8 Grey(RAL7004/P)   |                 |
|                 | 9 White(RAL1102)    |                 |
|                 | C Multiple colors   |                 |

mat'l. code	surface ASME Y14.5	tolerance ASME Y14.5	projection	product family
ltr	ecn no	dr	date	TERMINAL BLOCK
tolerances unless otherwise specified				title
angles				TERMINAL BLOCK
X±0.5				SPRING CLAMP,90D WIRE INLET
X.X±0.3				dwg no
X'±1'				X.XX±0.1
scale				sheet 1 of 1
dr	EVIN ZHONG	052314	FCI	size
enfr	EVIN ZHONG	052314		A4
chr	HANKE FENG	052314		
appd	SHI JUN	052314		
sheet index	revision sheet	A 1		type
				CUSTOMER Drawing