

Excellent Integrated System Limited

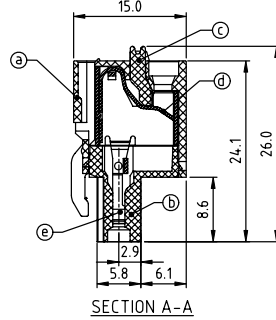
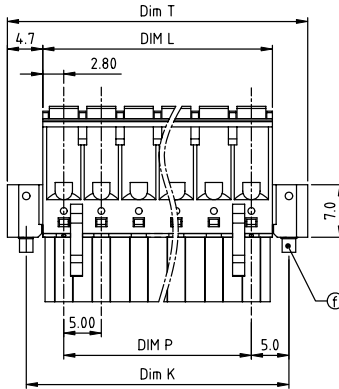
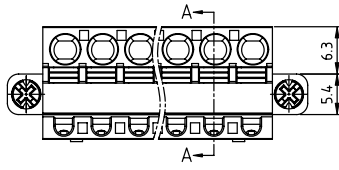
Stocking Distributor

Click to view price, real time Inventory, Delivery & Lifecycle Information:

[FCI](#)
[HW02705300J0G](#)

For any questions, you can email us directly:
sales@integrated-circuit.com

PRODUCT NUMBER	PITCH
HWxx70x300J0G	5.00 mm



Material:

- Ltem(a) Top body: Thermoplastic (UL94V-0)
- Ltem(b) Bottom body: Thermoplastic (UL94V-0)
- Ltem(c) Terminal lever: Thermoplastic (UL94V-0), Orange (RAL2001/P)
- Ltem(d) Spring clamp: Stainless Steel
- Ltem(e) Female contact: PhBz (CuSn) Tin plated
- Ltem(f) Flange screw: Steel " + / - " combination type Zinc plating M2.5

Electrical

- Voltage rating: 300V
- Current rating: 10A
- Solid wire(AWG): 12-26
- Stranded wire(AWG): 12-26
- Wire strip length: 9-10mm
- Withstanding Voltage: 1.6KV
- Operating temperature: -40°C to +115°C
- Safety Approval: cULus

N = Number of poles
Dim L = N x 5.0 + 0.6
Dim P = (N-1) x 5.0
Dim T = N x 5.0 + 10.62
Dim K = (N+1) x 5.0

PART NO.: HW xx 7 0 x 3 00J0 G

- | | | | |
|--------------|-----|----------|---|
| Solid block | 0 | Color | RoHS compliant (lead<4%)
In copper Alloy |
| No. of poles | 02 | 2 poles | Black (RAL9005) |
| | 03 | 3 poles | Red (RAL3001/D) |
| | ... | ... | Orange (RAL2011/P) |
| | ... | ... | Yellow (RAL1018/A) |
| | ... | ... | Green (RAL6018/T) |
| | 24 | 24 poles | Blue (RAL5015/A) |
| | | | Grey (RAL7035/D) |
| | | | White (RAL1102) |
| | | | Green (RAL6018/U) |

mat'l. code	surface ASME Y14.5	tolerance ASME Y14.5	projection	product family TERMINAL BLOCK
ltr	ecn	no	dr	date
tolerances unless otherwise specified				title TERMINAL BLOCK SPRING CLAMP PLUGGABLE PLUG, WITH FLANGE CONTACT ON UP SIDE
angles	X.±0.5			
X'±1"	X.X±0.3			
	X.XX±0.1			
dr	EVIN ZHONG	051514	scale	MM
engr	EVIN ZHONG	051514	FCI	dwg no
chr	HANKE FENG	051514		sheet 1 of 1
appr	SHI JUN	051514		size A4
sheet index	revision sheet	A		type CUSTOMER Drawing
		1		

form: A4mmXLc

1

2

PDS: Rev :A 3

STATUS:Released

Printed: Jul 23, 2014