

Excellent Integrated System Limited

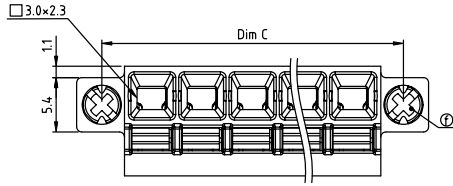
Stocking Distributor

Click to view price, real time Inventory, Delivery & Lifecycle Information:

[FCI](#)
[KD02705100J0G](#)

For any questions, you can email us directly:
sales@integrated-circuit.com

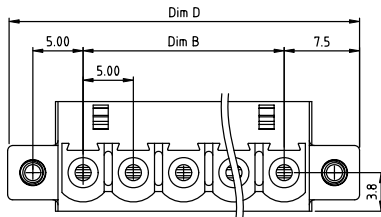
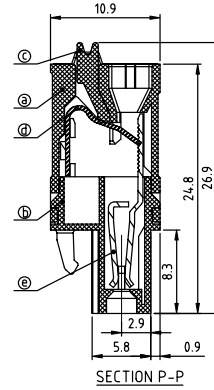
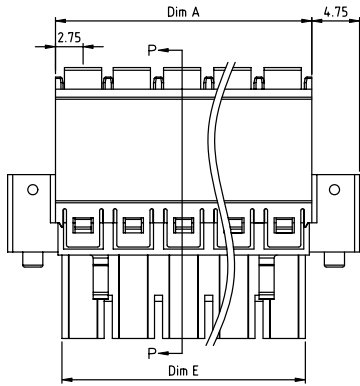
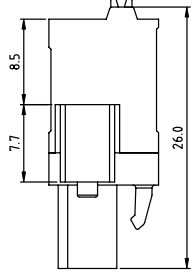
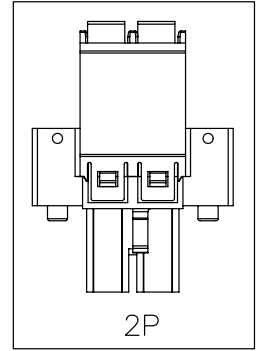
PRODUCT NUMBER	PITCH
KDxx70x100JOG	5.00 mm



DIM A	Nx5.0±0.50
DIM B	(N-1)x5.0
DIM C	(N-1)x5.0±10.00
DIM D	(N-1)x5.0±15.0
DIM E	(N-1)x5.0±4.20
N=Number of poles	
POLES	Tolerance
2p-6p	±0.15
7p-12p	±0.25
13p-18p	±0.35
19p-24p	±0.40

PART NO.: KD xx 7 0 x 1 00J O G

Solid block	0	Color	0	Black (RAL9005)	RoHS compliant
No. of poles	02		2	Red (RAL3001/D)	(lead-4%)
...	...		3	Orange(RAL2011/P)	In copper Alloy
03	3 poles		4	Yellow(RAL1018/A)	
...	...		5	Green(RAL6018/T)	
24	24 poles		6	Blue (RAL5015/A)	
			8	Grey(RAL7035/D)	
			9	White(RAL1102)	
			C	Green(RAL6018/U)	



- Material:
- Item① Top body: Thermoplastic (UL94V-0)
 - Item② Bottom body: Thermoplastic (UL94V-0)
 - Item③ Terminal Lever: Thermoplastic (UL94V-0) Orange(RAL2001/P)
 - Item④ Spring clamp: Stainless steel
 - Item⑤ Female contact: PhBz Tin Plated
 - Item⑥ Flange screw: Steel Zinc plating M2.5*+/- combination type

- Electrical:
- Voltage rating: 300 V
 - Current rating: 12 A
 - Wire range:
 - Solid wire(AWG): 14-24
 - Stranded wire(AWG): 14-24
 - Wire strip length: 11-12 mm
 - Withstanding Voltage: 1.6 KV
 - Operating temperature: -40°C to +115°C
 - Safety Approval: cULus

mat'l. code	surface	tolerance	projection	product family
	ASME Y14.5	ASME Y14.5		TERMINAL BLOCK
ltr	ecn	no	dr	date
tolerances unless otherwise specified				
	angles	X.±0.5		
	mm	X.X±0.3		
	X'±1"	X.XX±0.1		
	dr	EVIN ZHONG	052014	
	enr	EVIN ZHONG	052014	
	chr	HANKE FENG	052014	
	appd	SHI JUN	052014	
sheet	revision	A		
index	sheet	1		
				title
				TERMINAL BLOCK
				SPRING CLAMP, PLUGGABLE PLUG, WITH FLANGE
				dwg no
				sheet 1 of 1
				size
				A4
				KDxx70x100JOG
				type
				CUSTOMER Drawing