

Excellent Integrated System Limited

Stocking Distributor

Click to view price, real time Inventory, Delivery & Lifecycle Information:

[Bivar, Inc.](#)
[ELM5480R5BWD](#)

For any questions, you can email us directly:
sales@integrated-circuit.com



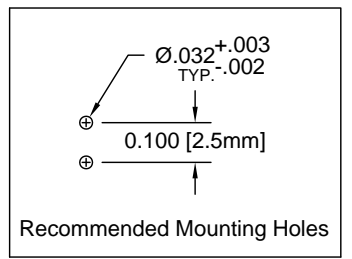
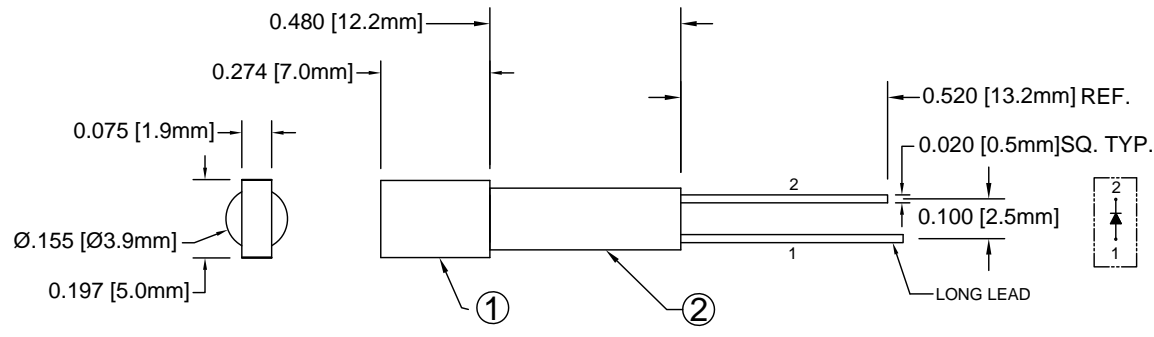
Distributor of Bivar, Inc.: Excellent Integrated System Limited

Datasheet of ELM5480R5BWD - LED ASSY 0.480" 2X5 BLU DIFF 2LD

Contact us: sales@integrated-circuit.com Website: www.integrated-circuit.com

ITEM	QTY	PART NUMBER	PART DESCRIPTION
1	1	R5BWD	2 x 5mm Rectangular LED
2	1	ELM 5-480	Extruded, Self-Retaining Narrow LED Spacer

REV.	DESCRIPTION	DATE	APPROVED
A	Engineering Release.	04/02/10	T. Y.
B	Engineering Update w/o Changes.	05/25/16	J. C.



Chip			Lens Appearance	Absolute Max. Ratings			Electro-Optical Data @ 20mA			Viewing Angle 2 θ ½ (Deg)
Emitted Color	Peak Wave Length λp(nm)	Material		Pd (mW)	If (mA)	Peak If(mA)	Vf (V)		Iv (mcd)	
							TYP	MAX	TYP	
BLUE	430	GaN/SiC	150	25	70	4.0	4.5	4	120	

ABSOLUTE MAXIMUM RATINGS (Ta=25°C)

- REVERSE VOLTAGE _____ 5V
- REVERSE CURRENT _____ 100µA
- OPERATING TEMPERATURE RANGE _____ -25° C - 85° C
- STORAGE TEMPERATURE _____ -30° C - 100° C
- LEAD SOLDERING TEMPERATURE(1/16" FROM BODY) _____ 260° C FOR 5 SECONDS

STANDARD TOLERANCE (UNLESS OTHERWISE SPECIFIED)		 4 THOMAS, IRVINE, CA. 92618 TEL: (949) 951-8808 FAX: (949) 951-3974
DECIMALS	ANGULAR	
.X ±.1	X° ±1°	
.XX ±.02		TITLE: EXTRUDED VERTICAL RCT 2X5 LED NARROW SPACER PROFILE ASSY
.XXX ±.010		
DESIGNED: R. Paje	DATE: 04/02/10	PART NO: ELM5480R5BWD REVISION: B
CHECKED: T. Yin	DATE: 04/02/10	CAGE CODE: 32559 SHEET # 1 OF 1 <small>CAD GENERATED DOCUMENT, DO NOT MEASURE DRAWING.</small>