

Excellent Integrated System Limited

Stocking Distributor

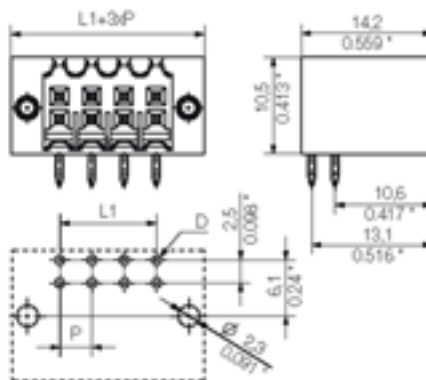
Click to view price, real time Inventory, Delivery & Lifecycle Information:

[Weidmüller](#)
[1756100000](#)

For any questions, you can email us directly:

sales@integrated-circuit.com

Product catalogue | PCB connection systems | PCB plug-in connectors | Pitch 3.50 mm (0.138 inch) 2-row | Solder-connection pin headers | S2L 3.5/90 | S2L 3.5/90F


General ordering data

Order No.	1756100000
Part designation	S2L 3.5/26/90F 3.5AU OR
Version	PCB plug-in connector, Male connectors, Soldered connection, Pitch: 3.50 mm, No. of poles: 26, 90°, Box
EAN	4032248041893
Qty.	20 pc(s).

System parameters

Fitted to PCB	Soldered connection
Outgoing elbow	90°
Pitch	3.5 mm
Pitch in inch	0.138 inch
No. of poles	26
Solder pin length	3.5 mm
Can be coded	Yes
No. of rows	2
No. of solder pins per pole	1
Dia. of fitting hole	1.3 mm
Fitting hole tolerance	+ 0.1 mm
L1 in mm	42 mm
L1 in inch	1.654 inch
Electric shock protection to DIN VDE 0470	IP 10
Electric shock protection to DIN VDE 0470	Safe from back-of-hand touch

Material data

Insulating material	PBT
Colour	orange
colour chart	Similar to RAL 2000
Insulating material group	IIIa
Flammability class UL 94	V-0
CTI	>= 200
Contact base material	Copper alloy
Contact surface	gold-plated

Material data

Constant operating temp., min.	-25 °C
Constant operating temp., max.	100
Storage temperature, min.	-25 °C
Storage temperature, max.	55 °C
Max. relative humidity during storage	93 %

DIN IEC rating data

Rated current, min. No. pins (Tu=20°C)	10 A
Rated current, max. No. pins (Tu=20°C)	10 A
Rated current, min. No. pins (Tu=40°C)	9 A
Rated current, max. No. pins (Tu=40°C)	8.5 A
Rated voltage for overvoltage class/pollution severity III/3	80 V
Rated impulse withstand voltage for overvoltage class/pollution severity III/3	2.5 kV
Rated voltage for overvoltage class/pollution severity III/2	125 V
Rated impulse withstand voltage for overvoltage class/pollution severity III/2	2.5 kV
Rated voltage for overvoltage class/pollution severity II/2	250 V
Rated impulse withstand voltage for overvoltage class/pollution severity II/2	2.5 kV
Short-time withstand current resistance	3 x 1s with 77 A

CSA rating data

Rated voltage (Use group D)	50 V
Rated current (Use group D)	5 A

UL 1059 rating data

Rated voltage (Use group D)	150 V
Rated current (Use group D)	7 A

Approvals

Approvals institutes


Downloads

CAD Library (P-CAD Format - Standard)	S2L-SMT.LIB
---------------------------------------	-------------

Classifications

ETIM 2.0	NK
ETIM 3.0	EC001284
eClass 4.1	27-26-07-01
eClass 5.0	27-26-07-01
eClass 5.1	27-26-07-01

Similar products

Order No.	Part designation	Version
1728470000	S2L 3.5/6/90F 3.5SN OR	PCB plug-in connector, Male connectors, Soldered connection, Pitch: 3.50 mm, No. of poles: 6, 90°, Box
1728630000	S2L 3.5/6/90F 3.5SN SW	PCB plug-in connector, Male connectors, Soldered connection, Pitch: 3.50 mm, No. of poles: 6, 90°, Box
1756000000	S2L 3.5/6/90F 3.5AU OR	PCB plug-in connector, Male connectors, Soldered connection, Pitch: 3.50 mm, No. of poles: 6, 90°, Box
1756160000	S2L 3.5/6/90F 3.5AU SW	PCB plug-in connector, Male connectors, Soldered connection, Pitch: 3.50 mm, No. of poles: 6, 90°, Box
1728480000	S2L 3.5/8/90F 3.5SN OR	PCB plug-in connector, Male connectors, Soldered connection, Pitch: 3.50 mm, No. of poles: 8, 90°, Box
1728640000	S2L 3.5/8/90F 3.5SN SW	PCB plug-in connector, Male connectors, Soldered connection, Pitch: 3.50 mm, No. of poles: 8, 90°, Box
1756010000	S2L 3.5/8/90F 3.5AU OR	PCB plug-in connector, Male connectors, Soldered connection, Pitch: 3.50 mm, No. of poles: 8, 90°, Box
1728490000	S2L 3.5/10/90F 3.5SN OR	PCB plug-in connector, Male connectors, Soldered connection, Pitch: 3.50 mm, No. of poles: 10, 90°, Box
1728650000	S2L 3.5/10/90F 3.5SN SW	PCB plug-in connector, Male connectors, Soldered connection, Pitch: 3.50 mm, No. of poles: 10, 90°, Box
1756020000	S2L 3.5/10/90F 3.5AU OR	PCB plug-in connector, Male connectors, Soldered connection, Pitch: 3.50 mm, No. of poles: 10, 90°, Box
1756180000	S2L 3.5/10/90F 3.5AU SW	PCB plug-in connector, Male connectors, Soldered connection, Pitch: 3.50 mm, No. of poles: 10, 90°, Box
1728500000	S2L 3.5/12/90F 3.5SN OR	PCB plug-in connector, Male connectors, Soldered connection, Pitch: 3.50 mm, No. of poles: 12, 90°, Box
1728660000	S2L 3.5/12/90F 3.5SN SW	PCB plug-in connector, Male connectors, Soldered connection, Pitch: 3.50 mm, No. of poles: 12, 90°, Box
1756190000	S2L 3.5/12/90F 3.5AU SW	PCB plug-in connector, Male connectors, Soldered connection, Pitch: 3.50 mm, No. of poles: 12, 90°, Box
1728510000	S2L 3.5/14/90F 3.5SN OR	PCB plug-in connector, Male connectors, Soldered connection, Pitch: 3.50 mm, No. of poles: 14, 90°, Box
1728670000	S2L 3.5/14/90F 3.5SN SW	PCB plug-in connector, Male connectors, Soldered connection, Pitch: 3.50 mm, No. of poles: 14, 90°, Box
1728520000	S2L 3.5/16/90F 3.5SN OR	PCB plug-in connector, Male connectors, Soldered connection, Pitch: 3.50 mm, No. of poles: 16, 90°, Box
1728680000	S2L 3.5/16/90F 3.5SN SW	PCB plug-in connector, Male connectors, Soldered connection, Pitch: 3.50 mm, No. of poles: 16, 90°, Box
1756050000	S2L 3.5/16/90F 3.5AU OR	PCB plug-in connector, Male connectors, Soldered connection, Pitch: 3.50 mm, No. of poles: 16, 90°, Box
1756210000	S2L 3.5/16/90F 3.5AU SW	PCB plug-in connector, Male connectors, Soldered connection, Pitch: 3.50 mm, No. of poles: 16, 90°, Box
1728530000	S2L 3.5/18/90F 3.5SN OR	PCB plug-in connector, Male connectors, Soldered connection, Pitch: 3.50 mm, No. of poles: 18, 90°, Box
1728690000	S2L 3.5/18/90F 3.5SN SW	PCB plug-in connector, Male connectors, Soldered connection, Pitch: 3.50 mm, No. of poles: 18, 90°, Box
1756060000	S2L 3.5/18/90F 3.5AU OR	PCB plug-in connector, Male connectors, Soldered connection, Pitch: 3.50 mm, No. of poles: 18, 90°, Box
1728540000	S2L 3.5/20/90F 3.5SN OR	PCB plug-in connector, Male connectors, Soldered connection, Pitch: 3.50 mm, No. of poles: 20, 90°, Box

1728700000	S2L 3.5/20/90F 3.5SN SW	PCB plug-in connector, Male connectors, Soldered connection, Pitch: 3.50 mm, No. of poles: 20, 90°, Box
1756070000	S2L 3.5/20/90F 3.5AU OR	PCB plug-in connector, Male connectors, Soldered connection, Pitch: 3.50 mm, No. of poles: 20, 90°, Box
1756230000	S2L 3.5/20/90F 3.5AU SW	PCB plug-in connector, Male connectors, Soldered connection, Pitch: 3.50 mm, No. of poles: 20, 90°, Box
1728550000	S2L 3.5/22/90F 3.5SN OR	PCB plug-in connector, Male connectors, Soldered connection, Pitch: 3.50 mm, No. of poles: 22, 90°, Box
1756240000	S2L 3.5/22/90F 3.5AU SW	PCB plug-in connector, Male connectors, Soldered connection, Pitch: 3.50 mm, No. of poles: 22, 90°, Box
1728560000	S2L 3.5/24/90F 3.5SN OR	PCB plug-in connector, Male connectors, Soldered connection, Pitch: 3.50 mm, No. of poles: 24, 90°, Box
1728720000	S2L 3.5/24/90F 3.5SN SW	PCB plug-in connector, Male connectors, Soldered connection, Pitch: 3.50 mm, No. of poles: 24, 90°, Box
1756090000	S2L 3.5/24/90F 3.5AU OR	PCB plug-in connector, Male connectors, Soldered connection, Pitch: 3.50 mm, No. of poles: 24, 90°, Box
1756250000	S2L 3.5/24/90F 3.5AU SW	PCB plug-in connector, Male connectors, Soldered connection, Pitch: 3.50 mm, No. of poles: 24, 90°, Box
1728570000	S2L 3.5/26/90F 3.5SN OR	PCB plug-in connector, Male connectors, Soldered connection, Pitch: 3.50 mm, No. of poles: 26, 90°, Box
1756260000	S2L 3.5/26/90F 3.5AU SW	PCB plug-in connector, Male connectors, Soldered connection, Pitch: 3.50 mm, No. of poles: 26, 90°, Box
1728580000	S2L 3.5/28/90F 3.5SN OR	PCB plug-in connector, Male connectors, Soldered connection, Pitch: 3.50 mm, No. of poles: 28, 90°, Box
1728740000	S2L 3.5/28/90F 3.5SN SW	PCB plug-in connector, Male connectors, Soldered connection, Pitch: 3.50 mm, No. of poles: 28, 90°, Box
1728590000	S2L 3.5/30/90F 3.5SN OR	PCB plug-in connector, Male connectors, Soldered connection, Pitch: 3.50 mm, No. of poles: 30, 90°, Box
1728600000	S2L 3.5/32/90F 3.5SN OR	PCB plug-in connector, Male connectors, Soldered connection, Pitch: 3.50 mm, No. of poles: 32, 90°, Box
1728760000	S2L 3.5/32/90F 3.5SN SW	PCB plug-in connector, Male connectors, Soldered connection, Pitch: 3.50 mm, No. of poles: 32, 90°, Box
1756130000	S2L 3.5/32/90F 3.5AU OR	PCB plug-in connector, Male connectors, Soldered connection, Pitch: 3.50 mm, No. of poles: 32, 90°, Box
1728610000	S2L 3.5/34/90F 3.5SN OR	PCB plug-in connector, Male connectors, Soldered connection, Pitch: 3.50 mm, No. of poles: 34, 90°, Box
1756300000	S2L 3.5/34/90F 3.5AU SW	PCB plug-in connector, Male connectors, Soldered connection, Pitch: 3.50 mm, No. of poles: 34, 90°, Box
1728620000	S2L 3.5/36/90F 3.5SN OR	PCB plug-in connector, Male connectors, Soldered connection, Pitch: 3.50 mm, No. of poles: 36, 90°, Box
1728780000	S2L 3.5/36/90F 3.5SN SW	PCB plug-in connector, Male connectors, Soldered connection, Pitch: 3.50 mm, No. of poles: 36, 90°, Box
1756150000	S2L 3.5/36/90F 3.5AU OR	PCB plug-in connector, Male connectors, Soldered connection, Pitch: 3.50 mm, No. of poles: 36, 90°, Box
1756310000	S2L 3.5/36/90F 3.5AU SW	PCB plug-in connector, Male connectors, Soldered connection, Pitch: 3.50 mm, No. of poles: 36, 90°, Box