

Excellent Integrated System Limited

Stocking Distributor

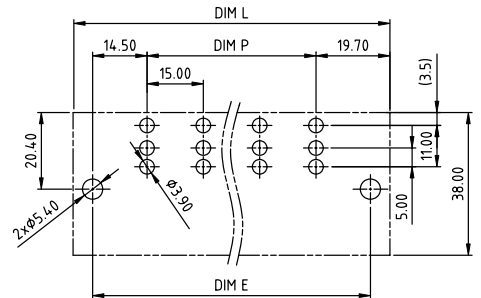
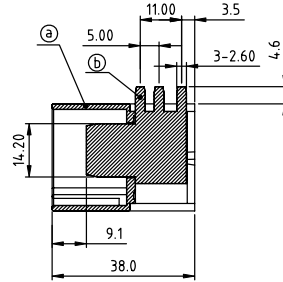
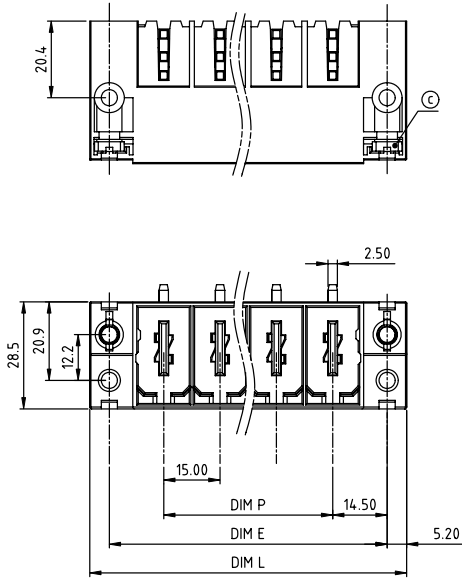
Click to view price, real time Inventory, Delivery & Lifecycle Information:

[FCI](#)
[KU02C15100J0G](#)

For any questions, you can email us directly:

sales@integrated-circuit.com

PRODUCT NUMBER	PITCH
KUxxC1x100J0G	15.00 mm



RECOMMENDED P.C.B. LAYOUT
TOP VIEW

- Material:**
- Item① Terminal housing-Thermoplastic(UL94V-0)
 - Item② Male contact: Copper. Gold plated.
 - Item③ With flange nut: Steel M5.0 zinc plated.
- Electrical:**
- Voltage rating: 600 V
 - Current rating: 115 A
 - Withstanding Voltage: 2.2 KV
 - Operating temperature: -40°C to +115°C
 - Soldering temperature: 260°C±5°C/5 Sec
 - Safety Approval: cULus

PART NO.: KU xx C 1 x 1 00J0 G

Dim L=N×15.00+24.4	
Dim P=(N-1)×15.00	
Dim E=(N-1)×15.00+29.0	
N=Number of poles	
Poles	Tolerance
2p-4p	±0.20
5p-7p	±0.35
8p-10p	±0.50

Solid block	No. of poles	Color	RoHS compliant (lead<4%) In copper Alloy
0	2	Black (RAL9005)	
02	2 poles	Red (RAL3001/D)	
03	3 poles	Orange(RAL2011/P)	
...	...	4 Yellow(RAL1018/A)	
...	...	5 Green(RAL6018/T)	
10	10 poles	6 Blue (RAL5015/A)	
		8 Grey(RAL7035/D)	
		9 White(RAL1102)	
		C Green(RAL6018/U)	

mat'l. code	surface ASME Y14.5	tolerance ASME Y14.5	projection	product family
ltr ecn no dr date	tolerances unless otherwise specified		MM	TERMINAL BLOCK
	angle	X.±0.5		title
	X'±1'	X.X±0.3		TERMINAL BLOCK
		X.XX±0.1	scale	PLUGGABLE SOCKET,RIGHT ANGLE,WITH FLANGE
dr	EVIN ZHONG	050814	FCI	dwg no
enrg	EVIN ZHONG	050814		sheet 1 of 1
chr	HANKE FENG	050814		size
appd	SHI JUN	050814		A4
sheet index	revision sheet	A 1		type
				CUSTOMER Drawing