

## Excellent Integrated System Limited

Stocking Distributor

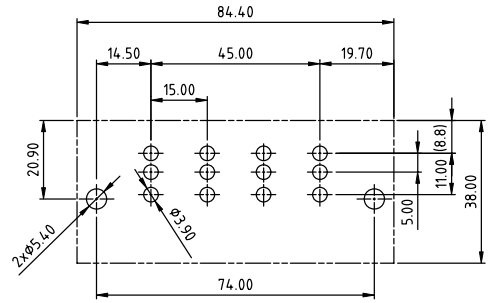
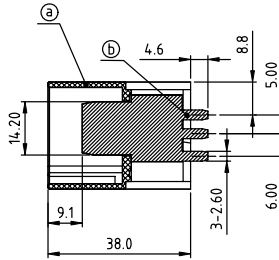
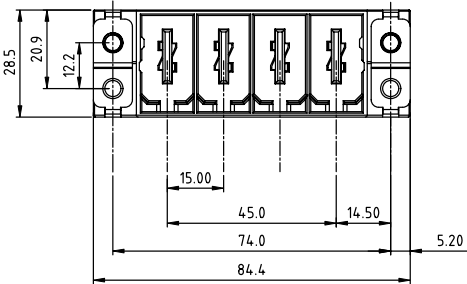
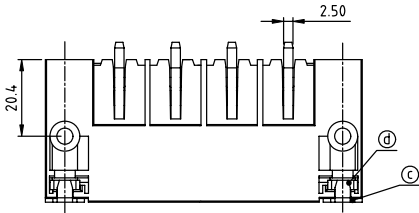
Click to view price, real time Inventory, Delivery & Lifecycle Information:

[FCI](#)  
[KU04C25000J0G](#)

For any questions, you can email us directly:

[sales@integrated-circuit.com](mailto:sales@integrated-circuit.com)

PRODUCT NUMBER	PITCH
KU04C2x000J0G	15.00 mm



RECOMMENDED P.C.B LAYOUT  
TOP VIEW

- Material:
- Item (a) Terminal housing: Thermoplastic (UL94V-0)
  - Item (b) Male contact: Copper, Gold plated.
  - Item (c) Contact: Brass, Tin Plated.
  - Item (d) With flange nut: Steel M5.0 zinc plated.
- Electrical:
- cULus
  - Voltage rating: 600 V
  - Current rating: 115 A
  - Withstanding Voltage: 2.2 KV
  - Operating temperature: -40°C to +115°C
  - Soldering temperature: 260°C±5°C/5 Sec
  - Safety Approval: cULus

PART NO.: KU 04 C 2 x 0 00J0 G

- |                     |                 |
|---------------------|-----------------|
| Color               | RoHS compliant  |
| 0 Black (RAL9005)   | (lead<4%)       |
| 2 Red (RAL3001/D)   | In copper Alloy |
| 3 Orange(RAL2011/P) |                 |
| 4 Yellow(RAL1018/A) |                 |
| 5 Green(RAL6018/T)  |                 |
| 6 Blue (RAL5015/A)  |                 |
| 8 Grey(RAL7035/D)   |                 |
| 9 White(RAL1102)    |                 |
| C Green(RAL6018/U)  |                 |

mat'l. code	surface ASME Y14.5	tolerance ASME Y14.5	projection	product family
ltr	ecn	no	dr	date
tolerances unless otherwise specified				TERMINAL BLOCK
angle	line	mm	MM	title
X±1°	X.X±0.3	X.XX±0.1	scale	TERMINAL BLOCK PLUGGABLE SOCKET, VERTICAL, WITH FLANGE SHIELD FEED-THROUGH
dr	ENGR	chr	appr	sheet 1 of 1
EVIN ZHONG	050814	HANKE FENG	050814	size
FCI				A4
sheet index	revision sheet	A	1	type
				CUSTOMER Drawing