

Excellent Integrated System Limited

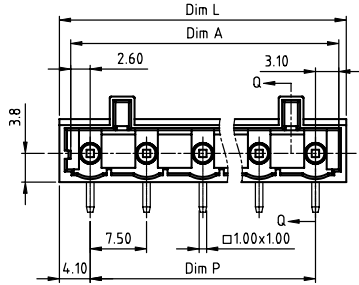
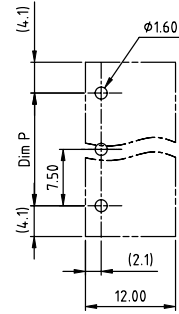
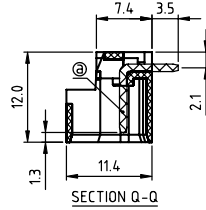
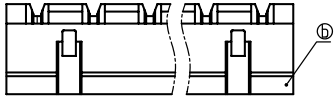
Stocking Distributor

Click to view price, real time Inventory, Delivery & Lifecycle Information:

[FCI](#)
[NC02A28100J0G](#)

For any questions, you can email us directly:
sales@integrated-circuit.com

| | |
|----------------|---------|
| PRODUCT NUMBER | PITCH |
| NCxxA2x100J0G | 7.50 mm |



RECOMMENDED P.C.B LAYOUT
TOP VIEW

- Material:
- Item①Male contact pin: Copper Tin plated
 - Item②Terminal(housing): Thermoplastic (UL94V-0)
- Electrical:
- Voltage rating: 300V
 - Current rating: 8A
 - Withstanding Voltage: 1.6 KV
 - Operating temperature: -40°C to +115°C
 - Soldering temperature: 260°C±5°C/5 Sec
 - Safety Approval:

N = Number of poles
Dim L=Nx7.5+0.7
Dim P=(N-1)x7.5
Dim A=(N-1)x7.5+5.7

PART NO.: NC xx A 2 x 1 00J0 G

- | | | | | | |
|-----------------------------|-----|-------|---|-------------------|--|
| Solid block No. of poles | 0 | Color | 0 | Black (RAL9005) | RoHS compliant (lead<4%) In copper Alloy |
| | 02 | 2 | 2 | Red (RAL3001/D) | |
| 03 | 3 | 3 | 3 | Orange(RAL2011/P) | |
| ... | ... | 4 | 4 | Yellow(RAL1018/A) | |
| ... | ... | 5 | 5 | Green(RAL6018/T) | |
| 16 | 16 | 6 | 6 | Blue (RAL5015/A) | |
| | | 8 | 8 | Grey(RAL7035/D) | |
| | | 9 | 9 | White(RAL1102) | |
| | | C | C | Green(RAL6018/U) | |

| poles | Dim L | Dim P | Dim A |
|--------|-------|-------|-------|
| 2-6p | ±0.20 | ±0.20 | ±0.20 |
| 7-12p | ±0.25 | ±0.25 | ±0.25 |
| 13-16p | ±0.40 | ±0.30 | ±0.30 |

| | | | | |
|---------------------------------------|-----------------------|-------------------------|----------------|--|
| mat'l. code | surface ASME Y14.5 | tolerance ASME Y14.5 | projection | product family TERMINAL BLOCK |
| ltr | ecn | no | dr | date |
| tolerances unless otherwise specified | | | | title TERMINAL BLOCK |
| angles | X.±0.5 | | | PLUGGABLE SOCKET,RIGHT ANGLE,W/HOOK HOLDER |
| X'±1' | X.X±0.3 | | | dwg no NCxxA2x100J0G |
| | X.XX±0.1 | | | sheet 1 of 1 |
| dr | EVIN ZHONG | 042314 | | size A4 |
| enrg | EVIN ZHONG | 042314 | | type CUSTOMER Drawing |
| chr | HANKE FENG | 042314 | | |
| appd | SHI JUN | 042314 | | |
| sheet index | revision sheet | A 1 | | |