

Excellent Integrated System Limited

Stocking Distributor

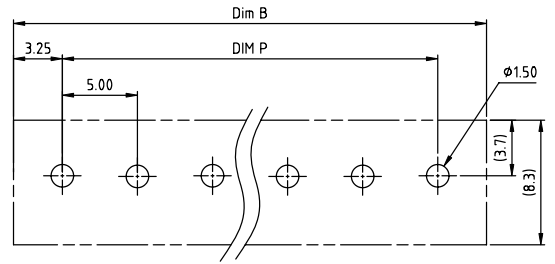
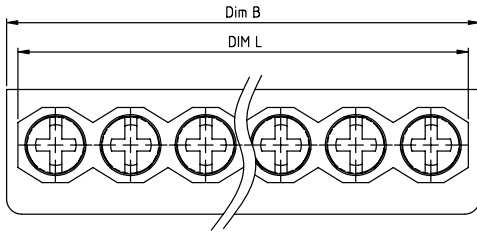
Click to view price, real time Inventory, Delivery & Lifecycle Information:

[FCI](#)
[T403045000J0G](#)

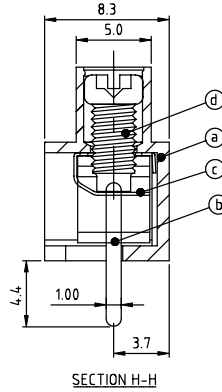
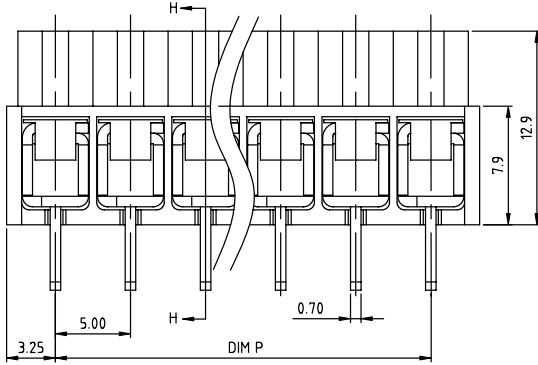
For any questions, you can email us directly:

sales@integrated-circuit.com

PRODUCT NUMBER	PITCH
T4xx04x000J0G	5.00 mm



RECOMMENDED P.C.B LAYOUT
TOP VIEW



- Material:
- Item ① Insulator(housing):Thermoplastic (UL 94V-0)
 - Item ② Terminal:Brass,Tin plated
 - Item ③ Wire guard:Stainless steel
 - Item ④ Terminal screw: Steel Zinc plating"+/-"combination type

- Electrical cULus/VDE
- Voltage rating:300VAC/450VAC
 - Current rating:10A/17.5A
 - Wire range: 0.75-4.0mm²
 - Solid wire(AWG):12-20
 - Stranded wire(AWG):12-20
 - Torque: 3.5Lb-In/0.4Nm
 - Screw: M3
 - Wire strip length: 6-7mm
 - Withstanding Voltage: 1.6KV/2.5KV
 - Operating temperature: -40°C to +115°C
 - Soldering temperature: 260°C±5°C/5 Sec
 - Safety Approval:

N = Number of poles
Dim L=Nx5.0
Dim P=(N-1)x5.0
Dim B=Nx5.0+1.5

poles	Dim L	Dim P
2-6p	±0.20	±0.15
7-12p	±0.25	±0.20
13-18p	±0.30	±0.25
19-24p	±0.40	±0.30

PART NO.: T4 xx 04 x 0 00J0 G

Solid block	Body Color	RoHS compliant
No. of poles	0 Black (RAL9005)	(lead-4%) In copper Alloy
02 2 poles	2 Red (RAL3001/D)	
03 3 poles	3 Orange(RAL2011/P)	
...	4 Yellow(RAL1018/A)	
24 24 poles	5 Green(RAL6018/T)	
	6 Blue (RAL5015/A)	
	8 Grey(RAL7035/D)	
	9 White(RAL1102)	
	C Green(RAL6018/U)	

mat'l. code	surface ASME Y14.5	tolerance ASME Y14.5	projection 	product family TERMINAL BLOCK
ltr ecn no dr date	tolerances unless otherwise specified		title TERMINAL BLOCK	sheet 1 of 1 size A4
	angles X±1°	X.±0.5 X.X±0.3 X.XX±0.1	scale MM	type CUSTOMER Drawing
dr	EVIN ZHONG	040114		
enrg	EVIN ZHONG	040114		
chr	HANKE FENG	040114		
appd	SHI JUN	040114		
sheet index	revision sheet	A 1		