

Excellent Integrated System Limited

Stocking Distributor

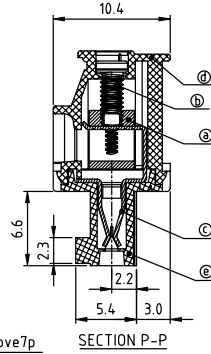
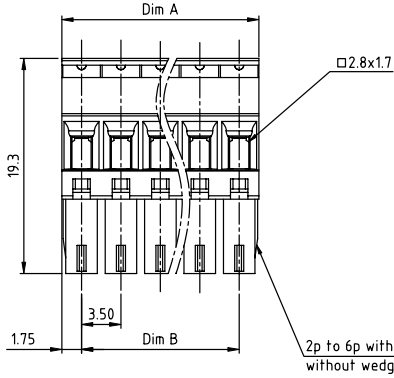
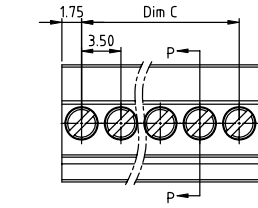
Click to view price, real time Inventory, Delivery & Lifecycle Information:

[FCI](#)
[TS02115A00J0G](#)

For any questions, you can email us directly:

sales@integrated-circuit.com

PRODUCT NUMBER	PITCH
TSxx11xA00J0G	3.50 mm



Material

- Item a Terminal body (metal housing): Brass (CuZn), Nickel plated
- Item b Terminal screw: Steel Zinc plating "-" slot type
- Item c Wire guard: PhBz, Tin plated
- Item d Top body: Thermoplastic (UL94V-0)
- Item e Bottom body: Thermoplastic (UL94V-0)

Electrical cULus/VDE

- Voltage rating: 300VAC/300VAC
- Current rating: 8A/10A
- Wire range: 1.5mm²
- Solid wire (AWG): 16-28
- Stranded wire (AWG): 16-28
- Torque: 1.7Lb-In./0.2Nm
- Screw: M2
- Wire strip length: 6-7mm
- Withstanding Voltage: 1.6KV/2.5KV
- Operating temperature: -40°C to +115°C
- Safety approval: cULus VDE

DIMENSION

Dim A	NX3.5
Dim B	(N-1)X3.5
Dim C	(N-1)X3.5

N = Number of poles

Poles	Tolerance
2P-8P	±0.10
9P-16P	±0.20
17P-24P	±0.30

PART NO.: TS xx 11 x A 00J0 G

- | | | | | |
|--------------|----------|-------|--------------------|-----------------|
| Solid black | 0 | Color | Black (RAL9005) | RoHS compliant |
| No. of poles | 2 | | Red (RAL3001/D) | (lead-4%) |
| 02 | 2 poles | | Orange (RAL2011/P) | In copper Alloy |
| 03 | 3 poles | | Yellow (RAL1018/A) | |
| ... | ... | | Green (RAL6018/T) | |
| 24 | 24 poles | | Blue (RAL5015/A) | |
| | | | Grey (RAL7035/D) | |
| | | | White (RAL1102) | |
| | | | Green (RAL6018/U) | |

mat'l. code	surface ASME Y14.5 ✓ tolerance ASME Y14.5	projection MM	product family TERMINAL BLOCK
ltr	ecn no	dr	date
tolerances unless otherwise specified			title TERMINAL BLOCK
angles	X.±0.5	PLUGGABLE PLUG, HOOK ON ENTRY SIDE, WITHOUT FLANGE	
X'±1'	X.X±0.3	scale	
dr	EVIN ZHONG	041814	sheet 1 of 1 size
enrg	EVIN ZHONG	041814	A4
chr	HANKE FENG	041814	TSxx11xA00J0G
appd	SHI JUN	041814	type CUSTOMER Drawing
sheet index	revision sheet	A 1	