

Excellent Integrated System Limited

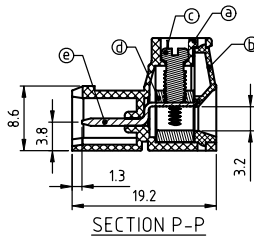
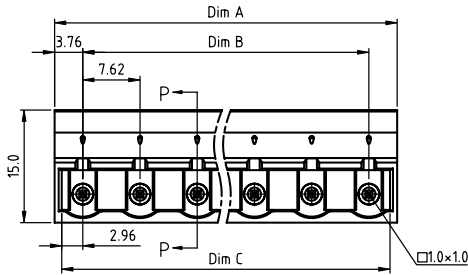
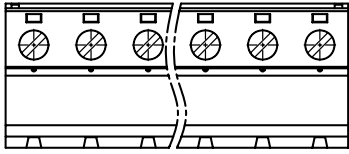
Stocking Distributor

Click to view price, real time Inventory, Delivery & Lifecycle Information:

[FCI](#)
[V802015000J0G](#)

For any questions, you can email us directly:
sales@integrated-circuit.com

PRODUCT NUMBER	PITCH
V8xx01x000J0G	7.62 mm



Material:

- Item ① Terminal(housing):Thermoplastic (UL94V-0)
- Item ② Terminal (Cover):Thermoplastic (UL94V-0)
- Item ③ Terminal screw:Steel Zinc plating "-" slot type
- Item ④ Clamp:Brass(CuZn) nickel plating
- Item ⑤ Pin: Copper,Tin plated

Electrical cULus

- Voltage rating: 300VAC
- Current rating: 20A
- Wire range:
 - Solid wire(AWG): 12-24
 - Stranded wire(AWG): 12-24
- Torque: 4 Lb-In
- Screw: M3
- Wire strip length: 7-8mm
- Withstanding Voltage: 1.6KV
- Operating temperature: -40°C to +115°C
- Safety Approval:

DIMENSION

Dim A	(N-1)X7.62+7.52
Dim B	(N-1)X7.62
Dim C	(N-1)X7.62+5.92

N=Number of poles

Poles	Dim A	Dim B	Dim C
2p-4p	±0.15	±0.15	+0.15 0
5p-8p	±0.25	±0.25	+0.25 0
9p-12p	±0.30	±0.30	+0.30 0
13p-16p	±0.40	±0.40	+0.40 0

PART NO.: V8 xx 01 x 0 00J0 G

Solid block	No. of poles	Color	RoHS compliant (lead<4%) In copper Alloy
0	2	Black (RAL9005)	
02	2 poles	Red (RAL3001/D)	
03	3 poles	Orange(RAL2011/P)	
4	3 poles	Yellow(RAL1018/A)	
5	3 poles	Green(RAL6018/T)	
6	6 poles	Blue (RAL5015/A)	
8	6 poles	Grey(RAL7035/D)	
9	6 poles	White(RAL1102)	
C	6 poles	Green(RAL6018/U)	

mat'l. code	surface ASME Y14.5 ✓	tolerance ASME Y14.5	projection	product family	TERMINAL BLOCK
ltr	ecn	no	dr	date	title
					TERMINAL BLOCK
					PLUGGABLE PLUG
					dwg no
					V8xx01x000J0G
					sheet 1 of 1
					size A4
					type
					CUSTOMER Drawing
sheet index	revision sheet	A	1		