

Excellent Integrated System Limited

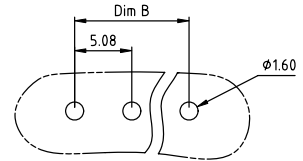
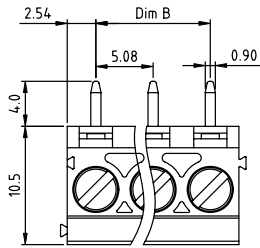
Stocking Distributor

Click to view price, real time Inventory, Delivery & Lifecycle Information:

[FCI](#)
[VJ02215000J0G](#)

For any questions, you can email us directly:
sales@integrated-circuit.com

PRODUCT NUMBER	PITCH
VJxx21x000J0G	5.08mm

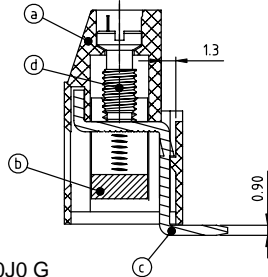
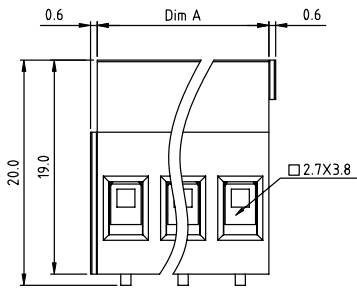


RECOMMENDED P.C.B LAYOUT
TOP VIEW

Material:

- Item① Terminal housing:Thermoplastic (UL 94V-0)
- Item② Clamp: Brass Ni plated
- Item③ Solder pin:Brass Tin plated
- Item④ Terminal screw: Steel Zinc plating"-slot type

- Electrical cULus VDE
- Voltage rating: 300VAC 450V
 - Current rating: 20A 24A
 - Wire range : 0.2-2.5mm²
 - Solid wire(AWG): 12-30
 - Stranded wire(AWG): 12-30
 - Torque: 3.5Lb-in 0.5 N.m
 - Screw: M3
 - Wire strip length: 6-7mm
 - Withstanding Voltage: 1.6KV 2.5KV
 - Operating temperature: -40°C to +115°C
 - Soldering temperature: 260°C±5°C/5 Sec
 - Safety Approval:



PART NO.: VJ xx 2 1 x 0 00J0 G

Dimension A&B

DIM A	N×5.08
DIM B	(N-1)×5.08

N=Number of poles

Poles	DimA&B Tolerance
2P-6P	±0.15
7P-12P	±0.25
13P-18P	±0.35
19P-24P	±0.40

- | | | | |
|---------------|---|-------------------|-----------------|
| End stackable | 0 | Color | RoHS compliant |
| No. of poles | 2 | Black (RAL9005) | (lead<4%) |
| 02 2 poles | 3 | Red (RAL3001/D) | In copper Alloy |
| 03 3 poles | 4 | Orange(RAL2011/P) | |
| ... | 5 | Yellow(RAL1018/A) | |
| 24 24 poles | 6 | Green(RAL6018/T) | |
| | 7 | Blue (RAL5015/A) | |
| | 8 | Grey(RAL7035/D) | |
| | 9 | White(RAL1102) | |
| | C | Green(RAL6018/U) | |

mat'l. code	surface ASME Y14.5	tolerance ASME Y14.5	projection	product family
ltr ecn no dr date	tolerances unless otherwise specified	angles X±0.5 X.X±0.3 X'±1'	MM	TERMINAL BLOCK
		scale		title
		dr EVIN ZHONG 040914		TERMINAL BLOCK
		enrg EVIN ZHONG 040914		RISING CLAMP,90D WIRE INLET,END STACKABLE
		chr HANKE FENG 040914		dwg no
		appd SHI JUN 040914		VJxx21x000J0G
sheet index	revision sheet	A 1		sheet 1 of 1 size A4
				type CUSTOMER Drawing