



Distributor of FCI: Excellent Integrated System Limited

Datasheet of YK40202230J0G - Connector Barrier Block Strip 2 Circuit 0.325" (8.26mm)

Contact us: sales@integrated-circuit.com Website: www.integrated-circuit.com

Excellent Integrated System Limited

Stocking Distributor

Click to view price, real time Inventory, Delivery & Lifecycle Information:

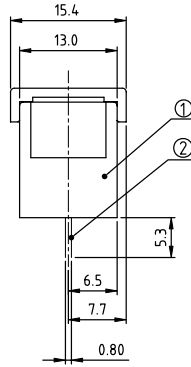
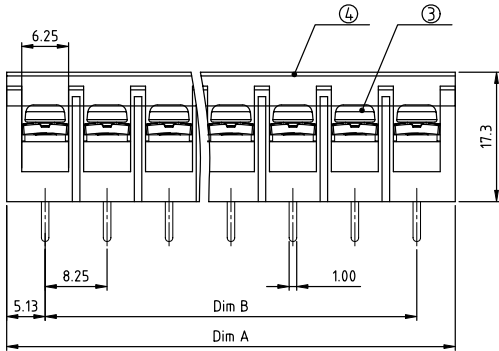
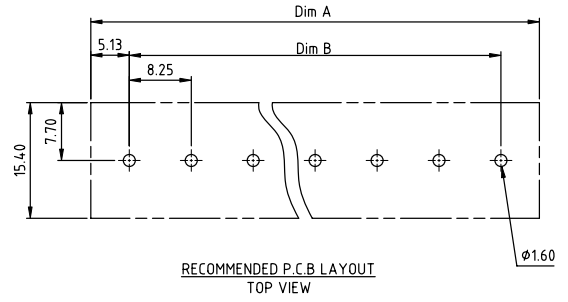
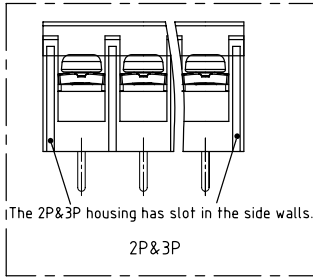
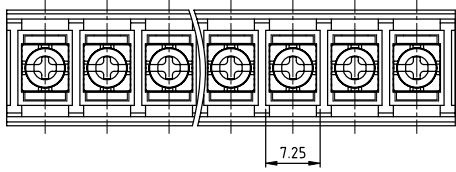
[FCI](#)

[YK40202230J0G](#)

For any questions, you can email us directly:

sales@integrated-circuit.com

PRODUCT NUMBER	PITCH
YK402xx2x0J0G	8.25 mm



- MATERIALS ELECTRICAL**
 RATED VOLTAGE & CURRENT: 300 V, 20 A
 WITHSTAND VOLTAGE: AC 2000 V/Min
 INSULATION RESISTANCE: 1000 MΩ OR MORE AT DC 500 V
 OPERATING TEMPERATURE RANG: -40 °C ~ +115 °C
 SCREW TORQUE VALUE: 7 Lb-In.
 WIRE RANGE: 22 - 12 AWG
 1) HOUSING: Thermoplastic, UL 94 V-0 BLACK
 2) TERMINAL: BRASS, 0.8T
 3) TERMINAL SCREWS: STEEL, M3
 4) COVER MATERIAL: PC
 APPROVAL:

DIMENSION

Dim A	N×8.25±2.0
Dim B	(N-1)×8.25

N=Number of poles

Poles	Tolerance
2p-4p	±0.30
5p-8p	±0.40
9p-16p	±0.50
17p-23p	±0.60
24p-30p	±0.80

PART NO.: YK 402xx 2 x 0 J0G

No. of poles	Code	Terminal	Screw	RoHS compliant (lead<4%) In copper Alloy
02 2 poles	0	G/F	G/F	
03 3 poles	1	G/F	Zinc	
...	2	Tin	G/F	
30 30 poles	3	Tin	Zinc	

mat'l. code	surface ASME Y14.5 ✓	tolerance ASME Y14.5	projection	product family
ltr ecn no dr date	tolerances unless otherwise specified		MM	TERMINAL BLOCK
angles	X.±0.5		scale	title
X'±1'	X.X±0.3			TERMINAL BLOCK
dr	EVAN LU	061014		BARRIER TYPE, WITH COVER
enrg	EVAN LU	061014		FCI
chr	HANKE FENG	061014		dwg no
appd	SHI JUN	061014		YK402xx2x0J0G
sheet index	revision sheet	A 1		type
				CUSTOMER Drawing