

Excellent Integrated System Limited

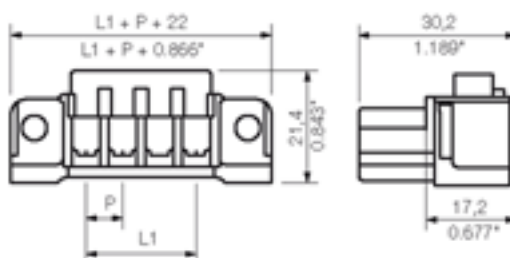
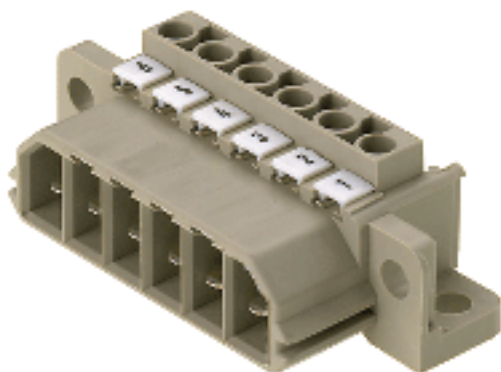
Stocking Distributor

Click to view price, real time Inventory, Delivery & Lifecycle Information:

[Weidmüller](#)
[1612130000](#)

For any questions, you can email us directly:

sales@integrated-circuit.com


General ordering data

Order No.	1612130000
Part designation	STV S 8 SS
Version	PCB plug-in connector, Male connectors, Leaf spring connection, Clamping range, max.: 4 mm ² , Pitch: 7.00 mm, No. of poles: 8, 180°, Box
EAN	4008190198848
Qty.	10 pc(s).

System parameters

Conductor connection system	Leaf spring connection
Outgoing direction of conductor	180°
Pitch	7 mm
Pitch in inch	0.276 inch
No. of poles	8
No. of rows	1
Screwdriver blade	0.6 x 3.5
Screwdriver blade standard	DIN 5264
Tightening torque, min.	0.5 Nm
Tightening torque, max.	0.6 Nm
Clamping screw	M 3
Stripping length	9 mm
L1 in mm	49 mm
L1 in inch	1.929 inch
Electric shock protection to DIN VDE 0470	IP20 plugged
Electric shock protection to DIN VDE 0470	Safe from finger touch, plugged

Material data

Insulating material	Wemid (PA)
Colour	pebble grey
colour chart	Similar to RAL 7032
Insulating material group	I
Flammability class UL 94	V-0
CTI	>= 600
Contact base material	CuZn

Material data	
Contact surface	silver-plated
Connectable conductors	
Clamping range, min.	0.5 mm ²
Clamping range, max.	4 mm ²
AWG, min.	22
AWG, max.	12
Solid, min. H05(07) V-U	0.5 mm ²
Solid, max. H05(07) V-U	4 mm ²
Flexible, min. H05(07) V-K	0.5 mm ²
Flexible, max. H05(07) V-K	4 mm ²
With wire end ferrule, acc. to DIN 46 228/1, min.	0.5 mm ²
With wire end ferrule, acc. to DIN 46 228/1, max.	4 mm ²
w. plastic collar ferrule, DIN 46228 pt 4, min.	0.5 mm ²
w. plastic collar ferrule, DIN 46228 pt 4, max.	4 mm ²
Gauge to EN 60999 a x b; ø	2.8 mm x 2.0 mm;
DIN IEC rating data	
Rated current, min. No. pins (Tu=20°C)	32 A
Rated current, max. No. pins (Tu=20°C)	28 A
Rated current, min. No. pins (Tu=40°C)	32 A
Rated current, max. No. pins (Tu=40°C)	24 A
Rated voltage for overvoltage class/pollution severity II/2	1,000 V
Rated voltage for overvoltage class/pollution severity III/2	500 V
Rated voltage for overvoltage class/pollution severity III/3	500 V
Rated impulse withstand voltage for overvoltage class/pollution severity II/2	6 kV
Rated impulse withstand voltage for overvoltage class/pollution severity III/2	6 kV
Rated impulse withstand voltage for overvoltage class/pollution severity III/3	6 kV
Short-time withstand current resistance	3 x 1s with 340 A
CSA rating data	
Rated voltage (Use group D)	300 V
Rated current (Use group D)	25 A
AWG conductor (field wiring), min.	20
AWG conductor (field wiring), max.	12
UL 1977 rating data	
Rated voltage (UL 1977)	600 V
Rated current (UL 1977)	25 A
AWG-conductor, min. (UL 1977)	22
AWG-conductor, max. (UL 1977)	12

Approvals

Approvals institutes



Classifications

ETIM 2.0	NK
ETIM 3.0	EC001284
eClass 4.1	27-26-07-01
eClass 5.0	27-26-07-01
eClass 5.1	27-26-07-01

Similar products

Order No.	Part designation	Version
1611950000	STV S 2 SS	PCB plug-in connector, Male connectors, Leaf spring connection, Clamping range, max.: 4 mm ² , Pitch: 7.00 mm, No. of poles: 2, 180°, Box
1611980000	STV S 3 SS	PCB plug-in connector, Male connectors, Leaf spring connection, Clamping range, max.: 4 mm ² , Pitch: 7.00 mm, No. of poles: 3, 180°, Box
1612010000	STV S 4 SS	PCB plug-in connector, Male connectors, Leaf spring connection, Clamping range, max.: 4 mm ² , Pitch: 7.00 mm, No. of poles: 4, 180°, Box
1612040000	STV S 5 SS	PCB plug-in connector, Male connectors, Leaf spring connection, Clamping range, max.: 4 mm ² , Pitch: 7.00 mm, No. of poles: 5, 180°, Box
1612070000	STV S 6 SS	PCB plug-in connector, Male connectors, Leaf spring connection, Clamping range, max.: 4 mm ² , Pitch: 7.00 mm, No. of poles: 6, 180°, Box
1612100000	STV S 7 SS	PCB plug-in connector, Male connectors, Leaf spring connection, Clamping range, max.: 4 mm ² , Pitch: 7.00 mm, No. of poles: 7, 180°, Box
1612160000	STV S 9 SS	PCB plug-in connector, Male connectors, Leaf spring connection, Clamping range, max.: 4 mm ² , Pitch: 7.00 mm, No. of poles: 9, 180°, Box
1612190000	STV S 10 SS	PCB plug-in connector, Male connectors, Leaf spring connection, Clamping range, max.: 4 mm ² , Pitch: 7.00 mm, No. of poles: 10, 180°, Box