

## Excellent Integrated System Limited

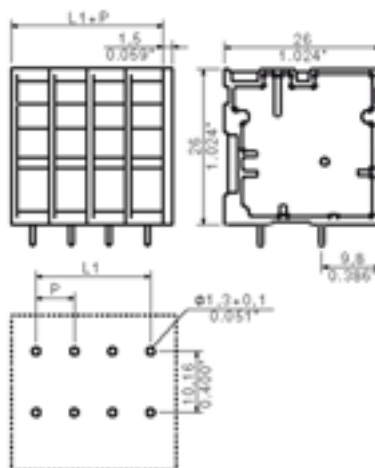
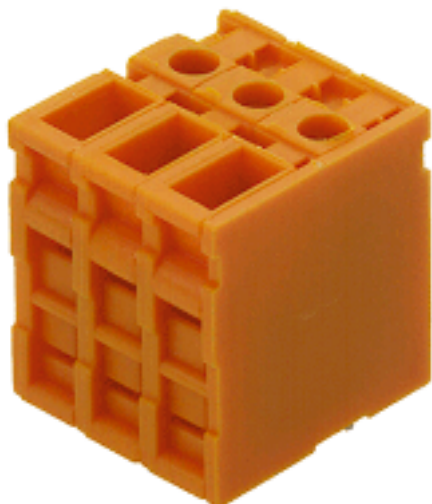
Stocking Distributor

Click to view price, real time Inventory, Delivery & Lifecycle Information:

[Weidmüller](#)  
[1786270000](#)

For any questions, you can email us directly:

[sales@integrated-circuit.com](mailto:sales@integrated-circuit.com)


**General ordering data**

Order No.	1786270000
Part designation	TOP4GS10/180 6.35 OR
Version	PCB terminal, TOP connection, Soldered connection, Clamping range, max.: 6 mm <sup>2</sup> , Pitch: 6.35 mm, No. of poles: 10, 180°, Box
EAN	4032248200900
Qty.	50 pc(s).

**System parameters**

Product family	System TOP4GS
Conductor connection system	TOP connection
Fitted to PCB	Soldered connection
Outgoing direction of conductor	180°
Pitch	6.35 mm
Pitch in inch	0.25 inch
No. of poles	10
Fitted by customer	no
No. of rows	1
Solder pin length	3.5 mm
Dia. of fitting hole	1.3 mm
Fitting hole tolerance	+ 0.1 mm
No. of solder pins per pole	2
Screwdriver blade	0.6 x 3.5
Screwdriver blade standard	DIN 5264
Tightening torque, min.	0.5 Nm
Tightening torque, max.	0.6 Nm
Clamping screw	M 3
Stripping length	13 mm
L1 in mm	57.15 mm
L1 in inch	2.25 inch

**Material data**

Insulating material	PA
Colour	orange

**Material data**

colour chart	Similar to RAL 2000
Insulating material group	I
Flammability class UL 94	V-2
CTI	>= 600
Contact base material	E-Cu
Contact surface	tinned
Storage temperature, min.	-25 °C
Storage temperature, max.	55 °C

**Connectable conductors**

Clamping range, min.	0.13 mm <sup>2</sup>
Clamping range, max.	6 mm <sup>2</sup>
AWG, min.	26
AWG, max.	10
Solid, min. H05(07) V-U	0.5 mm <sup>2</sup>
Solid, max. H05(07) V-U	6 mm <sup>2</sup>
Flexible, min. H05(07) V-K	0.5 mm <sup>2</sup>
Flexible, max. H05(07) V-K	4 mm <sup>2</sup>
With wire end ferrule, acc. to DIN 46 228/1, min.	0.5 mm <sup>2</sup>
With wire end ferrule, acc. to DIN 46 228/1, max.	4 mm <sup>2</sup>
w. plastic collar ferrule, DIN 46228 pt 4, min.	0.5 mm <sup>2</sup>
w. plastic collar ferrule, DIN 46228 pt 4, max.	4 mm <sup>2</sup>
Gauge to EN 60999 a x b; ø	2.8 mm x 2.4 mm;

**DIN IEC rating data**

Rated current, min. No. pins (Tu=20°C)	32 A
Rated current, min. No. pins (Tu=40°C)	32 A
Rated voltage for overvoltage class/pollution severity II/2	320 V
Rated voltage for overvoltage class/pollution severity III/2	320 V
Rated voltage for overvoltage class/pollution severity III/3	320 V
Rated impulse withstand voltage for overvoltage class/pollution severity II/2	2.5 kV
Rated impulse withstand voltage for overvoltage class/pollution severity III/2	2.5 kV
Rated impulse withstand voltage for overvoltage class/pollution severity III/3	2.5 kV

**CSA rating data**

Rated voltage (Use group D)	300 V
Rated current (Use group D)	10 A
AWG conductor (field wiring), min.	26
AWG conductor (field wiring), max.	10

**UL 1059 rating data**

Rated voltage (Use group D)	300 V
Rated current (Use group D)	10 A
AWG conductor, min.	26
AWG conductor, max.	10

#### UL 1059 rating data

#### Approvals

Approvals institutes



#### Downloads

CAD Library (P-CAD Format - Standard) TOP 4GS.LIB

#### Classifications

ETIM 2.0	NK
ETIM 3.0	EC001284
eClass 4.1	NK
eClass 5.0	NK
eClass 5.1	NK

#### Similar products

Order No.	Part designation	Version
1786190000	TOP4GS2/180 6.35 OR	PCB terminal, TOP connection, Soldered connection, Clamping range, max.: 6 mm <sup>2</sup> , Pitch: 6.35 mm, No. of poles: 2, 180°, Box
1786200000	TOP4GS3/180 6.35 OR	PCB terminal, TOP connection, Soldered connection, Clamping range, max.: 6 mm <sup>2</sup> , Pitch: 6.35 mm, No. of poles: 3, 180°, Box
1786210000	TOP4GS4/180 6.35 OR	PCB terminal, TOP connection, Soldered connection, Clamping range, max.: 6 mm <sup>2</sup> , Pitch: 6.35 mm, No. of poles: 4, 180°, Box
1786220000	TOP4GS5/180 6.35 OR	PCB terminal, TOP connection, Soldered connection, Clamping range, max.: 6 mm <sup>2</sup> , Pitch: 6.35 mm, No. of poles: 5, 180°, Box
1786230000	TOP4GS6/180 6.35 OR	PCB terminal, TOP connection, Soldered connection, Clamping range, max.: 6 mm <sup>2</sup> , Pitch: 6.35 mm, No. of poles: 6, 180°, Box
1786240000	TOP4GS7/180 6.35 OR	PCB terminal, TOP connection, Soldered connection, Clamping range, max.: 6 mm <sup>2</sup> , Pitch: 6.35 mm, No. of poles: 7, 180°, Box
1786250000	TOP4GS8/180 6.35 OR	PCB terminal, TOP connection, Soldered connection, Clamping range, max.: 6 mm <sup>2</sup> , Pitch: 6.35 mm, No. of poles: 8, 180°, Box
1786260000	TOP4GS9/180 6.35 OR	PCB terminal, TOP connection, Soldered connection, Clamping range, max.: 6 mm <sup>2</sup> , Pitch: 6.35 mm, No. of poles: 9, 180°, Box
1786280000	TOP4GS11/180 6.35 OR	PCB terminal, TOP connection, Soldered connection, Clamping range, max.: 6 mm <sup>2</sup> , Pitch: 6.35 mm, No. of poles: 11, 180°, Box
1786290000	TOP4GS12/180 6.35 OR	PCB terminal, TOP connection, Soldered connection, Clamping range, max.: 6 mm <sup>2</sup> , Pitch: 6.35 mm, No. of poles: 12, 180°, Box