

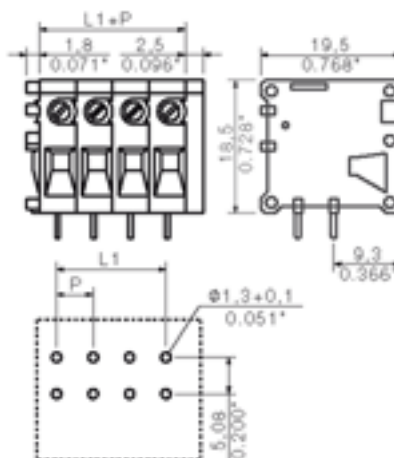
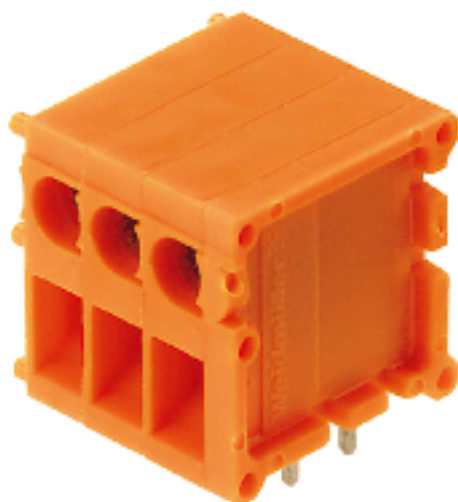
Excellent Integrated System Limited

Stocking Distributor

Click to view price, real time Inventory, Delivery & Lifecycle Information:

[Weidmüller](#)
[0594160000](#)

For any questions, you can email us directly:
sales@integrated-circuit.com



General ordering data

Order No.	0594160000
Part designation	TOP1.5GS9/90 5 2STI OR
Version	PCB terminal, TOP connection, Soldered connection, Clamping range, max.: 2.5 mm ² , Pitch: 5.08 mm, No. of poles: 9, 90°, Box
EAN	4008190875183
Qty.	50 pc(s).

System parameters

Product family	System TOP1.5GS
Conductor connection system	TOP connection
Fitted to PCB	Soldered connection
Outgoing direction of conductor	90°
Pitch	5.08 mm
Pitch in inch	0.2 inch
No. of poles	9
Fitted by customer	no
No. of rows	1
Solder pin length	3.5 mm
Dia. of fitting hole	1.3 mm
Fitting hole tolerance	+ 0.1 mm
No. of solder pins per pole	2
Screwdriver blade	0.6 x 3.5
Screwdriver blade standard	DIN 5264
Tightening torque, min.	0.4 Nm
Tightening torque, max.	0.5 Nm
Clamping screw	M 2.5
Stripping length	10 mm
L1 in mm	40.64 mm
L1 in inch	1.6 inch
Electric shock protection to DIN VDE 0470	IP 20
Electric shock protection to DIN VDE 0470	Safe from finger touch

Material data

Insulating material	PA
Colour	orange
colour chart	Similar to RAL 2000
Insulating material group	I
Flammability class UL 94	V-2
CTI	>= 600
Contact base material	CuZn
Contact surface	tinned
Storage temperature, min.	-25 °C
Storage temperature, max.	55 °C

Connectable conductors

Clamping range, min.	0.13 mm ²
Clamping range, max.	2.5 mm ²
AWG, min.	26
AWG, max.	14
Solid, min. H05(07) V-U	0.5 mm ²
Solid, max. H05(07) V-U	2.5 mm ²
Flexible, min. H05(07) V-K	0.5 mm ²
Flexible, max. H05(07) V-K	2.5 mm ²
With wire end ferrule, acc. to DIN 46 228/1, min.	0.5 mm ²
With wire end ferrule, acc. to DIN 46 228/1, max.	2.5 mm ²
w. plastic collar ferrule, DIN 46228 pt 4, min.	0.5 mm ²
w. plastic collar ferrule, DIN 46228 pt 4, max.	2.5 mm ²
Gauge to EN 60999 a x b; ø	2.4 mm x 1.5 mm;

DIN IEC rating data

Rated current, min. No. pins (Tu=20°C)	24 A
Rated current, max. No. pins (Tu=20°C)	19 A
Rated current, min. No. pins (Tu=40°C)	21
Rated current, max. No. pins (Tu=40°C)	16 A
Rated voltage for overvoltage class/pollution severity II/2	630 V
Rated voltage for overvoltage class/pollution severity III/2	320 V
Rated voltage for overvoltage class/pollution severity III/3	250 V
Rated impulse withstand voltage for overvoltage class/pollution severity II/2	2.5 kV
Rated impulse withstand voltage for overvoltage class/pollution severity III/2	2.5 kV
Rated impulse withstand voltage for overvoltage class/pollution severity III/3	2.5 kV
Short-time withstand current resistance	3 x 1s with 120 A

CSA rating data

Rated voltage (Use group D)	300 V
Rated current (Use group D)	10 A
AWG conductor (field wiring), min.	26
AWG conductor (field wiring), max.	14

UL 1059 rating data

Rated voltage (Use group D)	300 V
Rated current (Use group D)	10 A
AWG conductor, min.	26
AWG conductor, max.	14

Approvals

Approvals institutes



Downloads

CAD Library (P-CAD Format - Standard)	TOP 1.5GS.LIB
---------------------------------------	---------------

Classifications

ETIM 2.0	NK
ETIM 3.0	EC001284
eClass 4.1	NK
eClass 5.0	NK
eClass 5.1	NK

Similar products

Order No.	Part designation	Version
0641960000	TOP1.5GS2/90 5 2STI OR	PCB terminal, TOP connection, Soldered connection, Clamping range, max.: 2.5 mm ² , Pitch: 5.08 mm, No. of poles: 2, 90°, Box
0642060000	TOP1.5GS3/90 5 2STI OR	PCB terminal, TOP connection, Soldered connection, Clamping range, max.: 2.5 mm ² , Pitch: 5.08 mm, No. of poles: 3, 90°, Box
0642160000	TOP1.5GS/04/90	PCB terminal, TOP connection, Soldered connection, Clamping range, max.: 2.5 mm ² , Pitch: 5.08 mm, No. of poles: 4, 90°, Box
1578820000	TOP1.5GS5/90 5 2STI OR	PCB terminal, TOP connection, Soldered connection, Clamping range, max.: 2.5 mm ² , Pitch: 5.08 mm, No. of poles: 5, 90°, Box
0593860000	TOP1.5GS6/90 5 2STI OR	PCB terminal, TOP connection, Soldered connection, Clamping range, max.: 2.5 mm ² , Pitch: 5.08 mm, No. of poles: 6, 90°, Box
0593960000	TOP1.5GS7/90 5 2STI OR	PCB terminal, TOP connection, Soldered connection, Clamping range, max.: 2.5 mm ² , Pitch: 5.08 mm, No. of poles: 7, 90°, Box
0594060000	TOP1.5GS8/90 5 2STI OR	PCB terminal, TOP connection, Soldered connection, Clamping range, max.: 2.5 mm ² , Pitch: 5.08 mm, No. of poles: 8, 90°, Box
0642260000	TOP1.5GS/10/90	PCB terminal, TOP connection, Soldered connection, Clamping range, max.: 2.5 mm ² , Pitch: 5.08 mm, No. of poles: 10, 90°, Box
0594260000	TOP1.5GS11/90 5 2STI OR	PCB terminal, TOP connection, Soldered connection, Clamping range, max.: 2.5 mm ² , Pitch: 5.08 mm, No. of poles: 11, 90°, Box

0594360000	TOP1.5GS12/90 5 2STI OR	PCB terminal, TOP connection, Soldered connection, Clamping range, max.: 2.5 mm ² , Pitch: 5.08 mm, No. of poles: 12, 90°, Box
0594460000	TOP1.5GS13/90 5 2STI OR	PCB terminal, TOP connection, Soldered connection, Clamping range, max.: 2.5 mm ² , Pitch: 5.08 mm, No. of poles: 13, 90°, Box
0594560000	TOP1.5GS14/90 5 2STI OR	PCB terminal, TOP connection, Soldered connection, Clamping range, max.: 2.5 mm ² , Pitch: 5.08 mm, No. of poles: 14, 90°, Box
0594660000	TOP1.5GS15/90 5 2STI OR	PCB terminal, TOP connection, Soldered connection, Clamping range, max.: 2.5 mm ² , Pitch: 5.08 mm, No. of poles: 15, 90°, Box
0642360000	TOP1.5GS16/90 5 2STI OR	PCB terminal, TOP connection, Soldered connection, Clamping range, max.: 2.5 mm ² , Pitch: 5.08 mm, No. of poles: 16, 90°, Box
0594760000	TOP1.5GS17/90 5 2STI OR	PCB terminal, TOP connection, Soldered connection, Clamping range, max.: 2.5 mm ² , Pitch: 5.08 mm, No. of poles: 17, 90°, Box
1707040000	TOP1.5GS18/90 5 2STI OR	PCB terminal, TOP connection, Soldered connection, Clamping range, max.: 2.5 mm ² , Pitch: 5.08 mm, No. of poles: 18, 90°, Box
0594960000	TOP1.5GS19/90 5 2STI OR	PCB terminal, TOP connection, Soldered connection, Clamping range, max.: 2.5 mm ² , Pitch: 5.08 mm, No. of poles: 19, 90°, Box
0595060000	TOP1.5GS20/90 5 2STI OR	PCB terminal, TOP connection, Soldered connection, Clamping range, max.: 2.5 mm ² , Pitch: 5.08 mm, No. of poles: 20, 90°, Box
0595160000	TOP1.5GS21/90 5 2STI OR	PCB terminal, TOP connection, Soldered connection, Clamping range, max.: 2.5 mm ² , Pitch: 5.08 mm, No. of poles: 21, 90°, Box
0595260000	TOP1.5GS22/90 5 2STI OR	PCB terminal, TOP connection, Soldered connection, Clamping range, max.: 2.5 mm ² , Pitch: 5.08 mm, No. of poles: 22, 90°, Box
0595360000	TOP1.5GS23/90 5 2STI OR	PCB terminal, TOP connection, Soldered connection, Clamping range, max.: 2.5 mm ² , Pitch: 5.08 mm, No. of poles: 23, 90°, Box
0595460000	TOP1.5GS24/90 5 2STI OR	PCB terminal, TOP connection, Soldered connection, Clamping range, max.: 2.5 mm ² , Pitch: 5.08 mm, No. of poles: 24, 90°, Box