

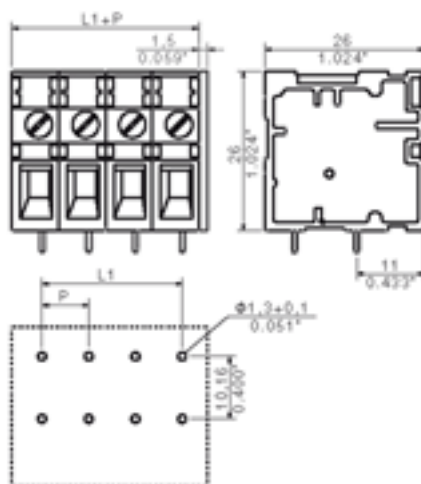
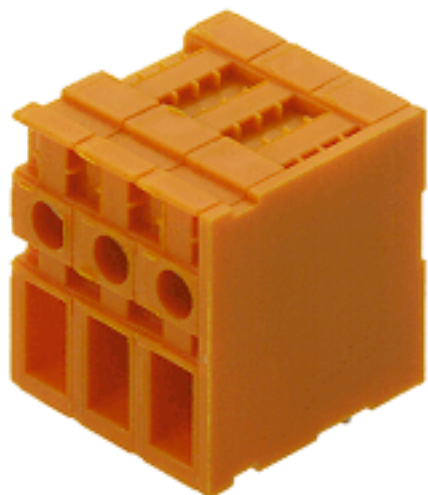
Excellent Integrated System Limited

Stocking Distributor

Click to view price, real time Inventory, Delivery & Lifecycle Information:

[Weidmüller](#)
[1759860000](#)

For any questions, you can email us directly:
sales@integrated-circuit.com


General ordering data

Order No.	1759860000
Part designation	TOP4GS11/90 7.62 OR
Version	PCB terminal, TOP connection, Soldered connection, Clamping range, max.: 6 mm ² , Pitch: 7.62 mm, No. of poles: 11, 90°, Box
EAN	4032248215911
Qty.	50 pc(s).

System parameters

Product family	System TOP4GS
Conductor connection system	TOP connection
Fitted to PCB	Soldered connection
Outgoing direction of conductor	90°
Pitch	7.62 mm
Pitch in inch	0.3 inch
No. of poles	11
Fitted by customer	no
No. of rows	1
Solder pin length	3.5 mm
Dia. of fitting hole	1.3 mm
Fitting hole tolerance	+ 0.1 mm
No. of solder pins per pole	2
Screwdriver blade	0.6 x 3.5
Screwdriver blade standard	DIN 5264
Tightening torque, min.	0.5 Nm
Tightening torque, max.	0.6 Nm
Clamping screw	M 3
Stripping length	13 mm
L1 in mm	76.2 mm
L1 in inch	3 inch

Material data

Insulating material	PA
Colour	orange

Material data

colour chart	Similar to RAL 2000
Insulating material group	I
Flammability class UL 94	V-2
CTI	>= 600
Contact base material	E-Cu
Contact surface	tinned
Storage temperature, min.	-25 °C
Storage temperature, max.	55 °C

Connectable conductors

Clamping range, min.	0.13 mm ²
Clamping range, max.	6 mm ²
AWG, min.	26
AWG, max.	10
Solid, min. H05(07) V-U	0.5 mm ²
Solid, max. H05(07) V-U	6 mm ²
Flexible, min. H05(07) V-K	0.5 mm ²
Flexible, max. H05(07) V-K	4 mm ²
With wire end ferrule, acc. to DIN 46 228/1, min.	0.5 mm ²
With wire end ferrule, acc. to DIN 46 228/1, max.	4 mm ²
w. plastic collar ferrule, DIN 46228 pt 4, min.	0.5 mm ²
w. plastic collar ferrule, DIN 46228 pt 4, max.	4 mm ²
Gauge to EN 60999 a x b; ø	2.8 mm x 2.4 mm;

DIN IEC rating data

Rated current, min. No. pins (Tu=20°C)	32 A
Rated current, min. No. pins (Tu=40°C)	32 A
Rated voltage for overvoltage class/pollution severity II/2	1,000 V
Rated voltage for overvoltage class/pollution severity III/2	630 V
Rated voltage for overvoltage class/pollution severity III/3	500 V
Rated impulse withstand voltage for overvoltage class/pollution severity II/2	4 kV
Rated impulse withstand voltage for overvoltage class/pollution severity III/2	4 kV
Rated impulse withstand voltage for overvoltage class/pollution severity III/3	4 kV

CSA rating data

Rated voltage (Use group D)	300 V
Rated current (Use group D)	10 A
AWG conductor (field wiring), min.	26
AWG conductor (field wiring), max.	10

UL 1059 rating data

Rated voltage (Use group D)	300 V
Rated current (Use group D)	10 A
AWG conductor, min.	26
AWG conductor, max.	10

UL 1059 rating data

Approvals

Approvals institutes



Downloads

CAD Library (P-CAD Format - Standard) TOP 4GS.LIB

Classifications

ETIM 2.0	NK
ETIM 3.0	EC001284
eClass 4.1	NK
eClass 5.0	NK
eClass 5.1	NK

Similar products

Order No.	Part designation	Version
0289660000	TOP4GS2/90 7.62 OR	PCB terminal, TOP connection, Soldered connection, Clamping range, max.: 6 mm ² , Pitch: 7.62 mm, No. of poles: 2, 90°, Box
0289760000	TOP4GS3/90 7.62 OR	PCB terminal, TOP connection, Soldered connection, Clamping range, max.: 6 mm ² , Pitch: 7.62 mm, No. of poles: 3, 90°, Box
0290160000	TOP4GS4/90 7.62 OR	PCB terminal, TOP connection, Soldered connection, Clamping range, max.: 6 mm ² , Pitch: 7.62 mm, No. of poles: 4, 90°, Box
1698740000	TOP4GS5/90 7.62 OR	PCB terminal, TOP connection, Soldered connection, Clamping range, max.: 6 mm ² , Pitch: 7.62 mm, No. of poles: 5, 90°, Box
1786410000	TOP4GS6/90 7.62 OR	PCB terminal, TOP connection, Soldered connection, Clamping range, max.: 6 mm ² , Pitch: 7.62 mm, No. of poles: 6, 90°, Box
1647300000	TOP4GS7/90 7.62 OR	PCB terminal, TOP connection, Soldered connection, Clamping range, max.: 6 mm ² , Pitch: 7.62 mm, No. of poles: 7, 90°, Box
1786420000	TOP4GS8/90 7.62 OR	PCB terminal, TOP connection, Soldered connection, Clamping range, max.: 6 mm ² , Pitch: 7.62 mm, No. of poles: 8, 90°, Box
1786430000	TOP4GS9/90 7.62 OR	PCB terminal, TOP connection, Soldered connection, Clamping range, max.: 6 mm ² , Pitch: 7.62 mm, No. of poles: 9, 90°, Box
1786440000	TOP4GS10/90 7.62 OR	PCB terminal, TOP connection, Soldered connection, Clamping range, max.: 6 mm ² , Pitch: 7.62 mm, No. of poles: 10, 90°, Box

1786450000 TOP4GS12/90 7.62 OR

PCB terminal, TOP connection, Soldered connection, Clamping range, max.: 6 mm², Pitch: 7.62 mm, No. of poles: 12, 90°, Box