

Excellent Integrated System Limited

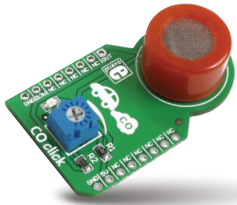
Stocking Distributor

Click to view price, real time Inventory, Delivery & Lifecycle Information:

[MikroElektronika](#)
[MIKROE-1626](#)

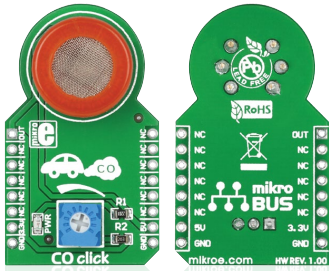
For any questions, you can email us directly:

sales@integrated-circuit.com



CO click™

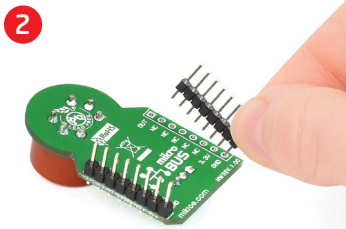
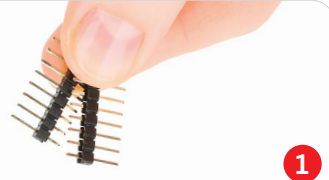
1. Introduction



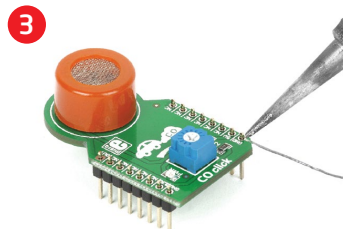
CO click™ is a simple solution for adding a high-sensitivity Carbon monoxide sensor to your design. The board features an MQ-7 sensor with a SnO₂ gas sensing layer, a calibration potentiometer, a mikroBUS™ host socket, two jumpers and a power indicator LED. CO click™ communicates with the target board through mikroBUS™ AN (OUT) line. CO click™ is designed to use a 5V power supply only.

2. Soldering the headers

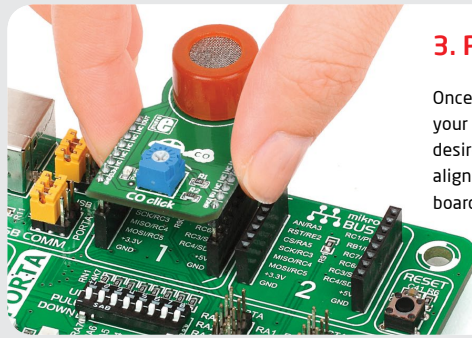
Before using your click™ board, make sure to solder 1x8 male headers to both left and right side of the board. Two 1x8 male headers are included with the board in the package.



Turn the board upside down so that the bottom side is facing you upwards. Place shorter pins of the header into the appropriate soldering pads.



Turn the board upward again. Make sure to align the headers so that they are perpendicular to the board, then solder the pins carefully.



3. Plugging the board in

Once you have soldered the headers your board is ready to be placed into the desired mikroBUS™ socket. Make sure to align the cut in the lower-right part of the board with the markings on the silkscreen at the mikroBUS™ socket. If all the pins are aligned correctly, push....



4. Essential features

CO click™ can detect Carbon monoxide levels in concentrations from 20ppm to 2000ppm. The MQ-7 CO sensor unit has a sensor layer made of Tin dioxide (SnO₂), an inorganic compound which has lower conductivity in clean air. The conductivity increases as the levels of CO rise. CO click™ also contains a potentiometer that lets you adjust the sensor for the environment. For precise calibration the sensor needs to preheat (once powered up, it takes 48h to reach the right temperature).

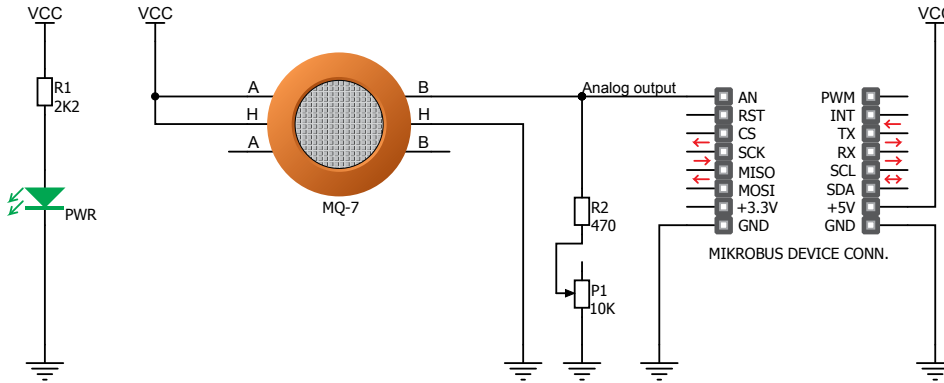


CO click Manual
 ver. 1.00

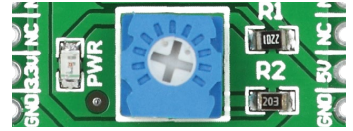


0 100000 026304

5. CO click™ board schematic



6. Calibration potentiometer



To calibrate CO click™ for optimum performance, use the on-board potentiometer to adjust the Load Resistance of the sensor circuit.

7. Code examples

Once you have done all the necessary preparations, it's time to get your click™ board up and running. We have provided examples for mikroC™, mikroBasic™ and mikroPascal™ compilers on our **Libstock** website. Just download them and you are ready to start.



8. Support

MikroElektronika offers **free tech support** (www.mikroe.com/support/) until the end of the product's lifetime, so if something goes wrong, we're ready and willing to help!

