

Excellent Integrated System Limited

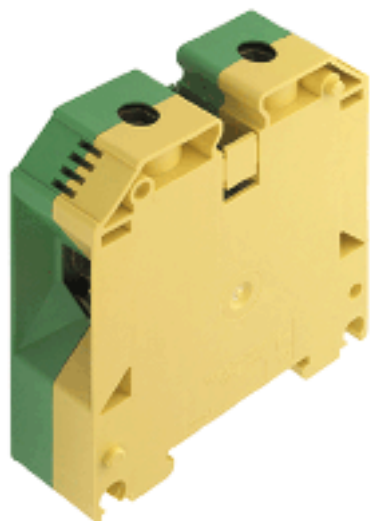
Stocking Distributor

Click to view price, real time Inventory, Delivery & Lifecycle Information:

[Weidmüller](#)
[9512200000](#)

For any questions, you can email us directly:

sales@integrated-circuit.com



General ordering data

Order No.	9512200000
Part designation	WPE 70N/35
Version	Earth terminal, 70 mm ² , Screw connection, Wemid, green/yellow, TS 35
EAN	4008190403881
Qty.	10 pc(s).

Product notes

Note, technical data	For 50 - 95 mm ² , the TS 35x15 (copper, 2.3mm thick) rail should be used.
Product description	Their small size compared to the respective rated cross-section makes the modular terminals with the compact design very popular.
Note, accessories	Rail support for insulated installation of terminal rail "SH 2" order no. 0494920000 (10 pcs)

PT OKIECEX/ATEX rating data

EU-type examination certificate	KEMA98ATEX1683U
Download, German	KEMA98ATEX1683U_d.pdf
Download English	KEMA98ATEX1683U_e.pdf
IECEX Certificate of Conformity	IECEXULD05.0008U
Download	IECEXULD05.0008U_e.pdf
ATEX conductor cross-section	70 mm ²
IECEX conductor cross-section	70 mm ²
Voltage when using cross-connections	CrossConnectionGuide.pdf
Operating temperature range	For operating temperature range see EC Design Test Certificate / IEC Ex-Certificate of Conformity
Marking EN 60079-7	Ex e II
Marking ATEX Directive 94/9/EC	Ex II 2 G D

Additional technical data

Colour of insulating material	green/yellow
Connection direction	on side
End plate required	No

Additional technical data

Explosion-tested version "Ex e"	Yes
Installation advice	TS 35
Insulating material	Wemid
Levels cross-connected internally	No
No. of identical terminals	1
No. of levels	1
No. of terminal strips per level	2
Open sides	closed
Operating temperature range	- 50 °C, + 120 °C
Product family	W-Series
Type of connection	Screwed
Type of mounting	Snap-on
UL 94 flammability rating of insulation material	V-0
Version	PE terminal

CSA rating data

Min. cross-section (CSA)	AWG 6
Max. cross-section (CSA)	AWG 2/0

Conductors for clamping (rated connection)

Clamping range, min.	10 mm ²
Clamping range, max.	95 mm ²
Type of connection	Screw connection
2nd type of connection	screwed
Connection direction	on side
No. of connections	2
Stripping length	22 mm
Clamping screw	M 8
Blade size	S6 (DIN 6911)
Tightening torque range	8.0...10.0 Nm
Gauge to IEC 60947-1	B11
Solid, min.	10 mm ²
Solid, max.	16 mm ²
Stranded, min.	10 mm ²
Stranded, max.	95 mm ²
Flexible, min.	10 mm ²
Flexible, max.	70 mm ²
Flexible with ferrule, min. (DIN 46228/1)	10 mm ²
Flexible with ferrule, max. (DIN 46228/1)	70 mm ²
Flexible, min., ferrule with plastic collar (DIN 46228 pt 4)	10 mm ²
Flexible, max., ferrule with plastic collar (DIN 46228 pt 4)	70 mm ²
AWG conductor size, min.	AWG 6
AWG conductor size, max.	AWG 2/0
AWG conductor size, min.	13.3 mm ²
AWG conductor size, max.	67.44 mm ²

Dimensions

Width	20.5 mm
Height of lowest version	86 mm

Dimensions

Length	75 mm
TS 35 offset	37.5 mm

PE rating data

Centre screw on PE terminals	M 5
PEN function	Yes
Pollution severity	3
Rated cross-section	70 mm ²
Rated impulse withstand voltage to adjacent terminal	8 kV
Rated short-time current	8400 A (70 mm ²)
Rated voltage for adjacent terminal	1,000 V
Standards	IEC 60947-7-2
Tightening torque range for fixing screw	2.0...4.0 Nm

UL rating data

Min. cross-section (UL)	AWG 6
Max. cross-section (UL)	AWG 2/0

Approvals

Approvals institutes



Downloads

DXF	32028_WPE_70N-35_DXF.dxf
STEP	9512200000_32028_WPE_70N_STP.stp

Classifications

ETIM 2.0	EC000901
ETIM 3.0	EC000901
eClass 4.1	27-14-03-05
eClass 5.0	27-14-03-05
eClass 5.1	27-14-03-05

Similar products

Order No.	Part designation	Version
1016200000	WPE 2.5N	Earth terminal, 2.5 mm ² , Screw connection, Wemid, green/yellow, TS 35

1041620000	WDK 2.5N PE	Earth terminal, 2.5 mm ² , Screw connection, Wemid, green/yellow, TS 35
1042700000	WPE 4N	Earth terminal, 4 mm ² , Screw connection, Wemid, green/yellow, TS 35
1041920000	WDK 4N PE	Earth terminal, 4 mm ² , Screw connection, Wemid, green/yellow, TS 35
1019100000	WPE 16N	Earth terminal, 16 mm ² , Screw connection, Wemid, green/yellow, TS 35
1717740000	WPE 35N	Earth terminal, 35 mm ² , Screw connection, Wemid, green/yellow, TS 35
1846040000	WPE 50N	Earth terminal, 50 mm ² , Screw connection, Wemid, green/yellow, TS 35
1846030000	WPE 95N/120N	Earth terminal, 95 mm ² , Screw connection, Wemid, green/yellow, TS 35