

## Excellent Integrated System Limited

Stocking Distributor

Click to view price, real time Inventory, Delivery & Lifecycle Information:

[Chip Quik](#)  
[PA0116](#)

For any questions, you can email us directly:  
[sales@integrated-circuit.com](mailto:sales@integrated-circuit.com)

# PA0116 *Proto Advantage*

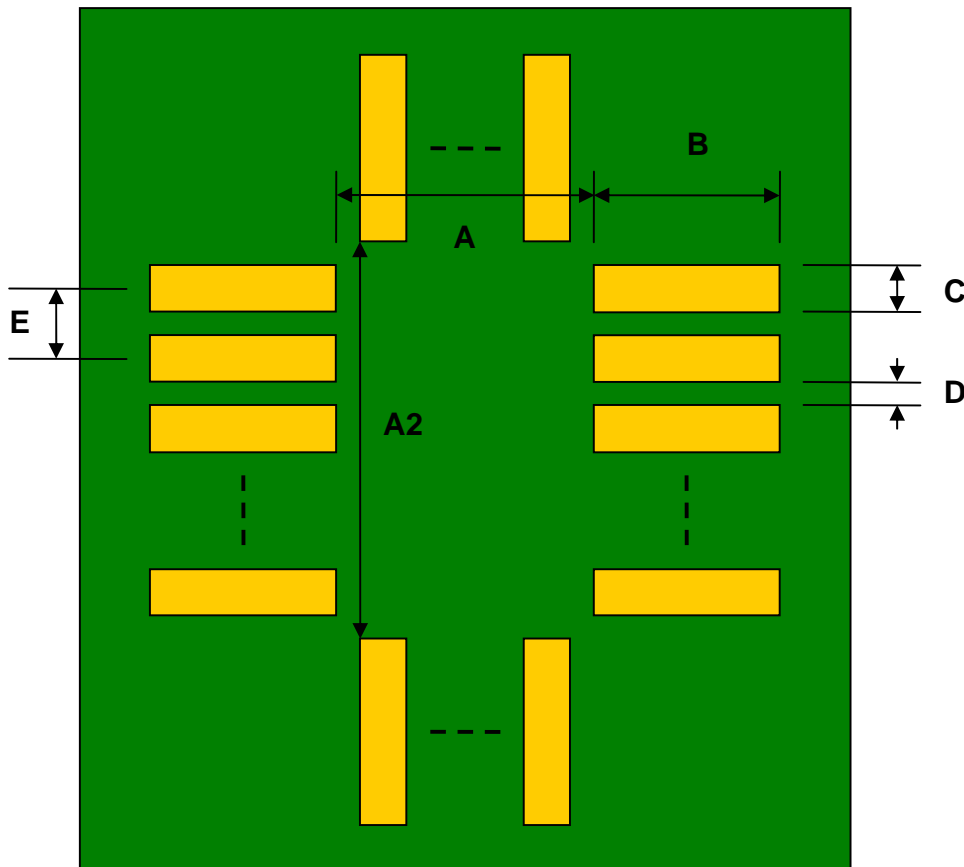
Datasheet revision 1.0

[www.Proto-Advantage.com](http://www.Proto-Advantage.com)

## CSP-24/UCSP-24 to DIP-24 SMT Adapter (0.5 mm pitch, 3.5 x 4.5 mm body)

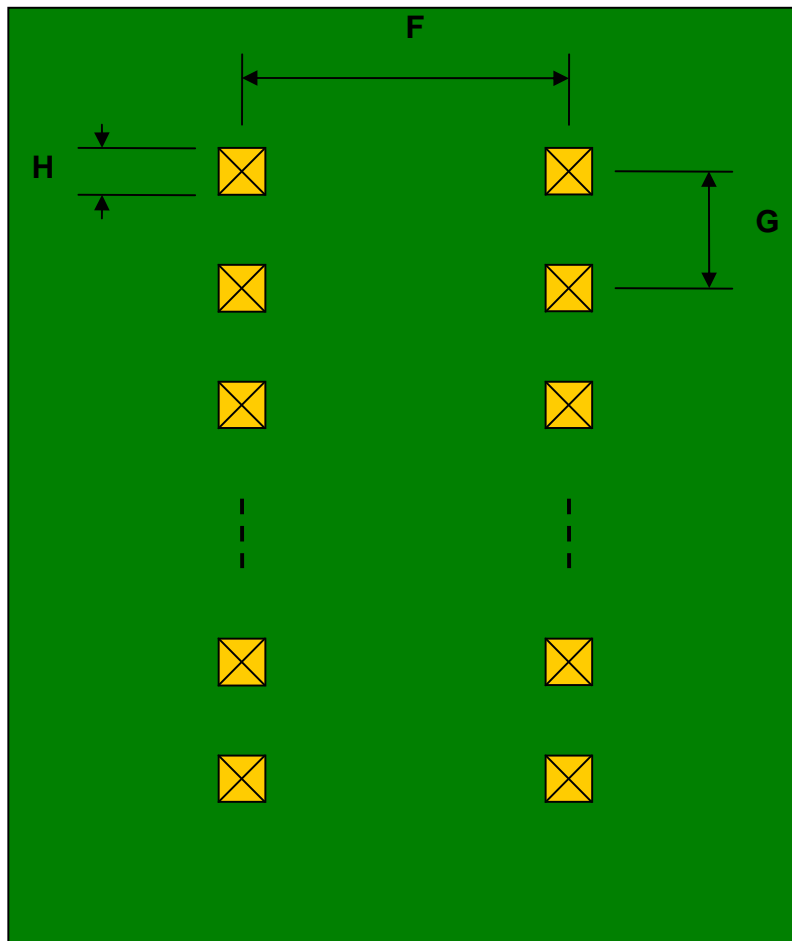
REF.	DIMENSIONS					
	mm			inches		
	MIN.	TYP.	MAX.	MIN.	TYP.	MAX.
A		2.50				
A2		3.50				
B		2.00				
C		0.30				
D		0.20				
E		0.50				
F					0.600	
G					0.100	
H					0.025	

Top View (SMT Footprint)



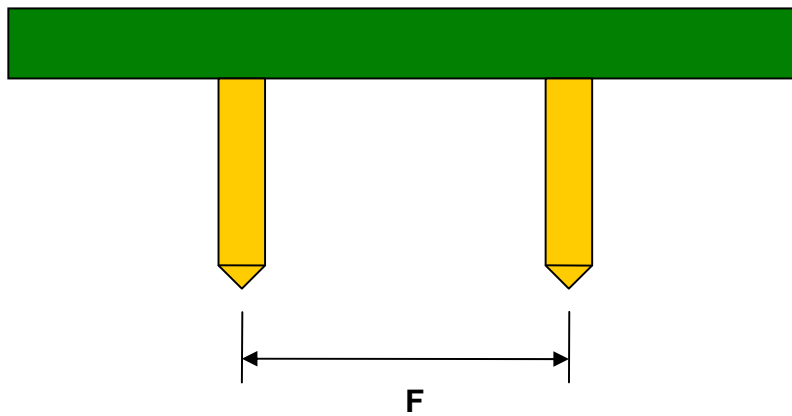
(Representative drawing only - not to scale)

**Bottom View (DIP Pins)**



(Representative drawing only - not to scale)

**Side View (DIP Pins)**



(Representative drawing only - not to scale)