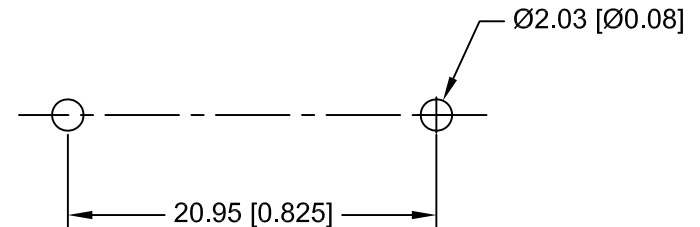
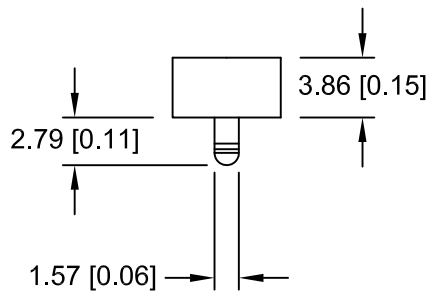
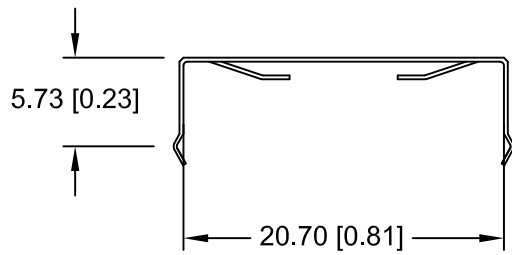
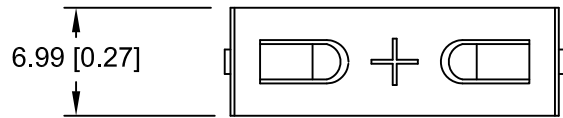



Date	SYM	REVISION RECORD	AUTH	DR.	CK.
05/31/13	A	ADDED DIM. 2.79	T.B.	B.S.	
07/11/14	B	ADDED WEIGHT INFO.	T.B.	B.S.	



PCB LAYOUT

NOTES:

1. MATERIAL:
0.25mm PHOSPHOR BRONZE, NICKEL PLATED.
2. ROHS 2 COMPLIANT
3. APPROXIMATE WEIGHT: 0.48g

Tolerance (Except as noted)	 Memory Protection Devices, Inc 200 Broad Hollow Road, Farmingdale, New York 11735	Scale	Drawn By B.S.
			Approved By T.B.
decimal ±.5 (.020)	Title CR2032 BATTERY STRAP, THROUGH HOLE MOUNT		
Fractional ± .8 (.030)	Date 07/11/14	Drawing Number BC-2400	
Angular ± 3°			