

## Excellent Integrated System Limited

Stocking Distributor

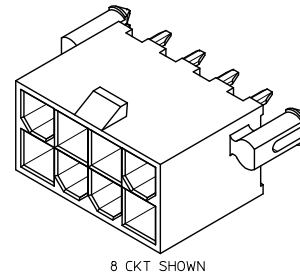
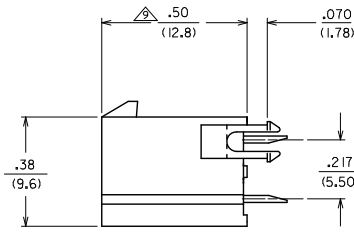
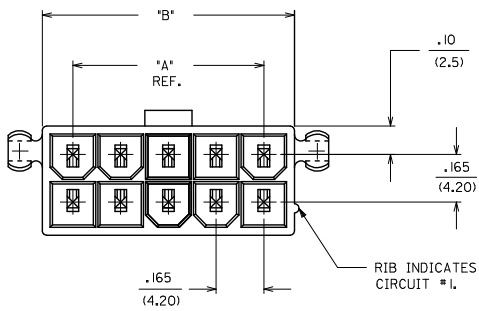
Click to view price, real time Inventory, Delivery & Lifecycle Information:

[Molex Connector Corporation](#)  
[0423820024](#)

For any questions, you can email us directly:

[sales@integrated-circuit.com](mailto:sales@integrated-circuit.com)

13 12 11 10 9 8 7 6 5 4 3 2 1

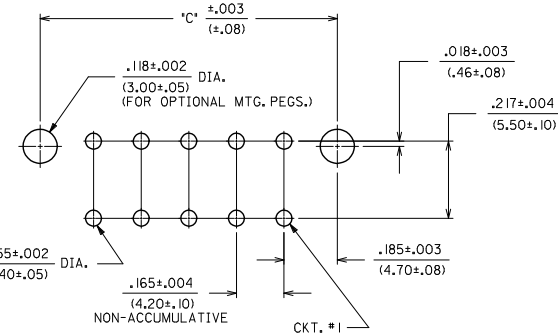
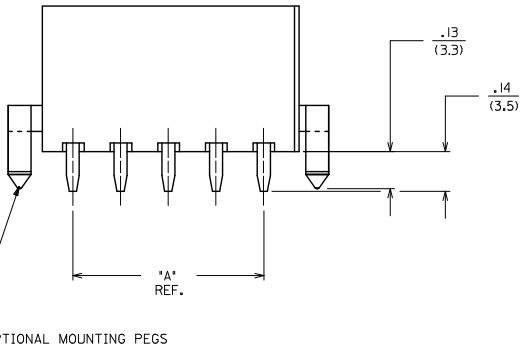


8 CKT SHOWN

CIRCUIT SIZE	DIM. "A"	DIM. "B"	DIM. "C"
2	—	.21 (5.4)	.370 (9.40)
4	.17 (4.2)	.38 (9.6)	.535 (13.60)
6	.33 (8.4)	.54 (13.8)	.701 (17.80)
8	.50 (12.6)	.71 (18.0)	.866 (22.00)
10	.66 (16.8)	.87 (22.2)	1.031 (26.20)
12	.83 (21.0)	1.04 (26.4)	1.197 (30.40)
14	.99 (25.2)	1.20 (30.6)	1.362 (34.60)
16	1.16 (29.4)	1.37 (34.8)	1.528 (38.80)
18	1.32 (33.6)	1.54 (39.0)	1.693 (43.00)
20	1.49 (37.8)	1.70 (43.2)	1.858 (47.20)
22	1.65 (42.0)	1.87 (47.4)	2.024 (51.40)
24	1.82 (46.2)	2.03 (51.6)	2.189 (55.60)

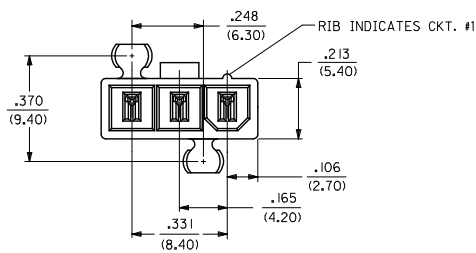
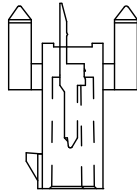
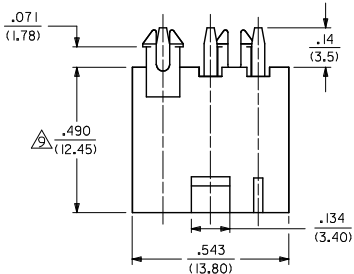
NOTES

- HOUSING MATERIAL:  
A - NYLON 6/6, UNFILLED U.L. 94V-2, COLOR: NATURAL.  
B - NYLON 6/6, UNFILLED U.L. 94V-0, COLOR: NATURAL.  
TERMINAL MATERIAL: BRASS ALLOY
- TERMINAL PLATING  
GS - .000030 MIN. SELECT GOLD AND  
.000100 MIN. SELECT MATTE TIN  
OVER .000050 MIN. NICKEL OVERALL.  
S - .000100 MIN. BRIGHT TIN OVER .000050 MIN. NICKEL OVERALL.  
C - .000100 MIN. MATTE TIN OVER .000050 MIN. NICKEL OVERALL.
- PRODUCT SPECIFICATION: PS-5556-001
- PACKAGING SPECIFICATION: SEE CHART
- PART MATES WITH MINI-FIT JR. RECEPTACLE #5557.
- CONNECTOR ASSEMBLIES ARE NOT TO BE MATED OR UNMATED WHILE CIRCUITS ARE LIVE.
- HOUSING STYLE  
1 - WITHOUT PEGS  
3 - WITH PEGS
- PARTS ARE NOT DESIGNED FOR CURRENT SHARING.
- THIS DIMENSION APPLIES TO DUAL AND SINGLE ROW 4 THRU 24 CIRCUIT PARTS  
THIS DIMENSION IS .490/(12.45) FOR 3 CIRCUIT SINGLE ROW PARTS ONLY.
- PART CONFORMS TO CLASS "B" REQUIREMENTS OF COSMETIC SPECIFICATION PS-45499-002
- 4 CIRCUIT PARTS WILL HAVE PEG DESIGN A. 5 CIRCUIT PARTS WILL HAVE PEG DESIGN B.

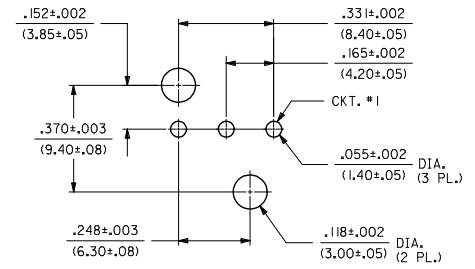


RECOMMENDED P.C. BOARD LAYOUT  
VIEWED FROM COMPONENT SIDE

REMOVE OBS P/NS EC NO: UCP2015-1281 DRAWN: JDFOX 2014/09/28 CHKD: BELL 2014/09/28 APPR: SMITH 2014/11/20	QUALITY SYMBOLS ▽=0 ▽=0 ▽=0	GENERAL TOLERANCES (UNLESS SPECIFIED)		DIMENSION STYLE IN/MM		SCALE 4:1	DESIGN UNITS METRIC	THIRD ANGLE PROJECTION	
		4 PLACES ±---	±---	DRAWN BY R JF	DATE 10/04/88	TITLE VERTICAL HDR. ASSEMBLIES WITH MIXED TERM. PLATING (MINI-FIT JR. SERIES) <b>molex</b> DOCUMENT NO. SDA-42382-**** SHEET NO. 1 OF 3			
		3 PLACES ±---	±.015	CHECKED BY JTR	DATE 10/04/88				
		2 PLACES ±0.38	±.020	APPROVED BY SMITH	DATE 2011/01/17				
1 PLACE ±0.50	±---	MATERIAL NO.							
0 PLACE ±	±	ANGULAR ±1/2°		SEE CHART		THIS DRAWING CONTAINS INFORMATION THAT IS PROPRIETARY TO MOLEX INCORPORATED AND SHOULD NOT BE USED WITHOUT WRITTEN PERMISSION			



3-CIRCUIT VERTICAL SINGLE ROW HEADER ASSEMBLY  
(PART SHOWN FULLY LOADED)



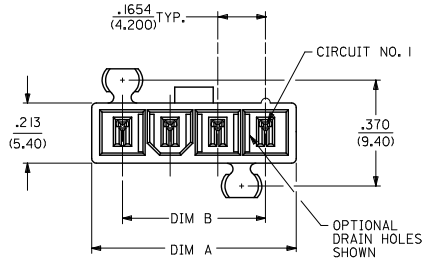
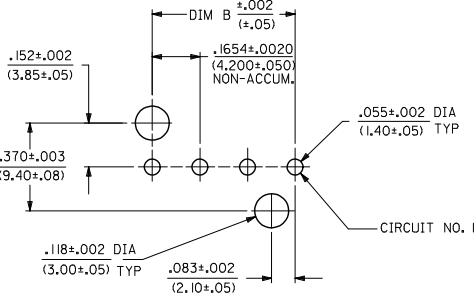
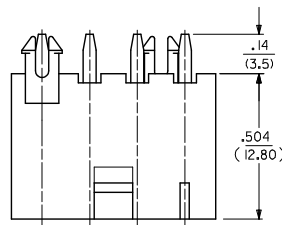
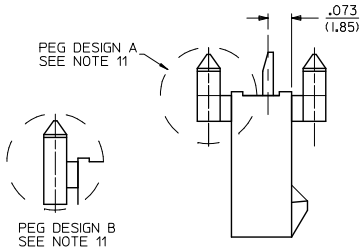
RECOMMENDED P.C. BOARD LAYOUT FOR 3-CKT. HEADER WITH PEGS.  
VIEWED FROM COMPONENT SIDE

SEE SHEET 1 EC NO: UCP2015-1281 DRAWN: JFOX 2014/09/28 CHECKED: BELL 2014/09/28 APPROVED: SMITH 2014/11/20	QUALITY SYMBOLS ∇=0 ∇=0 ∇=0	GENERAL TOLERANCES (UNLESS SPECIFIED)		DIMENSION STYLE IN/MM		SCALE 4:1	DESIGN UNITS METRIC	THIRD ANGLE PROJECTION
		4 PLACES ± --- ± --- 3 PLACES ± --- ± .015 2 PLACES ± 0.38 ± .020 1 PLACE ± 0.50 ± --- 0 PLACE ± ±	mm INCH	DRAWN BY R JF	DATE 10/04/88	TITLE VERTICAL HDR. ASSEMBLIES WITH MIXED TERM. PLATING (MINI-FIT JR. SERIES)		
L8 REV	DESCRIPTION	ANGULAR ± 1/2°		MATERIAL NO. SEE CHART		DOCUMENT NO. SDA-42382-****		SHEET NO. 2 OF 3
		DRAFT WHERE APPLICABLE MUST REMAIN WITHIN DIMENSIONS		THIS DRAWING CONTAINS INFORMATION THAT IS PROPRIETARY TO MOLEX INCORPORATED AND SHOULD NOT BE USED WITHOUT WRITTEN PERMISSION				

PART NO.	ENG. NO.	CKT SIZE	HSG ROW STYLE	CHARACTERISTIC DESCRIPTION	PACKAGING PER	TERMINAL PLATING REQUIRED AT EACH CIRCUIT LOCATION: V = VOID																							
						1	2	3	4	5	6	7	8	9	10	11	12	13	14	15	16	17	18	19	20	21	22	23	24
423820022	A-42382-0022	05	SINGLE	05B3C	TBD	S	V	V	S	V	-	-	-	-	-	-	-	-	-	-	-	-	-	-	-	-			
423820023	A-42382-0023	04	SINGLE	04A3C	TBD	S	V	V	S	-	-	-	-	-	-	-	-	-	-	-	-	-	-	-	-	-			
423820024	A-42382-0024	05	SINGLE	05B3C	TBD	S	V	V	S	S	-	-	-	-	-	-	-	-	-	-	-	-	-	-	-	-			
423820025	A-42382-0025	04	SINGLE	04A3C	PK-5566-002	S	V	V	S	-	-	-	-	-	-	-	-	-	-	-	-	-	-	-	-	-			
423820026	42382-0026	05	SINGLE	05B3C	PK-5566-002	S	V	S	V	S	-	-	-	-	-	-	-	-	-	-	-	-	-	-	-	-			
423820027	42382-0027	08	DUAL	08A1C	PK-5566-001	S	V	V	S	S	V	V	S	-	-	-	-	-	-	-	-	-	-	-	-	-			
423820028	42382-0028	05	SINGLE	05B3D	PK-5566-002	C	V	V	V	C	-	-	-	-	-	-	-	-	-	-	-	-	-	-	-	-			
423820029	42382-0029	05	SINGLE	05B3A	PK-5566-002	GS	V	GS	V	GS	-	-	-	-	-	-	-	-	-	-	-	-	-	-	-	-			
423820030	42382-0030	08	DUAL	08B3A	PK-5566-001	GS	V	GS	V	V	GS	V	GS	-	-	-	-	-	-	-	-	-	-	-	-	-			
423820031	42382-0031	18	DUAL	18B1D	PK-5566-001	C	C	V	C	C	V	C	C	V	C	C	V	C	C	V	C	C	-	-	-	-	-		

CHARACTERISTICS LEGEND:

- CIRCUIT SIZE (02-24)
- HOUSING MATERIAL
  - A = 94V-2,NATURAL
  - B = 94V-0,NATURAL
- HOUSING STYLE
  - 1 = W/O PEGS
  - 3 = W/ PEGS
- PLATING
  - A = 30 M.I. SEL. GOLD
  - C = 100 M.I. BRIGHT TIN OVER NICKEL.
  - D = 100 M.I. MATTE TIN OVER NICKEL.



VIEWS APPLY TO 4 AND 5 CIRCUIT SINGLE ROW HEADER ASSEMBLY (PART SHOWN FULLY LOADED)

CKT SIZE	DIM A	DIM B
4	.709 (18.00)	.496 (12.60)
5	.874 (22.20)	.661 (16.80)

SEE SHEET 1 EC NO: UCP2015-1281 DRWN: JDFX 2014/09/26 CHKD: JELL 2014/09/26 APPR: SMITH 2014/11/20 L8 REV	QUALITY SYMBOLS 	GENERAL TOLERANCES (UNLESS SPECIFIED) <table border="1"> <thead> <tr> <th></th> <th>mm</th> <th>INCH</th> </tr> </thead> <tbody> <tr> <td>4 PLACES</td> <td>± .015</td> <td>± .0006</td> </tr> <tr> <td>3 PLACES</td> <td>± .015</td> <td>± .0006</td> </tr> <tr> <td>2 PLACES</td> <td>± 0.38</td> <td>± .020</td> </tr> <tr> <td>1 PLACE</td> <td>± 0.50</td> <td>± .020</td> </tr> <tr> <td>0 PLACE</td> <td>±</td> <td>±</td> </tr> </tbody> </table>		mm	INCH	4 PLACES	± .015	± .0006	3 PLACES	± .015	± .0006	2 PLACES	± 0.38	± .020	1 PLACE	± 0.50	± .020	0 PLACE	±	±	DIMENSION STYLE IN/MM	SCALE 4:1	DESIGN UNITS METRIC	THIRD ANGLE PROJECTION
		mm	INCH																					
	4 PLACES	± .015	± .0006																					
	3 PLACES	± .015	± .0006																					
2 PLACES	± 0.38	± .020																						
1 PLACE	± 0.50	± .020																						
0 PLACE	±	±																						
DRAWN BY: R JF DATE: 10/04/88 CHECKED BY: JTR DATE: 10/04/88 APPROVED BY: F SMITH DATE: 2011/01/17		MATERIAL NO. SEE CHART DOCUMENT NO. SDA-42382-****		TITLE VERTICAL HDR. ASSEMBLIES WITH MIXED TERM. PLATING (MINI-FIT JR. SERIES)		SHEET NO. 3 OF 3																		
THIS DRAWING CONTAINS INFORMATION THAT IS PROPRIETARY TO MOLEX INCORPORATED AND SHOULD NOT BE USED WITHOUT WRITTEN PERMISSION																								