

Excellent Integrated System Limited

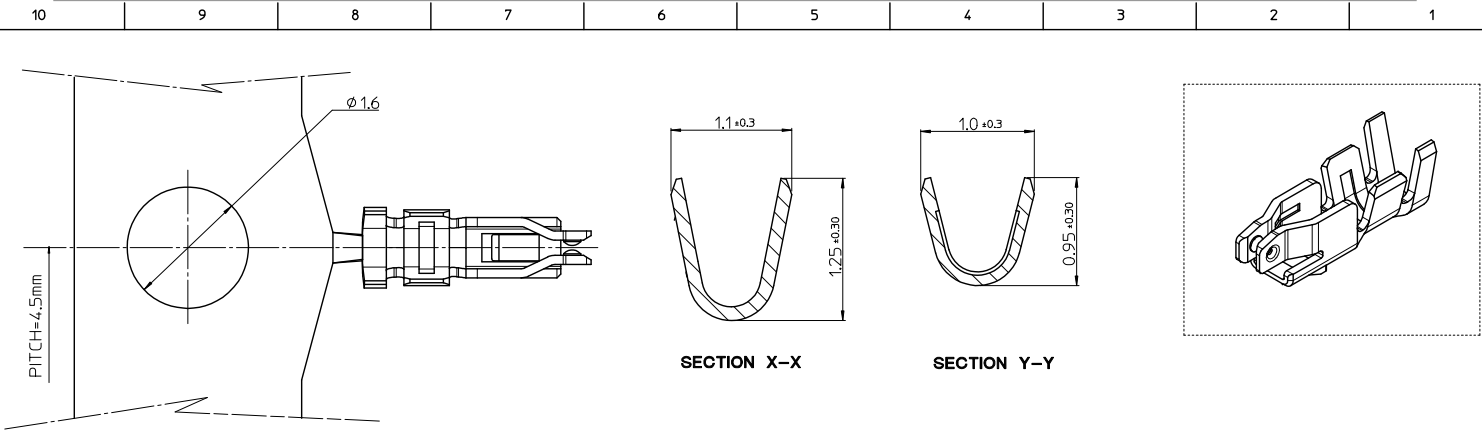
Stocking Distributor

Click to view price, real time Inventory, Delivery & Lifecycle Information:

[Molex Connector Corporation](#)
[1045398002](#)

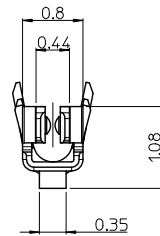
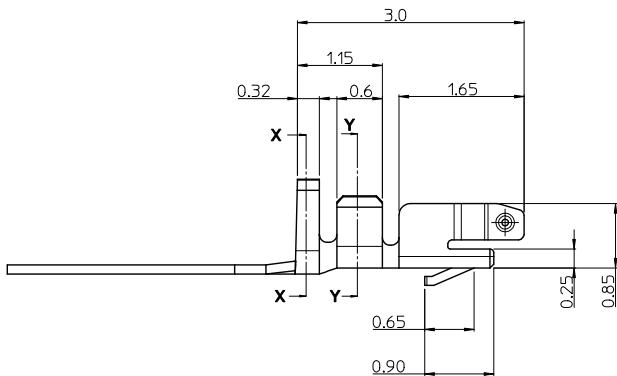
For any questions, you can email us directly:

sales@integrated-circuit.com



NOTES.

- ① 1. APPLICABLE HOUSING : 104128-0400/0500/0610/0620
104142-1000
2. MATERIAL : PHOSPHOR BRONZE, 0.12mm THICKNESS
PRE-TIN PLATED
0.8 μm MINIMUM, TIN (Sn) OVER
0.3 μm MINIMUM, COPPER
3. APPLICABLE WIRE RANGE : AWG#30~AWG#32
4. PACKAGING SPECIFICATION : PK-104539-001



ORDER NO 104539-8002

REVISED EC NO: KOR2014-0105 DRAWN: SEHONG03 2014/12/12 CHKD: SICHU 2014/12/12 APPR: YSKIM02 2014/12/24 REV A3	QUALITY SYMBOLS	GENERAL TOLERANCES (UNLESS SPECIFIED)	DIMENSION STYLE	SCALE	DESIGN UNITS	THIRD ANGLE PROJECTION
	▼=0 ▽=0	mm INCH 4 PLACES ± --- ± --- 3 PLACES ± --- ± --- 2 PLACES ± 0.15 ± --- 1 PLACE ± 0.2 ± --- ANGULAR ± --- °	MM ONLY	20:1	METRIC	TITLE 1.0/1.25MM WTB CONN. RECEPTACLE TERMINAL
		DRAFT WHERE APPLICABLE MUST REMAIN WITHIN DIMENSIONS	DRAWN BY DATE JHPARK01 2011/07/25 CHECKED BY DATE SH. CHU 2011/07/25 APPROVED BY DATE YUNSIKKIM 2011/09/21			MOLEX INCORPORATED MATERIAL NO. 1045398002 DOCUMENT NO. SD-104539-001
			THIS DRAWING CONTAINS INFORMATION THAT IS PROPRIETARY TO MOLEX INCORPORATED AND SHOULD NOT BE USED WITHOUT WRITTEN PERMISSION			SHEET NO. 1 OF 1