

## Excellent Integrated System Limited

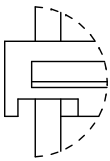
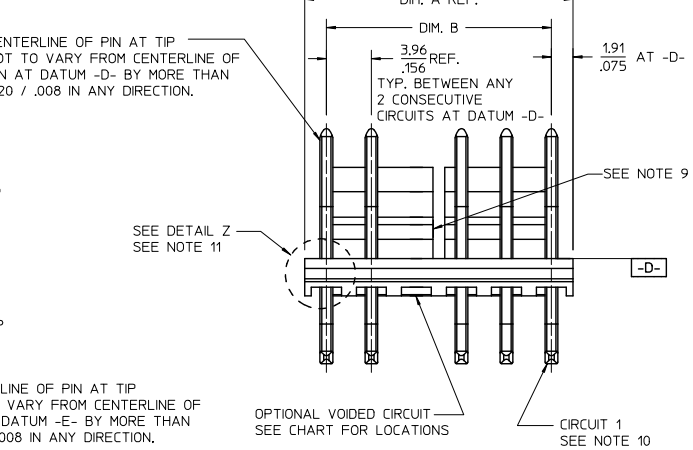
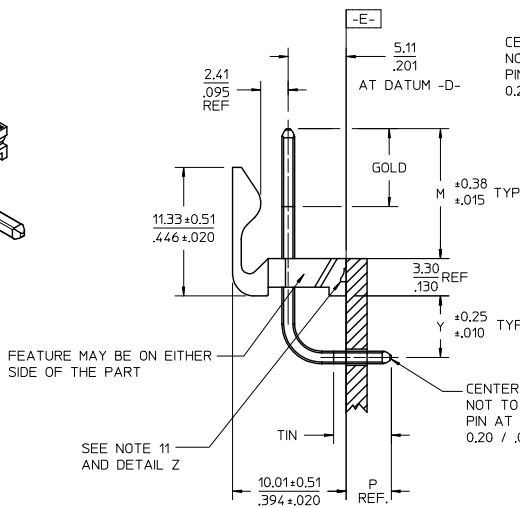
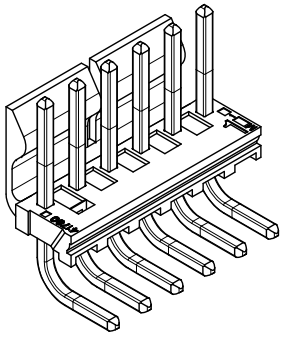
Stocking Distributor

Click to view price, real time Inventory, Delivery & Lifecycle Information:

[Molex Connector Corporation](#)  
[1718143005](#)

For any questions, you can email us directly:

[sales@integrated-circuit.com](mailto:sales@integrated-circuit.com)



DETAIL Z  
SCALE 8:1

NOTES:  
1. MATERIAL: HOUSING: NYLON, UL94V-2, IEC 60335-1 5TH EDITION GLOW WIRE CAPABLE. COLOR: BLACK  
PINS: BRASS

2. FINISH: (197) = OVERALL REFLOWED MATTE TIN: 0.00152/0.00060 MIN. OVER 0.00127/0.00050 MIN. NICKEL OVERALL.  
(208) = SELECT GOLD: 0.00038/0.00015 MIN. SELECT MATTE TIN: 0.00254/0.000100 MIN. BOTH OVER 0.00127/0.00050 MIN NICKEL.  
(228) = SELECT GOLD: 0.00076/0.00030 MIN. SELECT MATTE TIN: 0.00254/0.000100 MIN. BOTH OVER 0.00127/0.00050 MIN NICKEL.

3. PRODUCT SPECIFICATION: PS-171813-0001, PS-171813-0002  
4. PACKAGING INFORMATION: SEE CHART

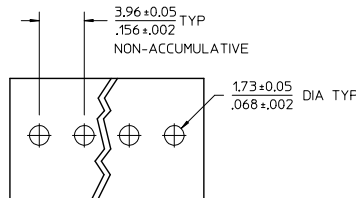
5. SOLDERABILITY: PER SMES-152.  
6. PIN PUSH-OUT FORCE: PRIOR TO SOLDERING, A 3 LB. MINIMUM FORCE IN EITHER DIRECTION

7. PARTS ARE STACKABLE END TO END ON 3.96/.156 CENTERS.  
8. THIS PART CONFORMS TO CLASS B REQUIREMENTS OF COSMETIC SPECIFICATION PS-45499-002.

9. SLOTS ON BACKWALL ARE BETWEEN CIRCUITS. SEE CHART FOR LOCATION.

10. CIRCUIT 1 DESIGNATION IS USED TO DEFINE VOID LOCATION. CIRCUIT 1 MAY OR MAY NOT LINE UP WITH CIRCUIT 1 ON THE MATING HOUSING.

11. FEATURE MAY OR MAY NOT EXTEND ACROSS THE ENTIRE FACE OF THE PART. SEE DETAIL Z.



PCB LAYOUT: COMPONENT SIDE

CIRCUIT SIZE	DIM. A	DIM. B	SLOT LOCATION BETWEEN CIRCUITS
2	7.77 .306	3.96±0.05 .156±.002	NONE
3	11.73 .462	7.92±0.10 .312±.004	NONE
4	15.70 .618	11.89±0.15 .468±.006	NONE
5	19.66 .774	15.85±0.15 .624±.006	NONE
6	23.62 .930	19.81±0.18 .780±.007	3 & 4
7	27.58 1.086	23.77±0.18 .936±.007	4 & 5
8	31.55 1.242	27.74±0.20 1.092±.008	4 & 5
9	35.51 1.398	31.70±0.20 1.248±.008	5 & 6
10	39.47 1.554	35.66±0.23 1.404±.009	5 & 6
11	43.43 1.710	39.62±0.23 1.560±.009	6 & 7
12	47.40 1.866	43.59±0.25 1.716±.010	4 & 5 8 & 9

QUALITY SYMBOLS	GENERAL TOLERANCES (UNLESS SPECIFIED)	DIMENSION STYLE		SCALE	DESIGN UNITS	THIRD ANGLE PROJECTION
		MM/IN	DATE			
4 PLACES ± .010	mm INCH	DRAWN BY	DATE	4:1	INCH	THIRD ANGLE PROJECTION
3 PLACES ± .010	mm INCH	DATE	DATE			
2 PLACES ± 0.25 ± .015	mm INCH	CHECKED BY	DATE	TITLE: KK RPC .156 HEADER ASSY FRICTION LOCK RIGHT ANGLE W/O PEGS molex DOCUMENT NO. SD-171814-0001 SHEET NO. 1 OF *		
1 PLACE ± 0.38 ± .010	mm INCH	DATE	DATE			
0 PLACE ± .010	mm INCH	APPROVED BY	DATE	MATERIAL NO. SEE CHART INCORPORATED AND SHOULD NOT BE USED WITHOUT WRITTEN PERMISSION		
ANGULAR ± 1/2°	mm INCH	DATE	DATE			