

Excellent Integrated System Limited

Stocking Distributor

Click to view price, real time Inventory, Delivery & Lifecycle Information:

[Molex Connector Corporation](#)
[1726732006](#)

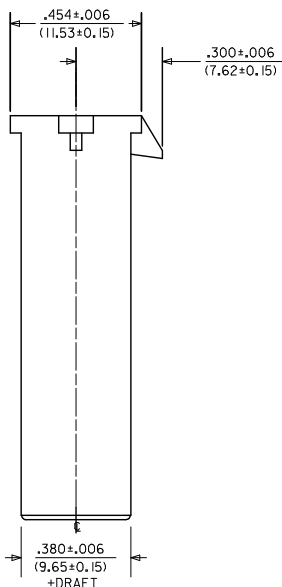
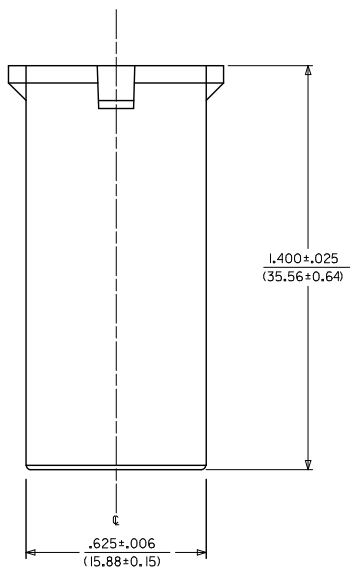
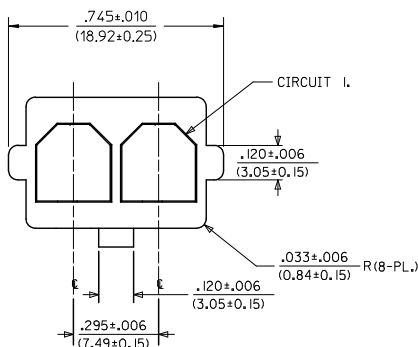
For any questions, you can email us directly:

sales@integrated-circuit.com

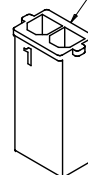
ITEM NUMBER	MATERIAL	COLOR
172673-2002	UL94V-0 NYLON	BLACK
172673-3002	UL94V-2 NYLON, IEC 60335-1, GLOW WIRE CAPABLE	BLACK

NOTES:

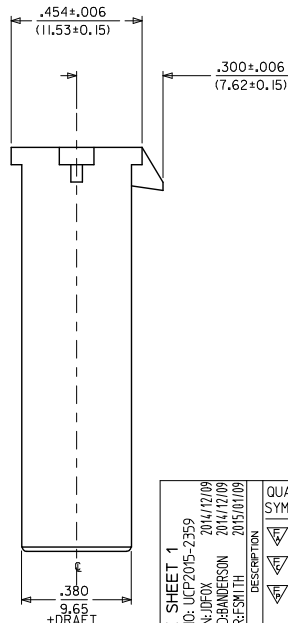
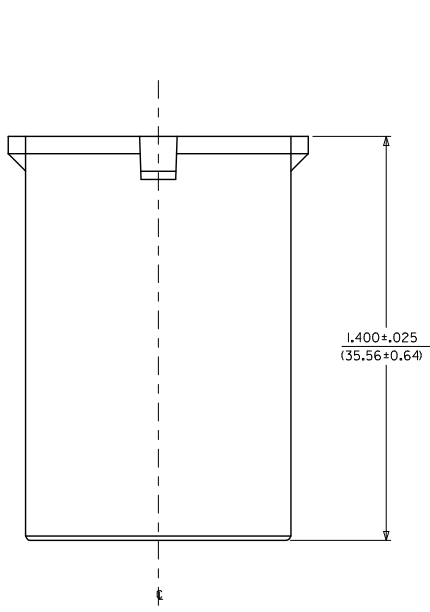
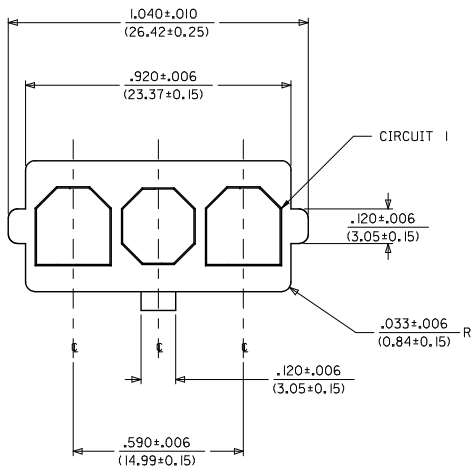
1. MATERIAL: SEE CHART.
2. FINISH: NONE.
3. PRODUCT SPECIFICATION: PS-171825-001.
4. PACKAGING: PK-43680-001.
5. THIS CONNECTOR HOUSING FOR USE WITH 171826 TERMINALS.
6. THIS CONNECTOR HOUSING WILL MATE TO 172672 OR 44441 HOUSINGS.
7. PARTS CONFORM TO CLASS B REQUIREMENTS OF COSMETIC SPEC PS-45499-002.
- SOME PARTS MAY HAVE A BLEMISH NEAR THE GATE THAT DOES NOT AFFECT FUNCTIONALITY.
8. MOLDED IN SERIES NO. MAY BE 172673 OR 43680.



LOCKING NUB IS LOCATED HERE



GATE BLEMISH NOTE 8 EC NO: UCP2015-2359 DRAWN BY JDF CHKD BY BANDERSON APPROVED BY JDF DATE 2014/12/09 DATE 2014/12/09 DATE 2015/01/09	QUALITY SYMBOLS <div>▽=0</div> <div>▽=0</div> <div>▽=0</div>	GENERAL TOLERANCES (UNLESS SPECIFIED)		DIMENSION STYLE IN/MM		SCALE 4:1	DESIGN UNITS INCH	THIRD ANGLE PROJECTION	
		mm		INCH		DRAWN BY DATE		TITLE	
		4 PLACES ± ±		JDFOX 2014/07/24		SUPER-SABRE PLUG HOUSING			
		3 PLACES ± ±		CHECKED BY DATE					
		2 PLACES ± ±		BANDERSON 2014/07/24					
		1 PLACE ± ±		APPROVED BY DATE		molex			
		0 PLACE ± ±		FSM1 TH 2014/07/31					
ANGULAR ±1/2°		MATERIAL NO.		DOCUMENT NO.		SHEET NO.			
DRAFT WHERE APPLICABLE MUST REMAIN WITHIN DIMENSIONS		SEE CHART		SD-172673-001		1 OF 5			
A2	REV	THIS DRAWING CONTAINS INFORMATION THAT IS PROPRIETARY TO MOLEX INCORPORATED AND SHOULD NOT BE USED WITHOUT WRITTEN PERMISSION							

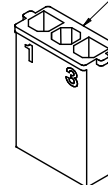


ITEM NUMBER	MATERIAL	COLOR
172673-2003	UL94V-0 NYLON	BLACK
172673-3003	UL94V-2 NYLON, IEC 60335-1, GLOW WIRE CAPABLE	BLACK

NOTES:

1. MATERIAL: SEE CHART.
2. FINISH: NONE.
3. PRODUCT SPECIFICATION: PS-171825-001.
4. PACKAGING: PK-43680-001.
5. THIS CONNECTOR HOUSING FOR USE WITH 171826 TERMINALS.
6. THIS CONNECTOR HOUSING WILL MATE TO 172672 OR 44441 HOUSINGS.
7. PARTS CONFORM TO CLASS B REQUIREMENTS OF COSMETIC SPEC PS-45499-002.
- SOME PARTS MAY HAVE A BLEMISH NEAR THE GATE THAT DOES NOT AFFECT FUNCTIONALITY.
8. MOLDED IN SERIES NO. MAY BE 172673 OR 43680.

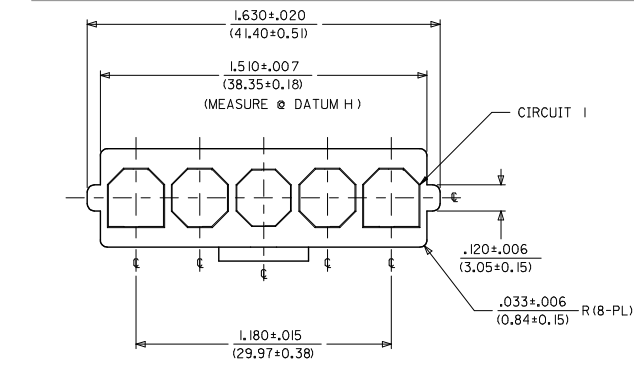
LOCKING NUB IS LOCATED HERE



172673-2003
(NO SCALE)

SEE SHEET 1 EC NO: UCP2015-2359 DRAWN: JDFX 2014/12/09 CHKD: BANDERSON 2014/12/09 APPROVED: SMITH 2015/01/09	QUALITY SYMBOLS	GENERAL TOLERANCES (UNLESS SPECIFIED)		DIMENSION STYLE IN/MM		SCALE 4:1	DESIGN UNITS INCH	THIRD ANGLE PROJECTION	
	▽=0	mm	INCH	DRAWN BY	DATE	TITLE		SUPER-SABRE PLUG HOUSING molex	
	▽=0	4 PLACES ±---	±---	JDFX	2014/07/24				
	▽=0	3 PLACES ±---	±.010	CHECKED BY	DATE				
		2 PLACES ±0.25	±.014	BANDERSON	2014/07/24				
		1 PLACE ±0.35	±---	APPROVED BY	DATE				
		0 PLACE ±---	±---	FSMITH	2014/07/31				
		ANGULAR ±1/2°		MATERIAL NO.		DOCUMENT NO.			
		DRAFT WHERE APPLICABLE		SEE CHART		SD-172673-001		SHEET NO. 2 OF 5	
		MUST REMAIN WITHIN DIMENSIONS		THIS DRAWING CONTAINS INFORMATION THAT IS PROPRIETARY TO MOLEX INCORPORATED AND SHOULD NOT BE USED WITHOUT WRITTEN PERMISSION					

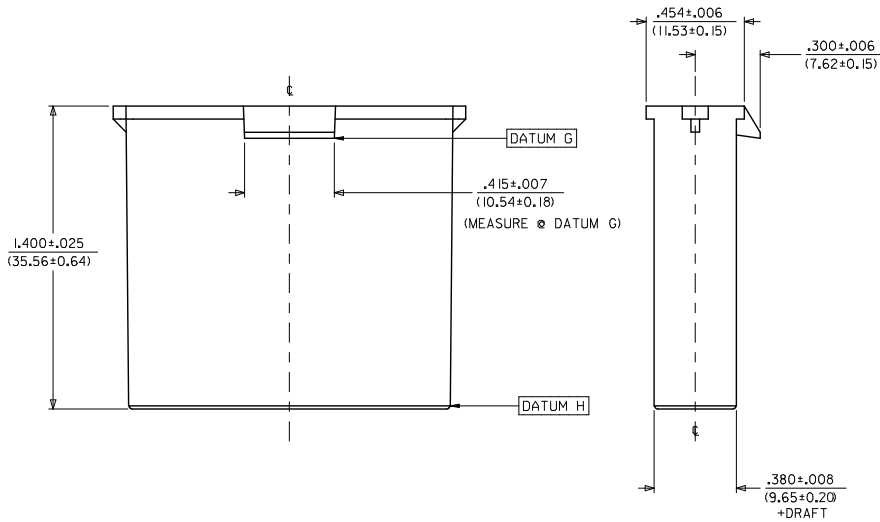
tb_frame_C_P_AM_T
Rev. G 2012/01/11



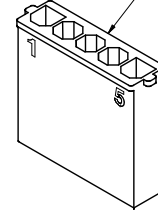
ITEM NUMBER	MATERIAL	COLOR
172673-2005	NYLON, UL94V-0	BLACK
172673-3005	NYLON, UL94V-2, IEC 60335-1 GLOW-WIRE CAPABLE	BLACK

NOTE:

1. MATERIAL: SEE CHART.
2. FINISH: NONE.
3. PRODUCT SPECIFICATION: PS-171825-001.
4. PACKAGING: PK-43680-001.
5. THIS CONNECTOR HOUSING FOR USE WITH 171826 TERMINALS.
6. THIS CONNECTOR HOUSING WILL MATE TO 172672 OR 44441 HOUSINGS.
7. PARTS CONFORM TO CLASS B REQUIREMENTS OF COSMETIC SPEC PS-45499-002.
 - SOME PARTS MAY HAVE A BLEMISH NEAR THE GATE THAT DOES NOT AFFECT FUNCTIONALITY.
8. MOLDED IN SERIES NO. MAY BE 172673 OR 43680.



LOCKING NUB IS LOCATED HERE

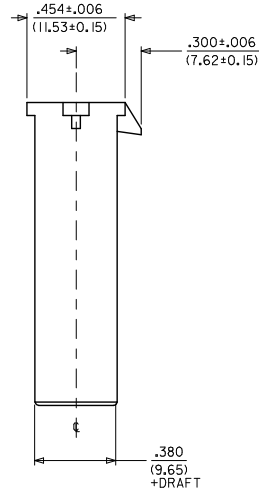
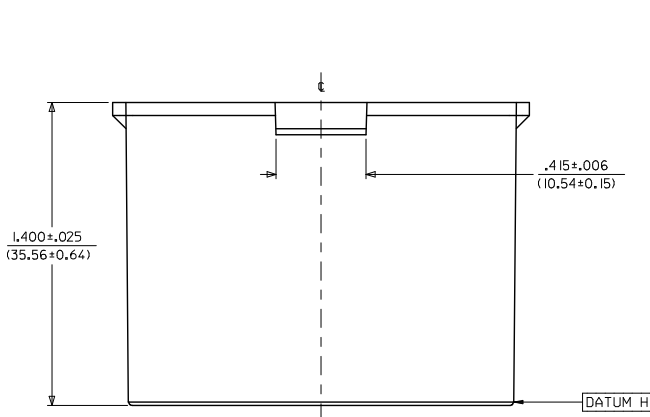
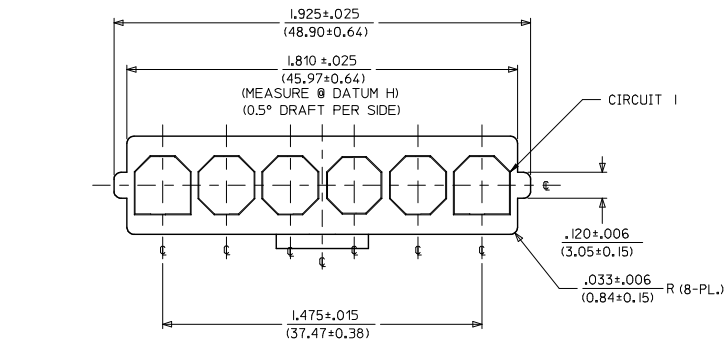


SEE SHEET 1 EC NO: JDF02015-2359 DRAWN: JDFX CHKD: BANDERSON APPR: FSMITH	QUALITY SYMBOLS	GENERAL TOLERANCES (UNLESS SPECIFIED)		DIMENSION STYLE IN/MM		SCALE 3:1	DESIGN UNITS INCH	THIRD ANGLE PROJECTION
	▽=0 ▽=0 ▽=0	mm	INCH	DRAWN BY	DATE	TITLE	SUPER-SABRE PLUG HOUSING	
		4 PLACES ±---	±---	JDFCX	2014/07/24			
		3 PLACES ±---	±.010	CHECKED BY	DATE			
		2 PLACES ±0.25	±.014	BANDERSON	2014/07/24			
		1 PLACE ±0.35	±---	APPROVED BY	DATE			
	0 PLACE ±---	±---	FSMITH	2014/07/31		molex		
	ANGULAR ±1/2°		MATERIAL NO.	DOCUMENT NO.				
	DRAFT WHERE APPLICABLE MUST REMAIN WITHIN DIMENSIONS		SEE CHART		SD-172673-001		SHEET NO. 4 OF 5	
	SIZE C THIS DRAWING CONTAINS INFORMATION THAT IS PROPRIETARY TO MOLEX INCORPORATED AND SHOULD NOT BE USED WITHOUT WRITTEN PERMISSION							

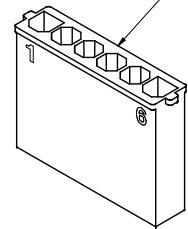
ITEM NUMBER	MATERIAL	COLOR
172673-2006	UL94V-0 NYLON	BLACK
172673-3006	UL94V-2 NYLON, IEC 60335-1 GLOW WIRE CAPABLE	BLACK

NOTE:

1. MATERIAL: SEE CHART.
2. FINISH: NONE.
3. PRODUCT SPECIFICATION: PS-171825-001.
4. PACKAGING: PK-43680-001.
5. THIS CONNECTOR HOUSING FOR USE WITH 171826 TERMINALS.
6. THIS CONNECTOR HOUSING WILL MATE TO 172672 OR 44441 HOUSINGS.
7. PARTS CONFORM TO CLASS B REQUIREMENTS OF COSMETIC SPEC. PS-45499-002.
- SOME PARTS MAY HAVE A BLEMISH NEAR THE GATE THAT DOES NOT AFFECT FUNCTIONALITY.
8. MOLDED IN SERIES NO. MAY BE 172673 OR 43680.



LOCKING NUB IS LOCATED HERE



REV	DESCRIPTION	QUALITY SYMBOLS	GENERAL TOLERANCES (UNLESS SPECIFIED)		DIMENSION STYLE		SCALE	DESIGN UNITS	THIRD ANGLE PROJECTION	TITLE	MATERIAL NO.	DOCUMENT NO.	SHEET NO.
			mm	INCH	IN/MM	IN							
1	SEE SHEET 1	0	4 PLACES ±	---	---	---	---	---	---	---	---	---	---
2	EC NO: UCP2015-2359	0	3 PLACES ±	---	---	---	---	---	---	---	---	---	---
3	DRWN: JDFX 2014/12/09	0	2 PLACES ±	0.25	±.014	---	---	---	---	---	---	---	---
4	CHK: BANDERSON 2014/07/24	0	1 PLACE ±	0.35	±	---	---	---	---	---	---	---	---
5	APPR: SMITH 2015/01/09	0	0 PLACE ±	---	---	---	---	---	---	---	---	---	---
6	APPROVED BY DATE	0	ANGULAR ±1/2°	---	---	---	---	---	---	---	---	---	---
7	REV	0	DRAFT WHERE APPLICABLE MUST REMAIN WITHIN DIMENSIONS	---	---	---	---	---	---	---	---	---	---
8	REV	0	SEE CHART	---	---	---	---	---	---	---	---	---	---
9	REV	0	THIS DRAWING CONTAINS INFORMATION THAT IS PROPRIETARY TO MOLEX INCORPORATED AND SHOULD NOT BE USED WITHOUT WRITTEN PERMISSION	---	---	---	---	---	---	---	---	---	---