

## Excellent Integrated System Limited

Stocking Distributor

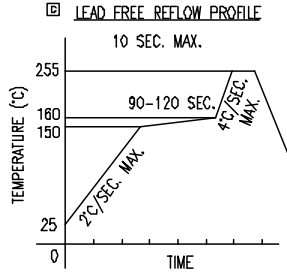
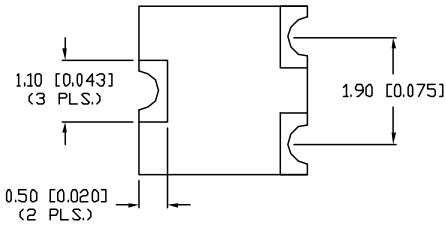
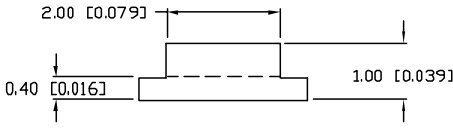
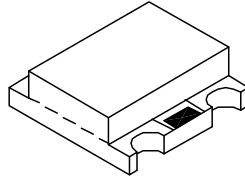
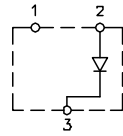
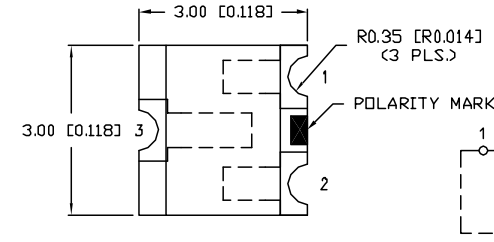
Click to view price, real time Inventory, Delivery & Lifecycle Information:

[Lumex, Inc.](#)  
[SML-LX15HC-TR](#)

For any questions, you can email us directly:

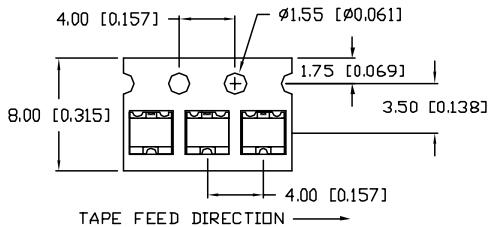
[sales@integrated-circuit.com](mailto:sales@integrated-circuit.com)

UNCONTROLLED DOCUMENT

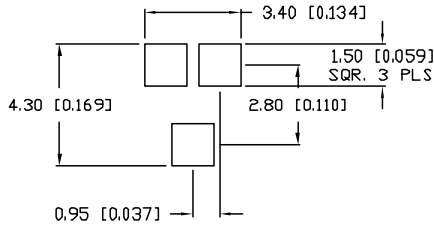


TOTAL TIME ABOVE 220°C IS 60 SECONDS MAX.

TAPE SPEC DETAIL



RECOMMENDED PAD LAYOUT



NOTES:

- 1. THE POLARITY MARK IS ORIENTED TOWARDS THE TAPE SPROCKET HOLE.

CAUTION: MOISTURE SENSITIVE DEVICE  
PER JEDEC LEVEL 4 STANDARDS

UNCONTROLLED DOCUMENT

\*UNLESS OTHERWISE SPECIFIED TOLERANCES PER DECIMAL PRECISION ARE: X=±1 (+0.039), XX=±0.5 (+0.020), XXX=±0.25 (+0.010), XXXX=±0.127 (+0.005). LEAD SIZE=±0.05 (0.002), LEAD LENGTH=±0.75 (+0.030), MIN= -0.00, MAX= +0.00

|               |                                     |          |
|---------------|-------------------------------------|----------|
| PART NUMBER   |                                     | REV.     |
| SML-LX15HC-TR |                                     | D        |
| REV.          | E.C.N. NUMBER AND REVISION COMMENTS | DATE     |
| A             | E.C.N. #10967.                      | 3.14.03  |
| B             | E.C.N. #11010.                      | 7.3.03   |
| C             | E.C.N. #11148.                      | 11.30.05 |
| D             | E.C.N. #11361.                      | 11.28.06 |

ELECTRO-OPTICAL CHARACTERISTICS  $T_A=25^\circ\text{C}$   $I_f=20\text{mA}$

| PARAMETER          | MIN         | TYP | MAX | UNITS          | TEST COND             |
|--------------------|-------------|-----|-----|----------------|-----------------------|
| PEAK WAVELENGTH    |             | 700 |     | nm             |                       |
| FORWARD VOLTAGE    |             | 2.0 | 2.5 | V <sub>f</sub> |                       |
| REVERSE VOLTAGE    | 5.0         |     |     | V <sub>r</sub> | I <sub>f</sub> =100μA |
| AXIAL INTENSITY    |             | 5   |     | mcd            | I <sub>f</sub> =20mA  |
| VIEWING ANGLE      |             | 140 |     | 2x theta       |                       |
| EMITTED COLOR:     | RED         |     |     |                |                       |
| EPOXY LENS FINISH: | WATER CLEAR |     |     |                |                       |

LIMITS OF SAFE OPERATION AT 25°C

| PARAMETER                | MAX        | UNITS |
|--------------------------|------------|-------|
| PEAK FORWARD CURRENT*    | 160        | mA    |
| STEADY CURRENT           | 25         | mA    |
| POWER DISSIPATION        | 100        | mW    |
| DERATE FROM 25°C         | -1.2       | mW/°C |
| OPERATING, STORAGE TEMP. | -40 TO +85 | °C    |

\* t < 10μs

|   |               |
|---|---------------|
| REV.  | PART NUMBER   |
| D   | SML-LX15HC-TR |
| SOT-23 REPLACEMENT, SURFACE MOUNT LED,<br>700nm RED LED,<br>WATER CLEAR LENS, TAPE AND REEL |               |

**CONFIDENTIAL INFORMATION**  
 THE INFORMATION CONTAINED IN THIS DOCUMENT IS THE PROPERTY OF LUMEX INC. EXCEPT AS SPECIFICALLY AUTHORIZED IN WRITING BY LUMEX INC., THE HOLDER OF THIS DOCUMENT SHALL KEEP ALL INFORMATION CONTAINED HEREIN CONFIDENTIAL AND SHALL PROTECT SAME IN WHOLE OR IN PART FROM DISCLOSURE AND DISSEMINATION TO ALL THIRD PARTIES.

**RELIABILITY NOTE**  
 OUR MANY YEARS OF EXPERIENCE DATA ACCUMULATION INDICATE THAT SOLDER HEAT IS A MAJOR CAUSE OF EARLY AND FUTURE FAILURE. PLEASE PAY ATTENTION TO YOUR SOLDERING PROCESS.



290 E. HELEN ROAD  
 PALATINE, IL 60067-6976  
 PHONE: +1.847.359.2790  
 US WEB: www.lumex.com  
 TW WEB: www.lumex.com.tw

|           |             |              |                |
|-----------|-------------|--------------|----------------|
| DRAWN BY: | CHECKED BY: | APPROVED BY: | DATE: 11.28.06 |
| jc        |             |              | PAGE: 1 OF 1   |
|           |             |              | SCALE: N/A     |