

Excellent Integrated System Limited

Stocking Distributor

Click to view price, real time Inventory, Delivery & Lifecycle Information:

[Pulse Electronics Corporation](#)

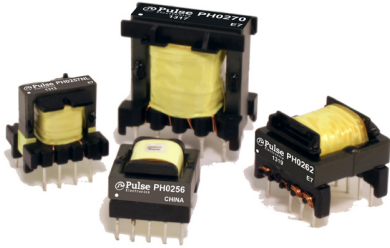
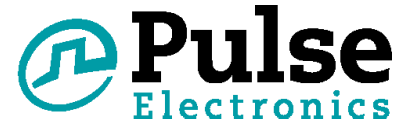
[PH0256NL](#)

For any questions, you can email us directly:

sales@integrated-circuit.com

Switch Mode Transformer for AC/DC offline Applications

EE16H, EE16V, EF20H and EF25V Platforms

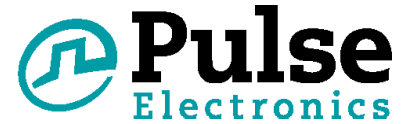


- AC/DC offline Switch Mode Transformer
- Hipot up to 3000Vrms
- Flyback Topology
- Operational Insulation
- Matched to Tiny Switch and Top Switch chipsets
- Custom Design Available: <60W with up to Reinforced Insulation

Electrical Specifications @ 25°C - Operating Temperature -40°C to +125°C							
PH0256NL	Pri. Inductance	(3-2)	2800 $\mu\text{H} \pm 15\%$		<p>FLYBACK TRANSFORMER</p>		
	Lk. Inductance w/	(4,5,8,10)	65 μH max shorted				
	DCR	(3-2)	3.3	Ω Max			
			(10-8)				0.02
			(4-5)				0.13
	Hi-Pot	Pri-Sec	500	Vrms			
	K1 Factor	10100					
PI IC's	TNY264/274						
PH0259NL	Pri. Inductance	(4-1)	1800 $\mu\text{H} \pm 15\%$		<p>FLYBACK TRANSFORMER</p>		
	Lk. Inductance w/	(5,6,7,8)	60 μH max shorted				
	DCR	(4-1)	2.556	Ω Max			
			(5-6)				0.0168
			(8-6)				0.174
	Hi-Pot	Pri-Sec	500	Vrms			
	K1 Factor	7200					
PI IC's	TNY266/274						
PH0262NL	Pri. Inductance	(3-1)	790 $\mu\text{H} \pm 10\%$		<p>FLYBACK TRANSFORMER</p>		
	Lk. Inductance w/	(3-1) (4,5,9,10)	30 μH max shorted				
	DCR	(3-1)	1.085	Ω Max			
			(4-5)				0.015
			(10-9)				0.026
	Hi-Pot	Pri-Sec	3000	Vrms			
	K1 Factor	4030					
PI IC's	TNY279						

Switch Mode Transformer for AC/DC offline Applications

EE16H, EE16V, EF20H and EF25V Platforms



PH0270NL	Pri. Inductance	(3-1)	876 μ H \pm 10%	<p>FLYBACK TRANSFORMER</p>	
	Lk. Inductance w/	(3-1) (4,5,6,7,9,10)	28 μ H max shorted		
	DCR	(3-1) (5-4) (6-7) (9-10)	Ω Max		0.5
					0.026
					0.025
					0.025
	Hi-Pot	Pri-Sec	1500		Vrms
	K1 Factor		2900		
PI IC's	TOP244 / 245 / 246 / 254 / 264				

Notes:

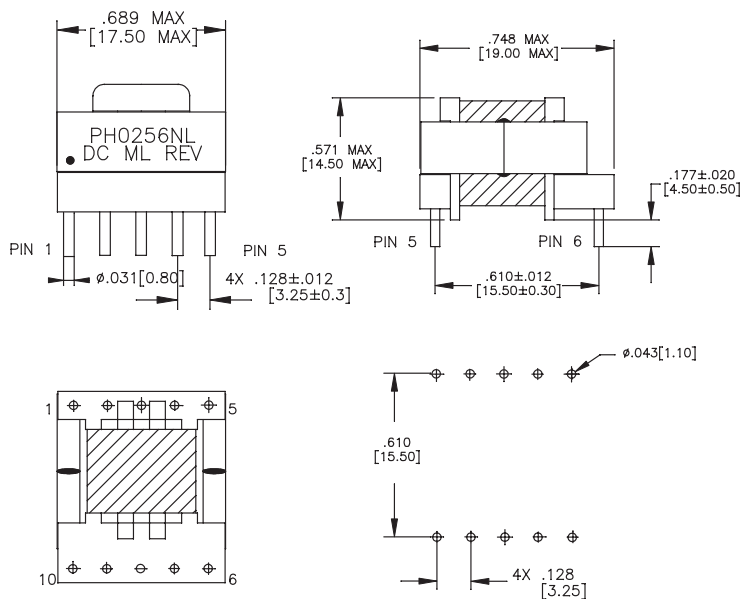
- The temperature of the component (ambient plus temperature rise) must be within the stated operating temperature range.
- The above transformers and inductors have been tested and approved by Pulse's power IC partners and are sited in the appropriate datasheet or evaluation board documentation at these companies. To determine which IC and IC partners are matched with the above Pulse part numbers please consult the IC Cross Reference on the Pulse website.
- For flyback topology applications, it is necessary to ensure that the transformer will not saturate in the application. The peak flux density (Bpk) should remain below 2700 Gauss. To calculate the peak density, use the following formula:

$$B_{pk} \text{ (Gauss)} = K1_Factor * I_{pk} \text{ (A)}$$
- In high volt-sec applications, it is important to calculate the core loss of the transformer. Approximate transformer core loss can be calculated as:

$$CoreLoss \text{ (W)} = 3.6E-14 * (Freq_kHz)^{1.65} * (\Delta B_Gauss)^{2.65}$$
 where ΔB can be calculated as:
 For Flyback Topology: $\Delta B = K1_Factor * \Delta(A)$
 For Forward Topology: $\Delta B = K1_Factor * Volt\text{-}\mu sec$
- The "NL" suffix indicates an RoHS-compliant part number. Non-NL suffixed parts are not necessarily RoHS compliant, but are electrically and mechanically equivalent to NL versions. If a part number does not have the "NL" suffix, but an RoHS compliant version is required, please contact Pulse for availability.

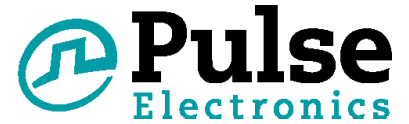
Mechanical

PH0256NL



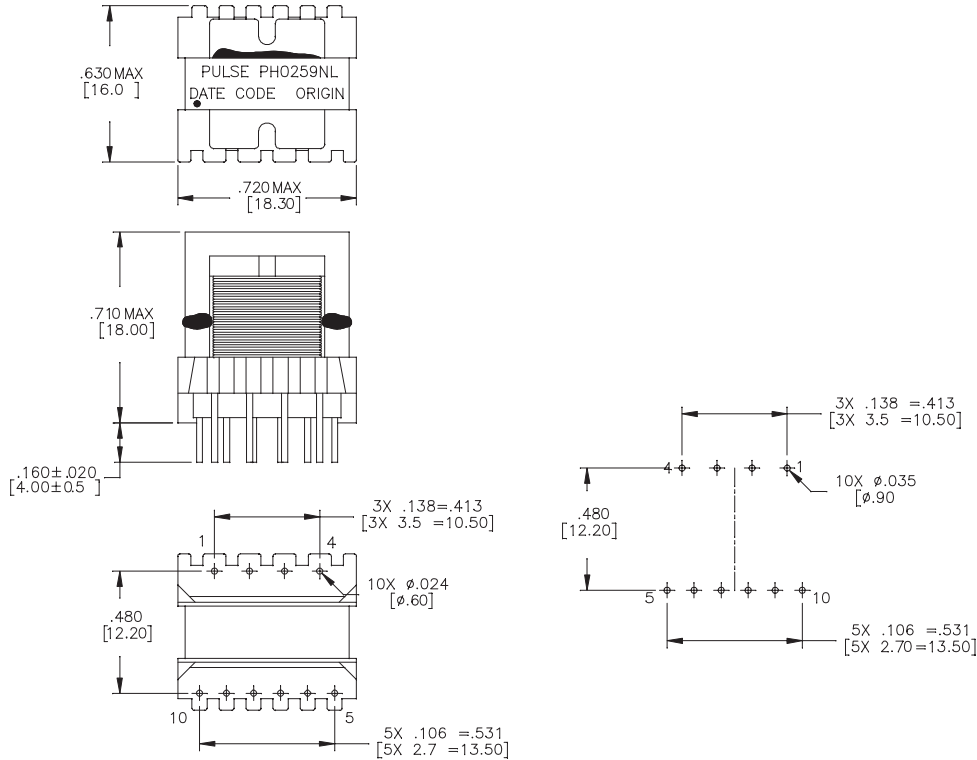
Switch Mode Transformer for AC/DC offline Applications

EE16H, EE16V, EF20H and EF25V Platforms

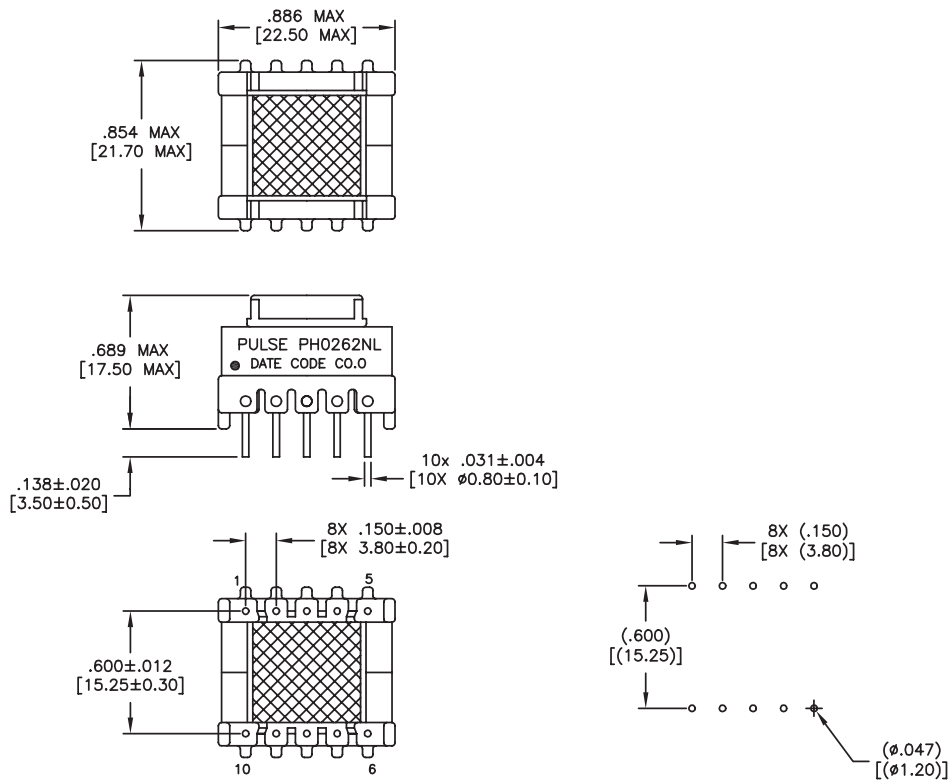


Mechanical

PH0259NL



PH0262NL

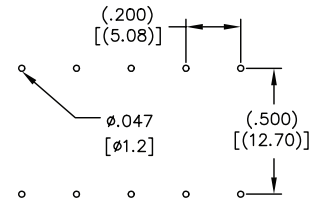
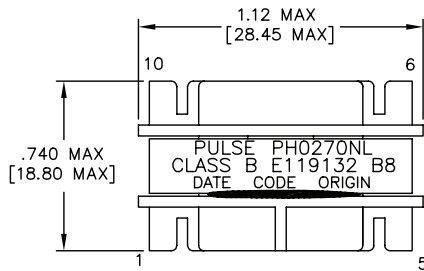


Switch Mode Transformer for AC/DC offline Applications

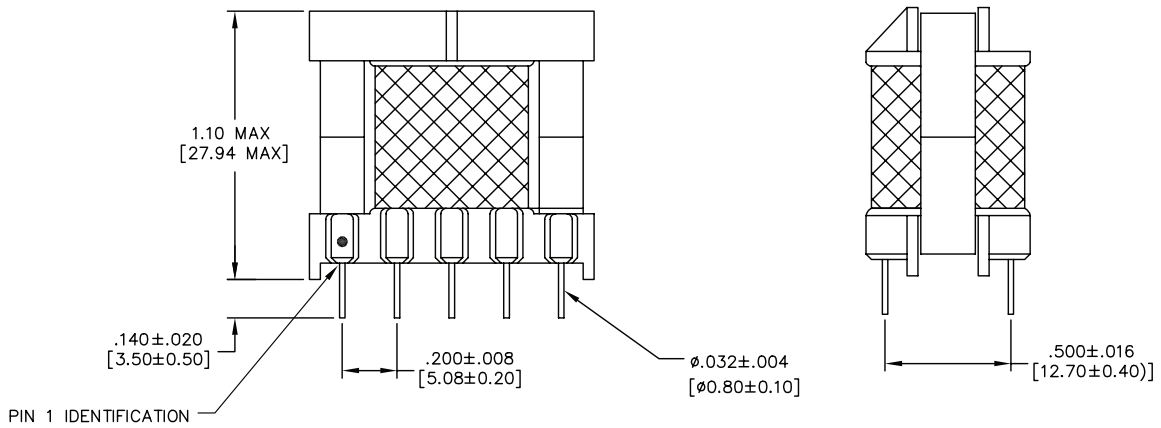
EE16H, EE16V, EF20H and EF25V Platforms

Mechanical

PH0270NL



SUGGESTED LAND PATTERN



For More Information

Pulse Worldwide Headquarters

12220 World Trade Drive
 San Diego, CA 92128
 U.S.A.

Tel: 858 674 8100
 Fax: 858 674 8262

Pulse Europe

Einsteinstrasse 1
 D-71083 Herrenberg
 Germany

Tel: 49 7032 78060
 Fax: 49 7032 7806 135

Pulse China Headquarters

B402, Shenzhen Academy of Aerospace Technology Bldg.
 10th Kejinan Road High-Tech Zone Nanshan District Shenzhen, PR China
 518057
 Tel: 86 755 33966678
 Fax: 86 755 33966700

Pulse North China

Room 2704/2705 Super Ocean Finance Ctr.
 2067 Yan An Road West Shanghai 200336 China

Tel: 86 21 62787060
 Fax: 86 2162786973

Pulse South Asia

135 Joo Seng Road #03-02 PM Industrial Bldg. Singapore 368363

Tel: 65 6287 8998
 Fax: 65 6287 8998

Pulse North Asia

3F, No. 198 Zhongyuan Road Zhongli City Taoyuan County 320 Taiwan R. O. C.
 Tel: 886 3 4356768
 Fax: 886 3 4356823 (Pulse)
 Fax: 886 3 4356820 (FRE)

Performance warranty of products offered on this data sheet is limited to the parameters specified. Data is subject to change without notice. Other brand and product names mentioned herein may be trademarks or registered trademarks of their respective owners. © Copyright, 2013. Pulse Electronics, Inc. All rights reserved.