

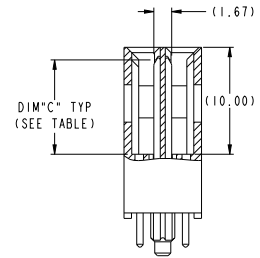
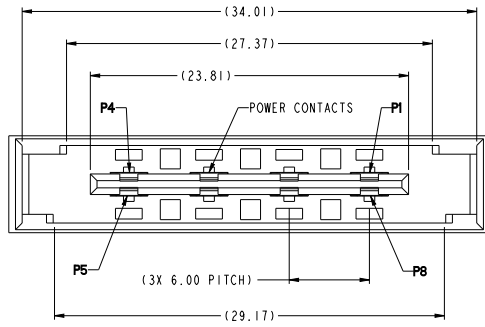
Excellent Integrated System Limited

Stocking Distributor

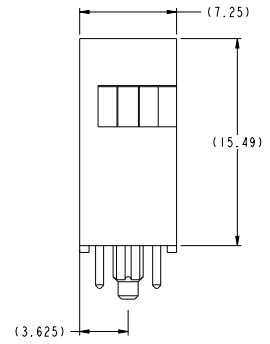
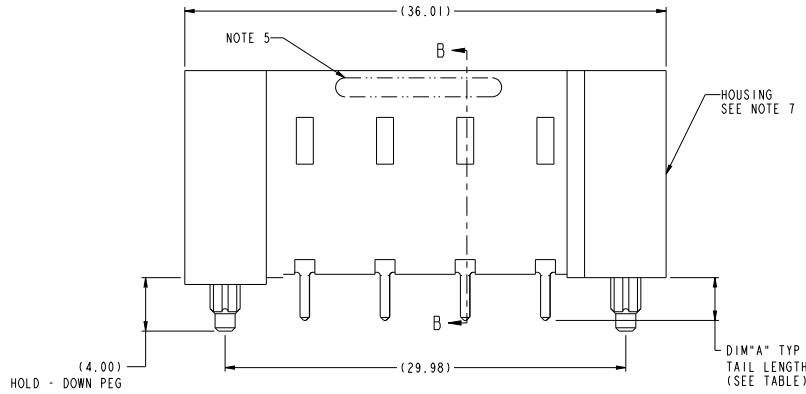
Click to view price, real time Inventory, Delivery & Lifecycle Information:

[FCI](#)
[10125689-21001LF](#)

For any questions, you can email us directly:
sales@integrated-circuit.com



SECTION B-B
SCALE 4:1



spec. ref.	-	dr.	Lin. Jinhua	designed	projection	mm	size	A2	scale	5:1
tolerance std.	ASME Y14.5	eng.	Lin. Jinhua	checked	product family	rel. level	acc. no.			
	TOLERANCES UNLESS OTHERWISE SPECIFIED	chr.	Lin. Jinhua	approved						Released
surface	linear	0.1	±0.3	www.fcicom	VERTICAL HEADER (8LP)					
		0.2X	±0.10		HPCE C1B VERTICAL-HEADER				10125689	
		0.25X	±0.050							B
ASME Y14.5	angular	0°	±2°							

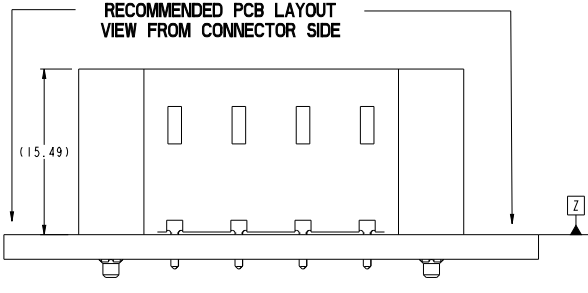
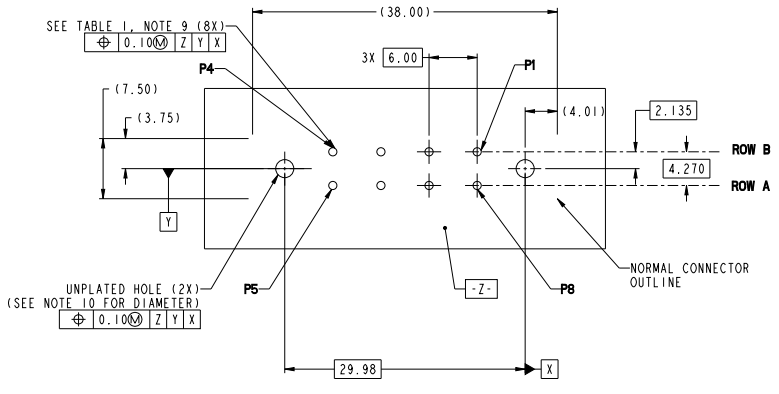
PDS: Rev: B

STATUS: Released

Printed: Apr 25, 2014

TABLE 1 (HPCE / SOLDER TAILS)
PLATED THROUGH-HOLE REQUIREMENTS

CONTACT TYPE	TOP LAYER DESCRIPTION	DRILLED HOLE DIAMETER	COPPER THICKNESS	TIN-LEAD THICKNESS	TIN THICKNESS	FINISHED HOLE DIAMETER
		TIN-LEAD	1.10-1.16 (1.15 DRILL)	0.025 - 0.050	0.005 - 0.015	--
POWER & SIGNAL	IMMERSION TIN	1.10-1.16 (1.15 DRILL)	0.025 - 0.050	--	0.9 - 1.5um	0.94 - 1.10
	COPPER (SEE NOTE 8)	1.10-1.16 (1.15 DRILL)	0.025 - 0.050	--	--	0.94 - 1.10



SCALE 4:1

spec ref	-	dr	Lee Jiamin	approval	projection	mm	size	A2	scale	5:1
tolerance std	ASME Y14.5	chk	Lee Jiamin	checked	①	←	acc no		rel level	Released
surface	linear	0.1	±0.3	FCI	VERTICAL HEADER (8LP)		10125689		rev	B
	angular	0.2X	±0.10	www.fci.com	HPCE C1B VERTICAL-HEADER					
		0.2X	±0.050							

PDS: Rev :B

STATUS: Released

Printed: Apr 25, 2014

Copyright FCI

PRODUCT PART NUMBER

10125689-□□□□LF

BASE PART NUMBER

CONTACT AREA PLATING
 UNDERPLATED 50u*(1.27um) MIN. NICKEL
 1: 100u*(2.5um) MIN. Ag
 2: 30u*(0.760um) MIN. GXT

FIRST MATE LAST BREAK PIN POSITION
 000: ALL PINS ARE LONG PINS SEE TABLE
 001: SOME PINS ARE SHORT PINS SEE TABLE

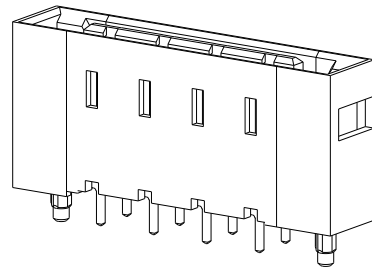
DIM "A", TAIL LENGTH
 1: 3.00±0.25mm (PCB THK 1.57mm Min PF)
 2: 3.25±0.25mm (PCB THK 2.36mm +/-0.13mm)
 3: 2.60±0.25mm (PCB THK 1.57mm +/-0.13mm)

ROW#	P#	DIM "C"±0.25	DIM "A"±0.25
ROW A	P1	8.86	3.25
	P2	7.59	3.25
	P3	8.86	2.60
	P4	7.59	2.60
	P9	8.86	3.00
ROW B	P10	7.59	3.00
	P1	8.86	3.25
	P2	8.86	3.25
	P3	7.59	2.60
	P4	7.59	2.60
P9	8.86	3.00	
P10	7.59	3.00	

NUMBER	END MODULE	POWER CONTACT				END MODULE
		4	3	2	1	
000		P9	P9	P9	P9	ROW A
		P9	P9	P9	P9	ROW B
001		P10	P9	P9	P10	ROW A
		P10	P9	P9	P10	ROW B

NOTES:

- CONNECTOR MATERIALS:
 HOUSING: HIGH TEMPERATURE THERMAL PLASTIC, BLACK UL 94V-0 COMPLIANT
 CONTACTS: HIGH PERFORMANCE COPPER ALLOY.
- CONTACT FINISH REF. GS-12-1031 SECTION 5.2
- PRODUCT SPECIFICATION: GS-12-1031
- APPLICATION SPECIFICATION: GS-20-0369
- PRODUCT MARKING (FCI PART NUMBER & DATE CODE) ON HOUSING IN AREA SHOWN.
- PACKAGING MEETS FCI SPECIFICATION GS-14-2272. ⚠
- HOUSING COMPONENT WILL WITHSTAND EXPOSURE TO 260°C PEAK TEMPERATURE FOR 60 SECONDS IN A CONVECTION, INFRA-RED, OR VAPOR PHASE REFLOW OVEN.
- COPPER PLATING THICKNESS IN CENTER OF VIA-HOLE CAN BE NO MORE THAN 0.003 LESS THAN OTHER AREAS.
- ALL HOLE SIZES ARE FINISHED HOLE SIZES.
- MOUNTING HOLES ARE UNPLATED
 Ø 2.25±0.05 FOR SOLDER TAILS



SCALE 4:1

spec ref	-	dr	Lin Jiamin	designed	projection	mm	size	A2	scale	5:1
tolerance std	ASME Y14.5	eng	Lin Jiamin	checked	①	←	acc no		rel level	Released
	TOLERANCES UNLESS OTHERWISE SPECIFIED	chr	Lin Jiamin	approved	product family					
		appr	Lin Jiamin	approved						
surface	linear	0.1	±0.3		VERTICAL HEADER (8LP)		10125689	B	rev	B
		0.2X	±0.10		HPCE C1B VERTICAL-HEADER					
		0.2X	±0.050							
ASME Y14.5	angular	0°	±2°	www.fci.com	cat. no.		Product - Customer Draw	sheet 3 of 3		

PDS: Rev: B

STATUS: Released

Printed: Apr 25, 2014

Copyright FCI.