

Excellent Integrated System Limited

Stocking Distributor

Click to view price, real time Inventory, Delivery & Lifecycle Information:

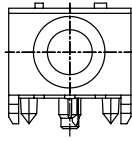
[FCI](#)

[10012562-002LF](#)

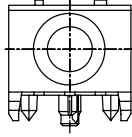
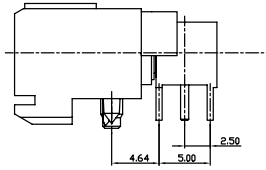
For any questions, you can email us directly:

sales@integrated-circuit.com

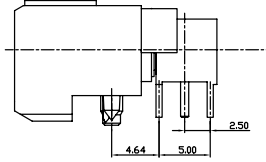
PRODUCT NUMBER	STYLE
10012562-001	STYLE A
10012562-001LF	STYLE A
10012562-002	STYLE B
10012562-002LF	STRONG HOUSING



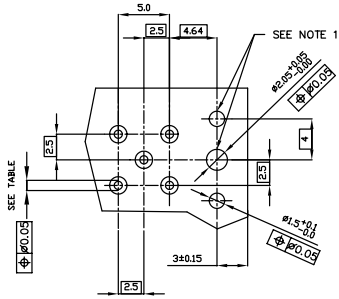
STYLE A



STYLE B



- NOTES:
- INDICATED HOLES ARE TO BE UNPLATED
 - FOR DIMENSIONAL AND PRODUCT INFORMATION CONCERNING P/N 71634-103 REFER TO DRAWING 71634.
 - FOR DIMENSIONAL AND PRODUCT INFORMATION CONCERNING P/N 72718-001A OR 72718-002A REFER TO DRAWING 72718.
 - ADD LF SUFFIX AT THE END OF THE PART NUMBER FOR LEAD FREE OPTION
 - THIS PRODUCT MEETS EUROPEAN UNION DIRECTIVES AND OTHER COUNTRY REGULATION AS DESCRIBED IN GS-22-008



RECOMMENDED HOLE PATTERN, COMPONENT SIDE.

PRESS FIT HOLES	HOLE DIAMETER AFTER PLATING	0.65 - 0.80
	DRILLED HOLE	0.61 - 0.66 (0.65 DRILL)
	COPPER PLATING	0.025 MIN
	TIN PLATING	0.005 - 0.015

www.fciconnect.com		surface	ISO 1302	tolerance	ISO 406 ISO 1101	projection	MM
		TOLERANCES UNLESS OTHERWISE SPECIFIED				size	A4
		ANGULAR	LINEAR	0.X	± 0.30	ECN	N10-0381
				0.XX	± 0.15	Spec ref	
				0.XXX	± 0.05		
		Product family	METRAL				
		title	METRAL R/A COAX RECEPTACLE KIT		part no	10012562	Rev. F
		catalog no			CUSTOMER		sheet 1 of 1

rev	ecn no	dr	date
A	V21222	CGD	07/29/02
B	V21619	TAB	10/10/02
C	M06-0239	AGS	06/15/06
D	M09-0129	MHT	08/26/09
E	N10-0055	R.B	02/24/10
F	N10-0381	AZH	11/09/10

REV F - 086-06-07

1

2

3 PDM: Rev:F

STATUS: Released

4 Printed: Nov 12, 2010



Copyright FCI.