

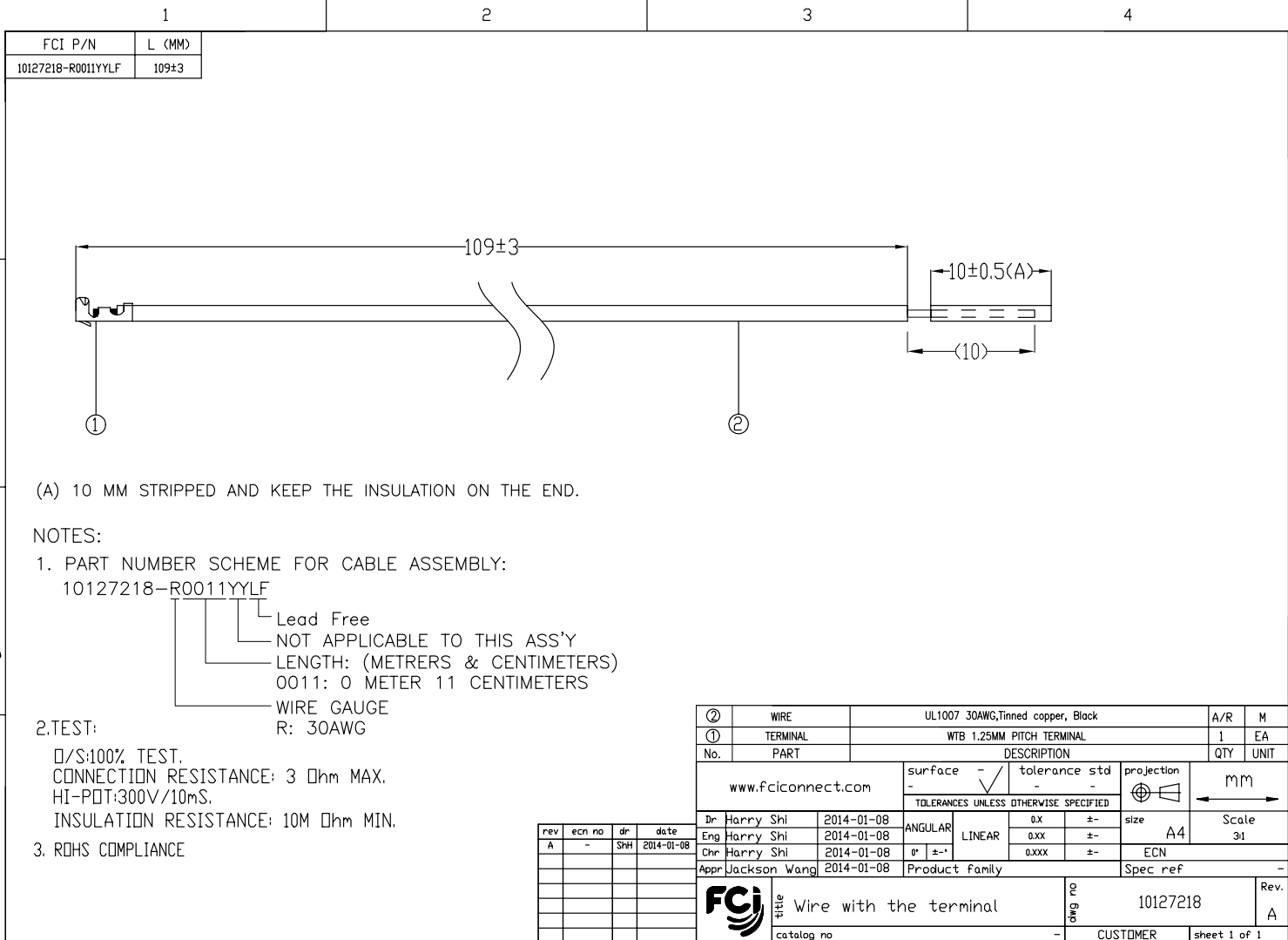
Excellent Integrated System Limited

Stocking Distributor

Click to view price, real time Inventory, Delivery & Lifecycle Information:

[FCI](#)
[10127218-R0011YYLF](#)

For any questions, you can email us directly:
sales@integrated-circuit.com



(A) 10 MM STRIPPED AND KEEP THE INSULATION ON THE END.

NOTES:

1. PART NUMBER SCHEME FOR CABLE ASSEMBLY:

10127218-R0011YYLF

- Lead Free
- NOT APPLICABLE TO THIS ASS'Y
- LENGTH: (METERS & CENTIMETERS)
- 0011: 0 METER 11 CENTIMETERS
- WIRE GAUGE
- R: 30AWG

2. TEST:

- /S: 100% TEST.
- CONNECTION RESISTANCE: 3 Ω MAX.
- HI-POT: 300V/10mS.
- INSULATION RESISTANCE: 10M Ω MIN.

3. ROHS COMPLIANCE

②	WIRE	UL1007 30AWG, Tinned copper, Black	A/R	M
①	TERMINAL	WTB 1.25MM PITCH TERMINAL	1	EA
No.	PART	DESCRIPTION	QTY	UNIT
www.fciconnect.com		surface - / tolerance std - / projection	mm	
		TOLERANCES UNLESS OTHERWISE SPECIFIED		
Dr	Harry Shi	2014-01-08	ANGULAR	0.X ±-
Eng	Harry Shi	2014-01-08	LINEAR	0.XX ±-
Chr	Harry Shi	2014-01-08	0° ±-	0.XXX ±-
Appr	Jackson Wang	2014-01-08	Product family	Spec ref
FCJ title		Wire with the terminal	10127218	Rev. A
catalog no		-	CUSTOMER	sheet 1 of 1

rev	ecn no	dr	date
A	-	Shi	2014-01-08

Copyright FCI