

Excellent Integrated System Limited

Stocking Distributor

Click to view price, real time Inventory, Delivery & Lifecycle Information:

[FCI](#)

[10125101-A15RLF](#)

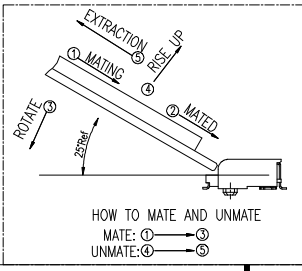
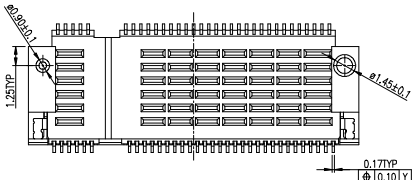
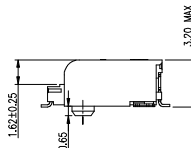
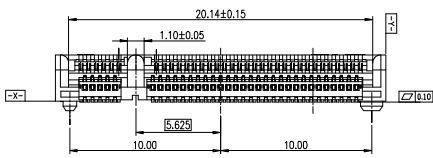
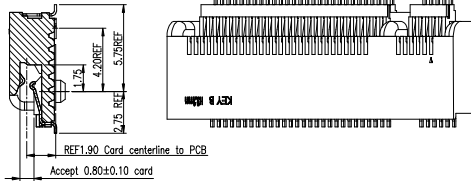
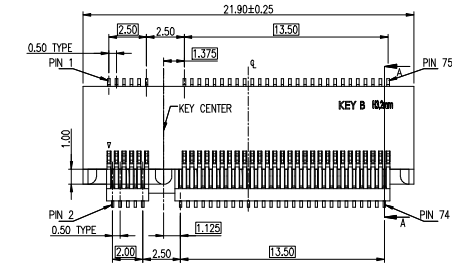
For any questions, you can email us directly:

sales@integrated-circuit.com

PART NUMBER
10125101-AXXRLF

NOTES:

1. MATERIAL:
 - 1) HOUSING: HIGH TEMPERATURE THERMOPLASTIC, COLOR BLACK.
 - 2) CONTACT: COPPER ALLOY.
 - 3) NAIL: COPPER ALLOY.
2. FINISH:
 - 2.1 CONTACTS:
 - 1) 50u" MIN. Ni UNDER PLATED ALL
 - 2) Au PLATING ON CONTACT AREA.
 - 3) MATTE Tin 80u" MIN. ON SOLDER AREA.
 - 2.2 NAILS:
 - 1) 50u" MIN. Ni UNDER PLATED OVER ALL.
 - 2) MATTE Tin 80u" MIN. ON SOLDER AREA.
3. GENERAL CHARACTERISTICS:
 - 3.1 RATING: 50V 0.5A
 - 3.2 INSULATION RESISTANCE: 100Mohm MIN. AT 500VDC
 - 3.3 DIELECTRIC WITHSTANDING VOLTAGE: 300VAC FOR ONE MINUTE.
 - 3.4 CONTACT RESISTANCE: 55 mohm MAX. (BEFORE).
 - 3.5 MATING/UNMATING FORCE: 2.3Kgf MAX.
4. DURABILITY 50 CYCLES.
5. PRODUCT SPECIFICATION SEE FCI GS-12-1142.
6. FOR REFLOW SOLDERING, LEAD-FREE PROCESS.
7. THE PRODUCT IS RoHS COMPLIANT AND HALOGEN FREE.
8. P/N: 10125101 - A XX R LF



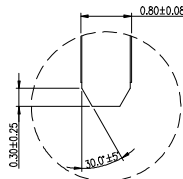
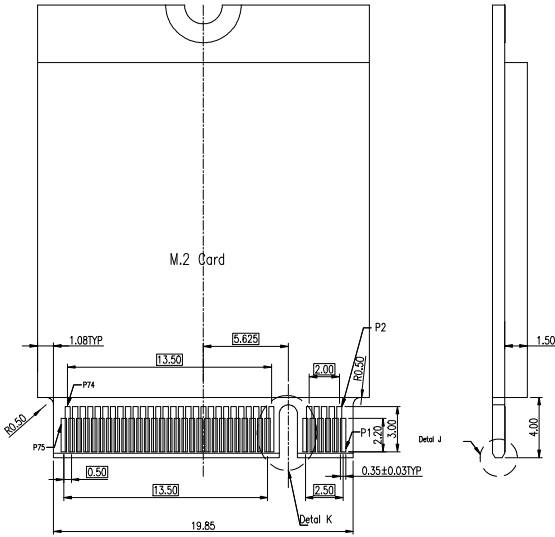
HEIGHT
 A=3.2

R=TAPE REEL PACKING
 CONTACT AREA PLATING
 01:GoldFlash (Au1u")
 15:Au15u"
 30:Au30u"

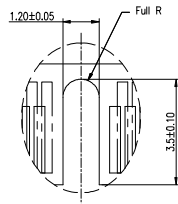
mat'l. code		surface	tolerance	projection	product family
A	BF	2013-05-02	tolerances unless otherwise specified	mm	title M.2 CONN P=0.5MM H3.2MM KEY B
B	BF	2014-01-03	angles	mm	
C	ELX-T-19318	TAI	2014-11-06	scale	
dr	BEER FU	2013-05-02			dwg no 10125101 sheet 1 of 3 size A4
enr	BEER FU	2013-05-02			
chr	BEER FU	2013-05-02			
appd	BEER FU	2013-05-02			
sheet index	revision sheet	C 1	C 2	C 3	type CUSTOMER Drawing

form: A4mmXLc

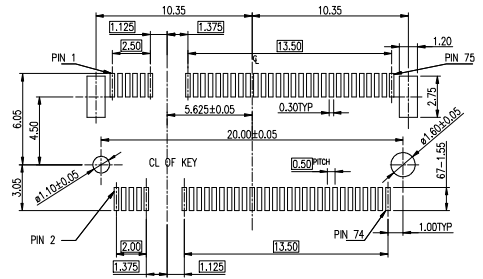
PART NUMBER
10125101-AXXRLF



DETAIL K
 SCALE:2:1



DETAIL J
 SCALE:2:1



CARD FIXED HOLE(NOT SHOWN) LAYOUT SHALL REFER TO M.2 CARD PROVIDER

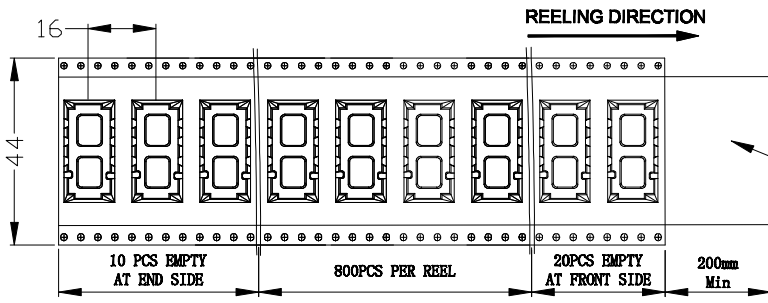
RECOMMENDED SINGLE CARD LAYOUT
 TOLERANCE ±0.05(TOP VIEW)

RECOMMENDED SINGLE CARD LAYOUT
 TOLERANCE ±0.05(TOP VIEW)

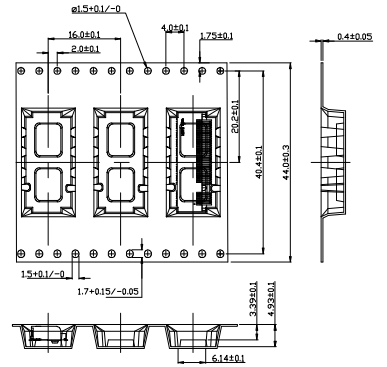
FCI	dwg no	sheet 2 of 3	size
	10125101		A4
	type	CUSTOMER Drawing	

sheet index	revision sheet	C 1	C 2	C 3											
-------------	----------------	-----	-----	-----	--	--	--	--	--	--	--	--	--	--	--

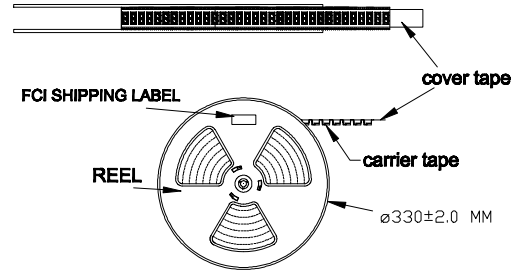
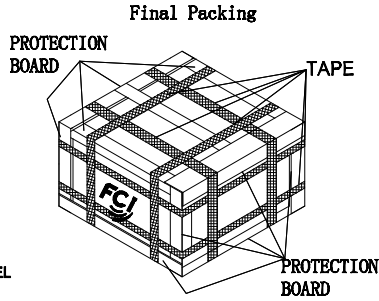
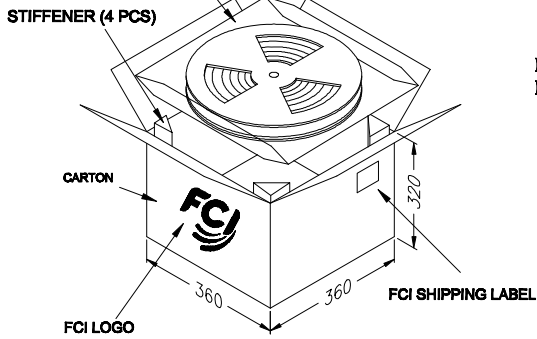
PACKING SPECIFICATION



cover tape



PLASTIC BAGS (2 PCS), 3 REELS/BAG, TOTAL 6 REELS/CARTON



PART NUMBER	10125101-A00R1F
PCB/REEL	800
REEL/CARTON	6
PCB/CARTON	4800
NET	2.5KG
GROSS	6.5KG

FCI	dwg no	sheet 3 of 3	size
	type	10125101	A4
		CUSTOMER Drawing	

sheet index	revision sheet	C 1	C 2	C 3															
-------------	----------------	-----	-----	-----	--	--	--	--	--	--	--	--	--	--	--	--	--	--	--