

Excellent Integrated System Limited

Stocking Distributor

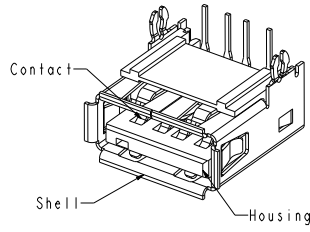
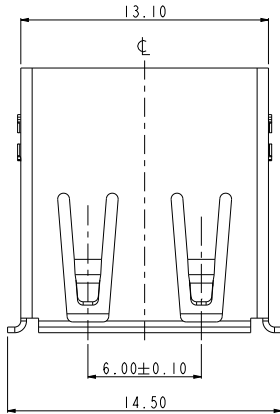
Click to view price, real time Inventory, Delivery & Lifecycle Information:

[FCI](#)

[10129475-0100APLF](#)

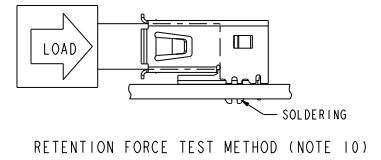
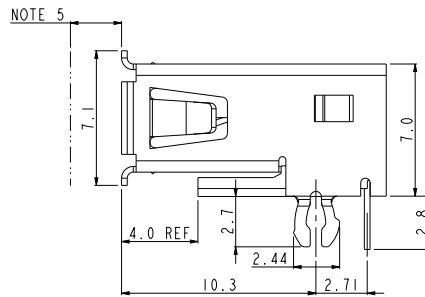
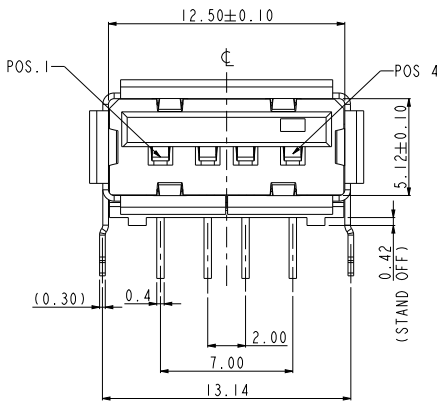
For any questions, you can email us directly:

sales@integrated-circuit.com



NOTES:

1. MATERIAL:
CONTACTS: COPPER ALLOY
SHELL: COPPER ALLOY
HOUSING: UL 94V-0 RATED, HIGH TEMPERATURE THERMOPLASTIC;
2. PLATING:
CONTACTS: SEE PRODUCT NUMBER CODE
SHELL: SEE PRODUCT NUMBER CODE
3. DATUM AND BASIC DIMENSIONS ESTABLISHED BY CUSTOMER;
4. RECOMMENDED PC BOARD THICKNESS OF 1.57mm
5. 2.67mm MAXIMUM PANEL THICKNESS IF MOUNTED BEHIND PANEL;
6. PRODUCT SPEC GS-12-095
7. PACKING STANDARD GS-14-920, WILL BE APPLIED FOR LEAD FREE P/N'S;
8. THE PRODUCT MEET EUROPEAN UNION DIRECTIVES AND OTHER COUNTRY REGULATION AS DESCRIBED IN GS-22-008;
9. THE HOUSING WILL WITHSTAND EXPOSURE TO 260-C PEAK TEMPERATURE FOR 20 SECONDS IN A CONVECTION, INFRO-RED OR VAPOR PHASE REFLOW OVEN;
10. HOUSING PULL OFF THE SHELL RETENTION FORCE: 250N MIN;
11. THE PRODUCT CAN BE USED PIP PROCESS.



spec ref	dr	LiQing Lei	20140420	projection	MM	size	A3	scale	5.000
tolerance std	eng	LiQing Lei	20140424	chr		ecn no		rel level	Released
TOLERANCES UNLESS OTHERWISE SPECIFIED				appr	Rick Blain	20140424	product family		
surface	linear	0.X	±0.3	FCI	TITLE	USB RECEPTACLE	eng no	10129475	rev
		0.XX	±0.2						
		0.XXX	±0.1						
	angular	0°	±3°	www.fci.com	cat. no.		Product - Customer Draw	sheet 1 of 2	

A

B

C

D

A

B

C

D

PRODUCT NUMBER DESCRIPTION

10129475- X X X X X X LF

BASE PRODUCT NUMBER _____

HOUSING COLOR _____
0 - BLACK

SHELL TYPE AND SHELL PLATING OPTIONS _____
1 - NO BACK SHIELD, NICKEL PLATING ONLY

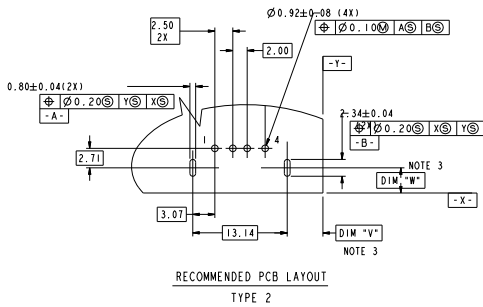
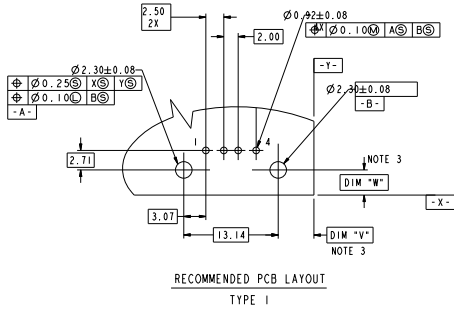
EXTENSION _____
0 - NONE

TERMINAL PLATING OPTION _____
0 - 1.25um Ni UNDERPLATE
0.76um GXT CONTACT AREA
2.50um MATTE TIN TAIL AREA FOR P/N'S

PACKAGING OPTIONS _____
A - TAPE AND REEL
B - TUBES
T - TRAY

DATE CODE _____
P - PRINT DATECODE
N - WHITHOUT DATECODE

LEAD FREE _____



Copyright FCI.

spec ref	dr	LiQing Lei	20140420	projection	MM	size	A3	scale	5.000
tolerance std	eng	LiQing Lei	20140424	chr		ecn no		rel level	Released
	appr	Rick Blum	20140424	product family		rev			A
surface	linear	0.X	±0.3	TITLE USB RECEPTACLE R/A, T/H, A TYPE cat. no.		eng no 10129475		Product - Customer Draw sheet 2 of 2	
		0.XX	±0.2						
	angular	0°	±3°						