

Excellent Integrated System Limited

Stocking Distributor

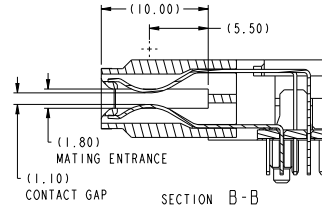
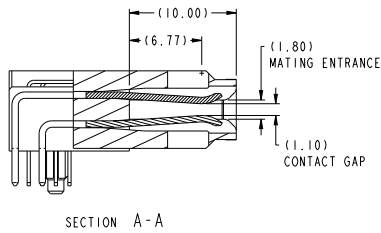
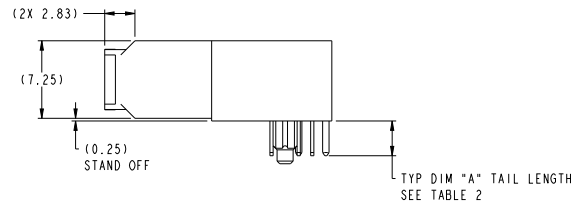
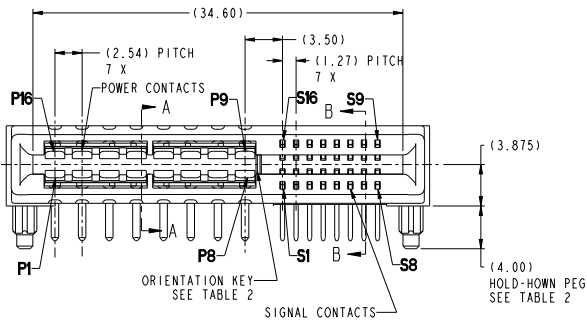
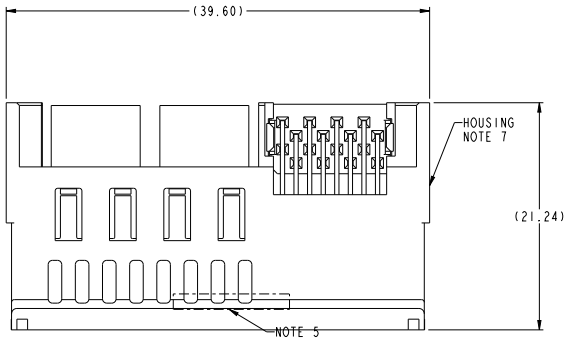
Click to view price, real time Inventory, Delivery & Lifecycle Information:

[FCI](#)

[10119843-003LF](#)

For any questions, you can email us directly:

sales@integrated-circuit.com



rev	ecc no	dr	date	spec ref	tolerance std	dr	chkd	apprv	projection	MM	size	scale
A	---	HZ	2011-12-22			www.fcil.com	www.fcil.com	www.fcil.com	RIGHT ANGLE 16P16S		A2	A:1
TOLERANCES UNLESS OTHERWISE SPECIFIED linear 0.X ±0.30 0.XX ±0.10 0.XXX ±0.05 angular 0° ±2°												
product family: HIGH POWER CARD EDGE										10119843		rev A
PDS: Rev: A										STATUS: Released		Printed: 16/11/2012

2

3

4

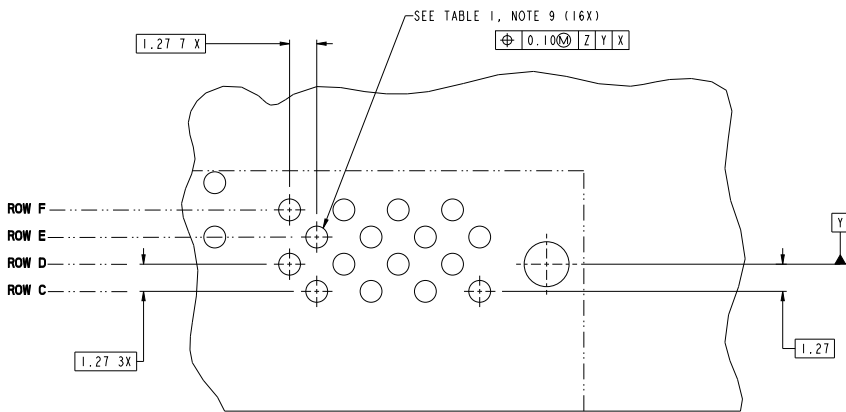
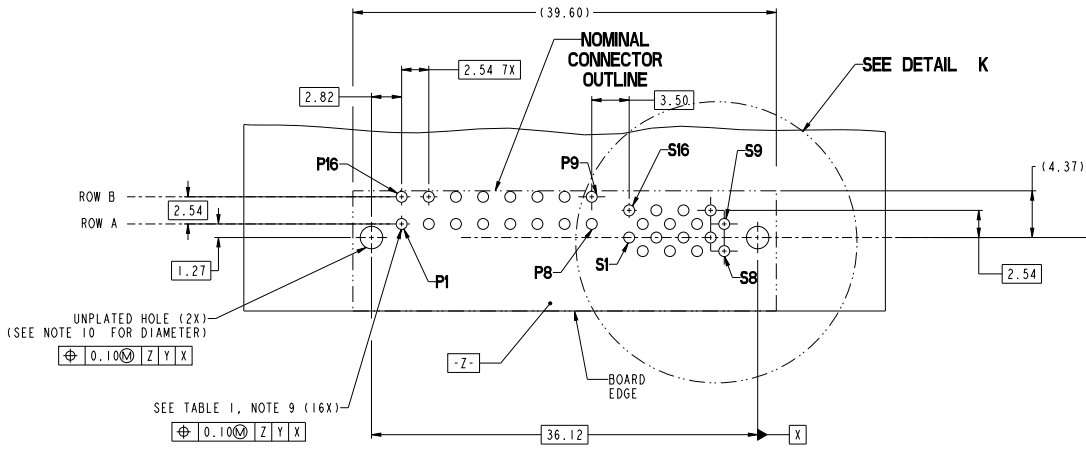
5

PDS: Rev: A

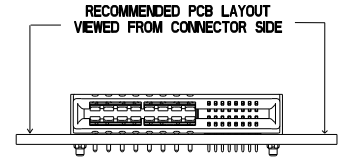
STATUS: Released

Printed: 16/11/2012

Copyright FCI

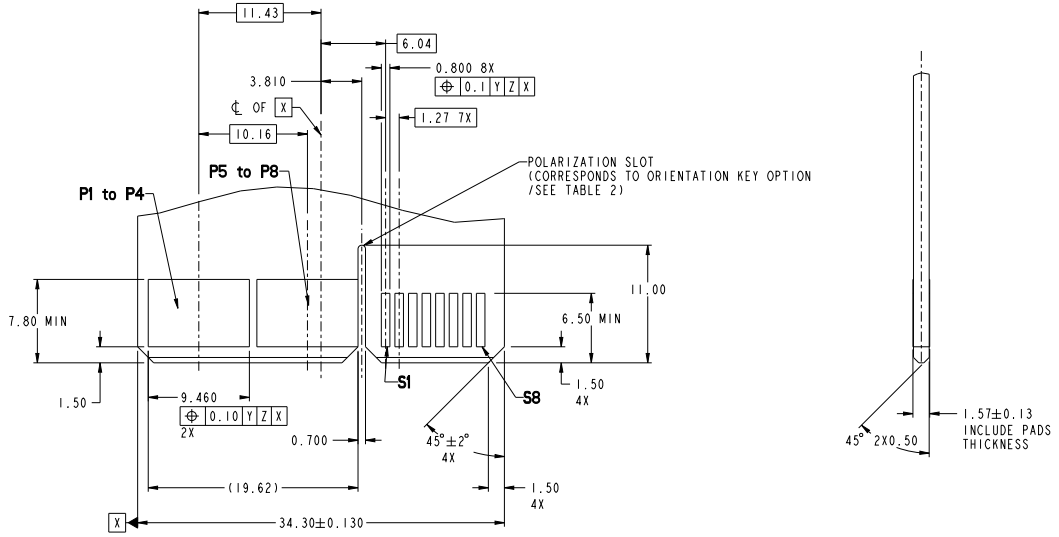


DETAIL K
SCALE 8:1



dr: WeiLiang Zhang	designed by: JIANHONG	projection:	MM	size: A2	scale: 1:1
dwg: WeiLiang Zhang	checked by: JIANHONG			acc no:	
chr: WeiLiang Zhang	approved by: JIANHONG	product family:		rel level:	Released
oppr: WeiLiang Zhang	approved by: JIANHONG				
FCI www.fci.com	RIGHT ANGLE 16P16S RIGHT POWER CARD EDGE	cat. no.:	10119843	rev: A	

CONTACT TYPE	TOP LAYER DESCRIPTION	TABLE 1 (HPCE / SOLDER TAILS) PLATED THROUGH-HOLE REQUIREMENTS				
		DRILLED HOLE DIAMETER	COPPER THICKNESS	TIN-LEAD THICKNESS	TIN THICKNESS	FINISHED HOLE DIAMETER
POWER & SIGNAL	TIN-LEAD	1.10-1.16 (1.15 DRILL)	0.025 - 0.050	0.005 - 0.015	--	0.94 - 1.10
	IMMERSION TIN	1.10-1.16 (1.15 DRILL)	0.025 - 0.050	--	0.9 - 1.5um	0.94 - 1.10
	COPPER (SEE NOTE 8)	1.10-1.16 (1.15 DRILL)	0.025 - 0.050	--	--	0.94 - 1.10



RECOMMENDED MATING BOARD FOOTPRINT

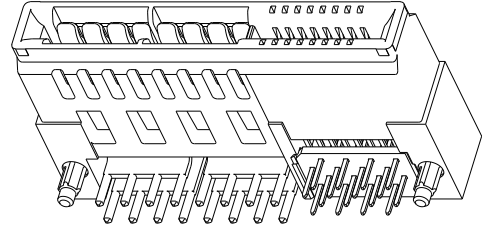
dr: WeiLiang Zhang	desig: 10119843	projection:	MM	size: A2	scale: 1:1
eng: WeiLiang Zhang	desig: 10119843	product family: HIGH POWER CARD EDGE	rel level: Released	acc no: 10119843	rev: A
appr: WeiLiang Zhang	desig: 10119843	Product - Customer Draw			
www.fci.com		cat. no.	sheet 3 of 4		

PDS: Rev: A

STATUS: Released

Printed: Jul 16, 2012

HPCE PART NUMBER (TABLE 2)					
10117877	TAIL TYPE	HOLD-DOWN OPTION	ORIENTATION KEY	DIM "A" TYPICAL TAIL LENGTH	
10119843-001LF	SOLDER TAIL	NO	YES	3.25±0.25	
10119843-002LF			NO		
10119843-003LF			YES		
10119843-004LF			NO		
10119843-005LF			YES		
10119843-006LF			NO		
10119843-007LF		YES	NO	YES	4.05±0.25
10119843-008LF				NO	
10119843-009LF				YES	
10119843-010LF				NO	
10119843-011LF				YES	
10119843-012LF				NO	



NOTES:

1. CONNECTOR MATERIALS:

HOUSING: HIGH TEMPERATURE THERMAL PLASTIC, BLACK
UL 94V-0 COMPLIANT
CONTACTS: HIGH PERFORMANCE COPPER ALLOY.

2. CONTACT FINISH REF. GS-12-604 SECTION 5.2.

3. PRODUCT SPECIFICATION: GS-12-604.

4. APPLICATION SPECIFICATION: GS-20-128).

5. PRODUCT MARKING (FCI - PART NUMBER & DATE CODE) ON HOUSING IN AREA SHOWN.

6. PACKAGING MEETS FCI SPECIFICATION GS-14-937.

7. HOUSING COMPONENT WILL WITHSTAND EXPOSURE TO 260°C PEAK TEMPERATURE FOR 60 SECONDS IN A CONVECTION, INFRA-RED, OR VAPOR PHASE REFLOW OVEN.

8. COPPER PLATING THICKNESS IN CENTER OF VIA-HOLE CAN BE NO MORE THAN 0.003 LESS THAN OTHER AREAS.

9. ALL HOLE SIZES ARE FINISHED HOLE SIZES.

10. MOUNTING HOLES ARE UNPLATED
Ø 2.25 +/- 0.05 FOR SOLDER TAILS

dr: WeiLong Zhang	designed: jason@fcic.com	projection	MM	size	A2	scale	A:1
eng: WeiLong Zhang	checked: jason@fcic.com	①	←	acc no			
chr: WeiLong Zhang	approved: jason@fcic.com	product family		rel level	Released		
appr: WeiLong Zhang	approved: jason@fcic.com	FCI	RIGHT ANGLE 16P16S	10119843			
www.fcicom	cat. no.		HIGHT POWER CARD EDGE				

PDS: Rev: A

STATUS: Released

Printed: Jul 16, 2012

Copyright FCI