

## Excellent Integrated System Limited

Stocking Distributor

Click to view price, real time Inventory, Delivery & Lifecycle Information:

[FCI](#)  
[20020326-G041B01LF](#)

For any questions, you can email us directly:  
[sales@integrated-circuit.com](mailto:sales@integrated-circuit.com)



1 | 2

FCIconnect.com

3 |

4

PRODUCT NUMBER  
 20020326-XXXXXXLF

20020326 — [ ] [ ] [ ] [ ] [ ] [ ] [ ] [ ] L F

PITCH

G: 5.00 mm  
 H: 5.08 mm

POLES

04: 2x2 POLES  
 06: 2x3 POLES  
 (OTHER POSITIONS  
 ON REQUEST ONLY)

LF : DENOTED RoHS COMPATIBLE

1 : STANDARD PRODUCT  
 W/ BOX PACKING

SCREW CODE

| CODE | SCREW TYPE | AVAILABILITY    |
|------|------------|-----------------|
| A    | -/+        | ON REQUEST ONLY |
| B    | -          | STANDARD        |

| PROPERTY TABLE                            |          |                    |                    |
|---|----------|--------------------|--------------------|
| FCI SERIES NAME                           |          | 24-500             | 24-508             |
| PITCH (mm)                                |          | 5.00               | 5.08               |
| VOLTAGE RATING (VAC)                      |          | 300                | 300                |
| CURRENT RATING (A)                        |          | 20                 | 20                 |
| APPLICABLE WIRE RANGE (AWG)               | 1-WIRE   | 12~22              | 12~22              |
|   | 2-WIRE   | 18                 | 18                 |
| WIRE CROSS SECTION (mm <sup>2</sup> )     | SOLID    | 1-WIRE             | 2.5                |
|   |          | 2-WIRE             | 1.0                |
|   | STRANDED | 1-WIRE             | 1.5                |
|   |          | 2-WIRE             | 0.75               |
| OPENING CONTACT HOUSING(mm <sup>2</sup> ) |          | 2.5x2.5            | 2.5x2.5            |
| WIRE STRIP LENGTH(mm)                     |          | 6~7                | 6~7                |
| TORQUE +/-10% (N-m/Lb-in)                 |          | 0.4/3.5            | 0.4/3.5            |
| SCREW                                     |          | M2.5x0.4           | M2.5x0.4           |
| WITHSTANDING VOLTAGE (kV)                 |          | 1.6                | 1.6                |
| OPERATING TEMP. (°C)                      |          | -40~+115           | -40~+115           |
| SOLDERING TEMP. (°C)                      |          | 250±10<br>(5 sec.) | 250±10<br>(5 sec.) |
| POLES AVAILABLE                           |          | 04~06              | 04~06              |
| SAFETY CERTIFICATE                        |          |                    |                    |

HOUSING CODE

| CODE | COLOR             | AVAILABILITY    |
|------|-------------------|-----------------|
| 1    | GREEN(RAL 6018/T) | STANDARD        |
| 2    | BLACK             | ON REQUEST ONLY |
| 3    | GREY(RAL 7004/P)  | ON REQUEST ONLY |
| 4    | BLUE(RAL 5015/A)  | ON REQUEST ONLY |

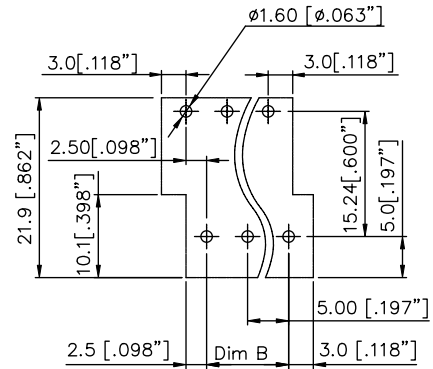
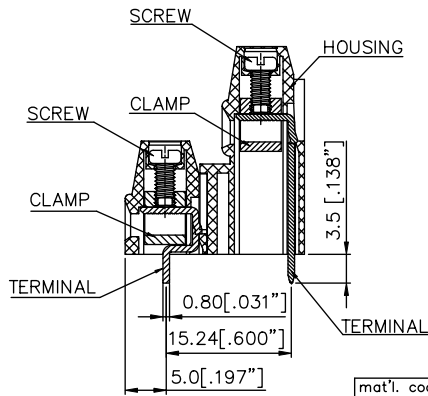
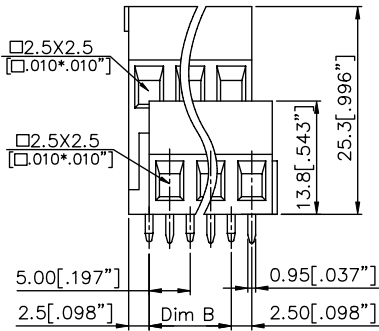
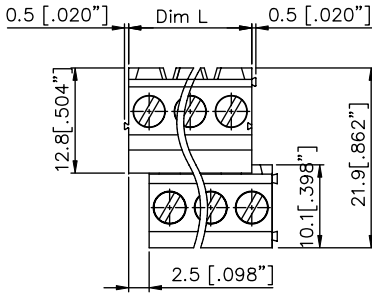
NOTES:

- MATERIALS
  - 1-1 HOUSING: THERMALPLASTIC RESIN, UL 94V-0 RATED.
  - 1-2 SCREW: STEEL, ZINC PLATED.
  - 1-3 CLAMP: COPPER ALLOY, NICKEL PLATED.
  - 1-4 TERMINAL: COPPER ALLOY, TIN PLATED.
- PRODUCT SPECIFICATION REFER TO FCI GS-12-625.
- PRODUCT PACKING SPECIFICATION REFER TO FCI GS-14-1394.
- FCI, SAFETY CERTIFICATE LOGO AND SERIES NAME TO BE SHOWN ON PRODUCT SURFACE.
- THE PRODUCTS WHERE THE PART NUMBER END IN "LF" MEET THE EUROPEAN UNION DIRECTIVE AND OTHER COUNTRY REGULATIONS AS DESCRIBED IN GS-22-008.
- RECOMENDED SOLDERING PROCESS BY WAVE SOLDER.

|             |                    |                      |            |                                       |  |
|-------------|--------------------|----------------------|------------|---------------------------------------|--|
| mat'l. code | surface ASME Y14.5 | tolerance ASME Y14.5 | projection | product family                        | TERMINAL BLOCK                           |
| ltr         | ecn no             | dr                   | date       | tolerances unless otherwise specified | title                                    |
| A           | T10-0138           | WL                   | 083110     | X.±0.5                                | TERMINAL BLOCK                           |
| B           | T10-0141           | WL                   | 090710     | X.X±0.3                               | FIXED SIGNAL PLUG, OFFSET RIGHT, 2-LEVEL |
| C           | T10-0165           | WL                   | 101210     | X.XX±0.1                              | scale                                    |
|             |                    |                      |            | dr                                    | WENDY CHEN 081710                        |
|             |                    |                      |            | enrg                                  | JASON HSU 081710                         |
|             |                    |                      |            | chr                                   | GARY HSIEH 081710                        |
|             |                    |                      |            | appd                                  | JOSEPH HSIA 081710                       |
| sheet index | revision sheet     | C                    | C          | C                                     |  |
|             |                    | 1                    | 2          | 3                                     |  |

|                    |             |         |
|--------------------|-------------|---------|
| PRODUCT NUMBER     | SERIES NAME | PITCH   |
| 20020326-GXXXXXXLF | 24-500      | 5.00 mm |

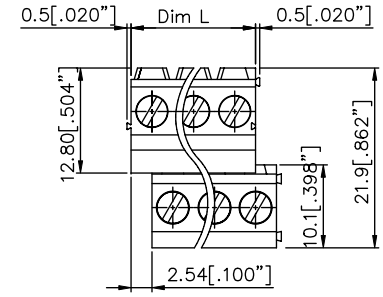
|       |               |              |
|-------|---------------|--------------|
| POLE  | 04            | 06           |
| Dim L | 10.0 [.394"]  | 15.0 [.590"] |
| Dim B | 5.0 [.196"]   | 10.0 [.394"] |
| Tol.  | ±0.15 [.006"] |              |



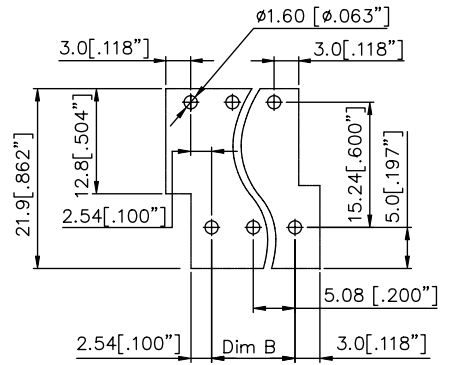
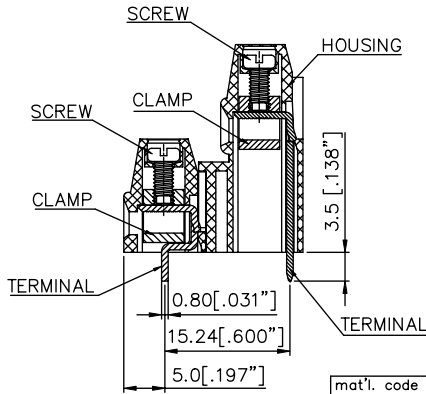
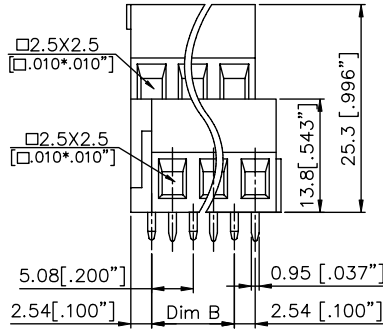
P.C.B LAYOUT

|                                       |                       |                         |  |                  |
|---------------------------------------|-----------------------|-------------------------|--|------------------|
| mat'l. code                           | surface<br>ASME Y14.5 | tolerance<br>ASME Y14.5 | projection                               | product family   |
| ltr                                   | ecn                   | no                      | dr                                       | date             |
| tolerances unless otherwise specified |                       |                         |  | title            |
| angles                                | X.±0.5                | MM                      | TERMINAL BLOCK                           |                  |
| X'±1"                                 | X.XX±0.3              | [INCH]                  | FIXED SIGNAL PLUG, OFFSET RIGHT, 2-LEVEL |                  |
| dr                                    | WENDY CHEN            | 081710                  | scale                                    | dwg no           |
| enfr                                  | JASON HSU             | 081710                  | FCI                                      | sheet 2 of 3     |
| chr                                   | GARY HSIEH            | 081710                  | 20020326                                 | size             |
| appd                                  | JOSEPH HSIA           | 081710                  | type                                     | A4               |
| sheet                                 | revision              |                         |  | CUSTOMER Drawing |
| index                                 | sheet                 |                         |  |                  |

|                    |             |         |
|--------------------|-------------|---------|
| PRODUCT NUMBER     | SERIES NAME | PITCH   |
| 20020326-HXXXXXXLF | 24-508      | 5.08 mm |



|       |               |               |
|-------|---------------|---------------|
| POLE  | 04            | 06            |
| Dim L | 10.16 [.400"] | 15.24 [.600"] |
| Dim B | 5.08 [.200"]  | 10.16 [.400"] |
| Tol.  | ±0.15 [.006"] |               |



P.C.B LAYOUT

|                                       |                       |                         |  |                                  |
|---------------------------------------|-----------------------|-------------------------|--|----------------------------------|
| mat'l. code                           | surface<br>ASME Y14.5 | tolerance<br>ASME Y14.5 | projection<br>MM<br>[INCH]               | product family<br>TERMINAL BLOCK |
| ltr                                   | ecn                   | no                      | dr                                       | date                             |
| tolerances unless otherwise specified |                       |                         |  |                                  |
| angles                                | X.±0.5                |                         | MM                                       |                                  |
|                                       | X.X±0.3               |                         | [INCH]                                   |                                  |
|                                       | X.XX±0.1              |                         | scale                                    |                                  |
| dr                                    | WENDY CHEN            | 081710                  | title                                    |                                  |
| enrg                                  | JASON HSU             | 081710                  | TERMINAL BLOCK                           |                                  |
| chr                                   | GARY HSIEH            | 081710                  | FIXED SIGNAL PLUG, OFFSET RIGHT, 2-LEVEL |                                  |
| appd                                  | JOSEPH HSIA           | 081710                  | dwg no                                   | sheet 3 of 3 size                |
|                                       |                       |                         | 20020326                                 | A4                               |
| sheet                                 | revision              |                         | type                                     | CUSTOMER Drawing                 |
| index                                 | sheet                 |                         |  |                                  |