

Excellent Integrated System Limited

Stocking Distributor

Click to view price, real time Inventory, Delivery & Lifecycle Information:

[FCI](#)
[20020731-Y031A01LF](#)

For any questions, you can email us directly:
sales@integrated-circuit.com



1 | 2

FCIconnect.com

3

4

PRODUCT NUMBER
20020731-XXXXXXLF

20020731- [] [] [] [] [] [] [] L F

PITCH
Y: 15.0 mm

POLES
02: 2 POLES
03: 3 POLES
04: 4 POLES

10: 10 POLES

LF : DENOTED RoHS COMPATIBLE

1 : STANDARD PRODUCT
W/ BOX PACKING

SCREW CODE

CODE	SCREW TYPE	AVAILABILITY
A	-/+	ON REQUEST ONLY
B	-	STANDARD

PROPERTY TABLE	
FCI SERIES NAME	40-1500
PITCH (mm)	15.0
VOLTAGE RATING (VAC)	600
CURRENT RATING (A)	125
APPLICABLE WIRE RANGE (AWG)	1-WIRE 2~20 2-WIRE 10
WIRE CROSS SECTION (mm ²)	SOLID
	STRANDED
	1-WIRE 35 2-WIRE 6.0
	1-WIRE 25 2-WIRE 6.0
OPENING CONTACT HOUSING(mm ²)	8.1x8.4
WIRE STRIP LENGTH(mm)	15~18
TORQUE +/-10% (N-M/Lb-in)	4.12/36.5
SCREW	M5.0x0.8
WITHSTANDING VOLTAGE (kV)	2.2
OPERATING TEMP. (°C)	-40~+115
SOLDERING TEMP. (°C)	250±10 (5 sec.)
POLES AVAILABLE	02~10
SAFETY CERTIFICATE	

HOUSING CODE

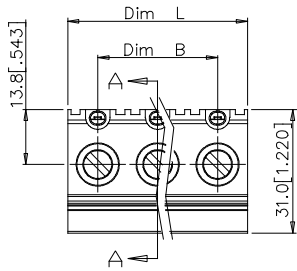
CODE	COLOR	AVAILABILITY
1	GREEN(RAL 6018/T)	STANDARD
2	BLACK	ON REQUEST ONLY
3	GREY(RAL 7004/P)	ON REQUEST ONLY
4	BLUE(RAL 5015/A)	ON REQUEST ONLY

NOTES:

- MATERIAL:
1-1 HOUSIN: THERMOPLASTIC RESIN, UL94V-0 RATED.
1-2 SCREW: STEEL, ZINC PLATED.
1-3 CLAMP: COPPER ALLOY, NICKEL PLATED.
1-1 TERMINAL: COPPER ALLOY TIN PLATED.
- PRODUCT SPECIFICATION REFER TO FCI GS-12-625.
- PRODUCT PACKING SPECIFICATION REFER TO FCI GS-14-1394.
- FCI, SAFETY CERTIFICATE LOGO AND SERIES NAME TO BE SHOWN ON PRODUCT SURFACE.
- THE PRODUCTS WHERE THE PART NUMBER END IN "LF" MEET THE EUROPEAN UNION DIRECTIVE AND OTHER COUNTRY REGULATIONS AS DESCRIBED IN GS-22-008.
- RECOMENDED SOLDERING PROCESS BY WAVE SOLDER.

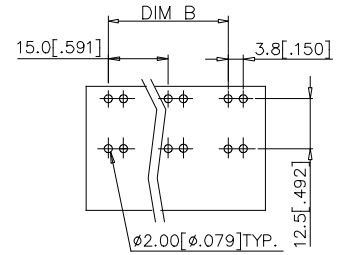
mat'l. code	surface ASME Y14.5	tolerance ASME Y14.5	projection	product family	TERMINAL BLOCK
ltr	ecm no	dr	date	title	
A	T10-0138	WL	083110	TERMINAL BLOCK	
B	T10-0172	WL	102010	FIXED POWER PLUG, MIDDLE CONTACT	
C	T-005202	WL	081911	scale	
D	T-010814	LS	031912	dwg no	
		dr	WENDY CHEN	082310	sheet 1 of 2
		enrg	JASON HSU	082310	size
		chr	GARY HSIEH	082310	A4
		appd	JOSEPH HSIA	082310	type
sheet index	revision sheet	D	D	CUSTOMER Drawing	
		1	2		

PRODUCT NUMBER	SERIES NAME	PITCH
20020731-YXXXXXXLF	40-1500	15.0 mm

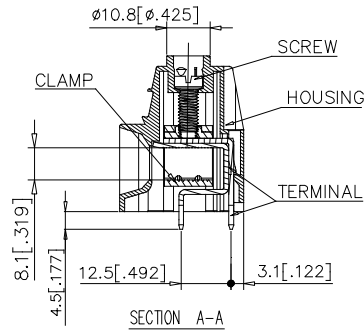
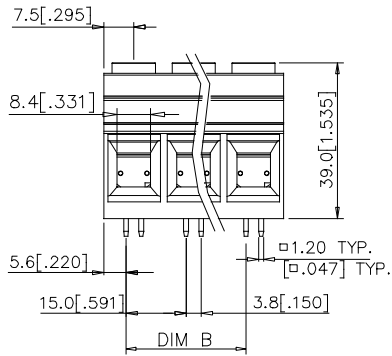
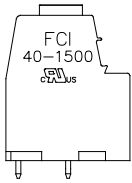


N = Number of poles
 Dim L = N x 15.0 [.591]
 Dim B = (N - 1) x 15.0 [.591]

Poles	Tolerance
2-3p	±0.30 [.012]
4-5p	±0.50 [.020]
6-10p	±0.80 [.031]



Recommended P.C.B. Layout



mat'l. code	surface ASME Y14.5 ✓	tolerance ASME Y14.5	projection MM [INCH]	product family TERMINAL BLOCK
ltr	ecn	no	dr	date
tolerances unless otherwise specified				
angles		line		scale
X ± 1°		X.X ± 0.5		X.XX ± 0.1
dr		WENDY CHEN		082310
enr		JASON HSU		082310
chr		GARY HSIEH		082310
appd		JOSEPH HSIA		082310
sheet index	revision sheet			



title	TERMINAL BLOCK FIXED POWER PLUG, MIDDLE CONTACT
dwg no	20020731
sheet 2 of 2	size A4
type	CUSTOMER Drawing